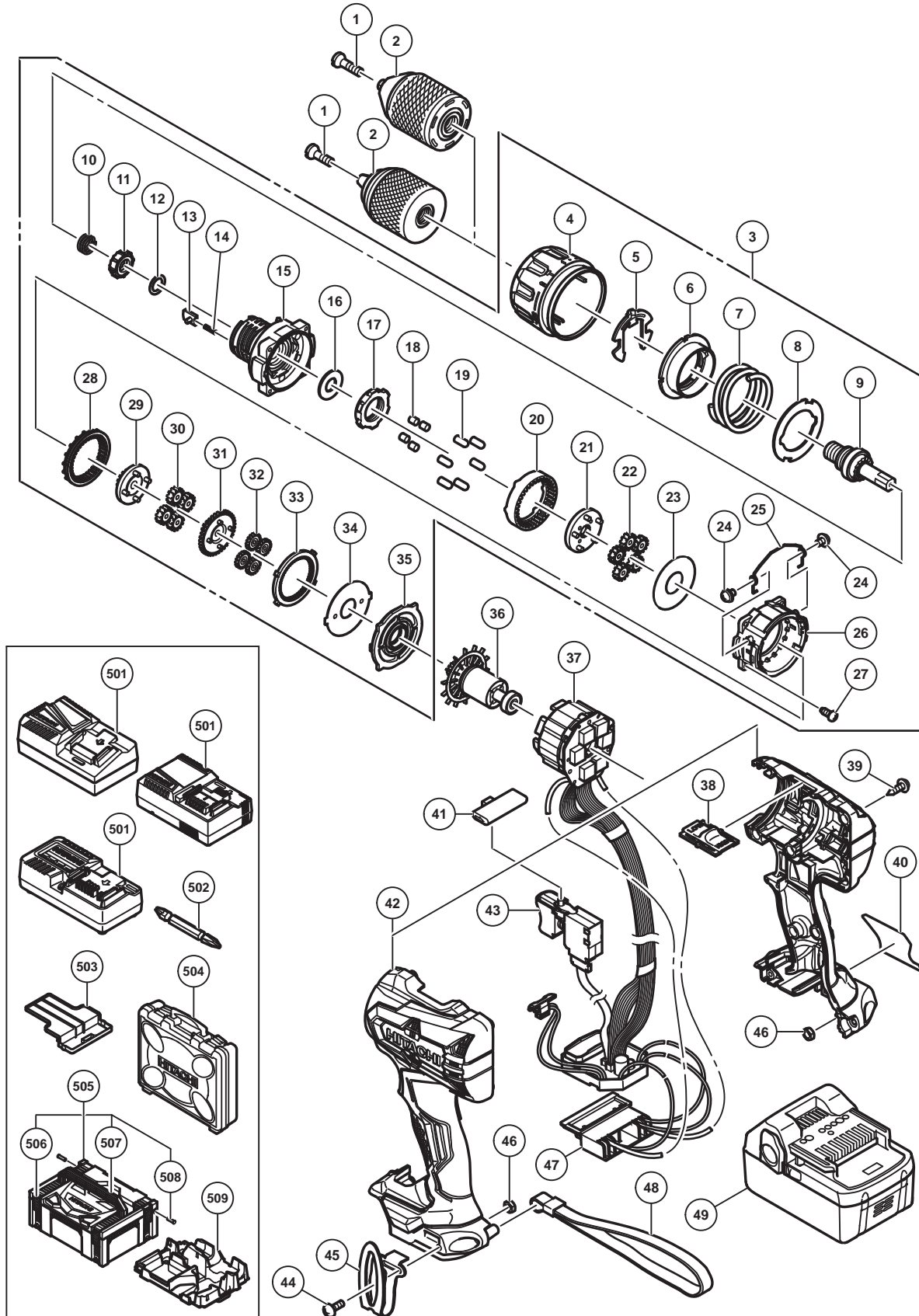


## ELECTRIC TOOL PARTS LIST

■ CORDLESS IMPACT DRIVER DRILL 2016-12-12  
Model DV 18DBSL (E1)



**PARTS**

DV 18DBSL

ITEM NO.	CODE NO.	DESCRIPTION	NO. USED	REMARKS	
*	1	370908	SEAL LOCK FLAT HD.SCREW (LEFT HAND) M6 X 20.5	1	
*	1	370909	SEAL LOCK FLAT HD.SCREW (LEFT HAND) M6 X 25	1	FOR EUROPE,RUS
*	2	335961	DRILL CHUCK 13VLRU-N (W/O CHUCK WRENCH)	1	
*	2	370897	DRILL CHUCK 13VLRB-Z (W/O CHUCK WRENCH)	1	FOR EUROPE,RUS
	3	370593	GEAR BOX ASS'Y	1	INCLUD.4-35
	4	370611	CLUTCH DIAL (B)	1	
	5	327146	CLICK SPRING	1	
	6	370602	NUT	1	
	7	370607	SPRING	1	
	8	370603	THRUST PLATE	1	
	9	370597	SPINDLE	1	
	10	327136	SPRING (C)	1	
	11	339772	RATCHET (B)	1	
	12	327147	WASHER (A)	1	
	13	339773	SLIP BLOCK	2	
	14	327133	STOPPER SPRING	2	
	15	370595	FRONT CASE	1	
	16	328717	WASHER (B)	1	
	17	370609	LOCK RING	1	
	18	319744	ROLLER	4	
	19	333539	PIN SET (6 PCS.)	6	
	20	370606	RING GEAR	1	
	21	370600	CARRIER	1	
	22	370616	PLANET GEAR (C) SET (5 PCS.)	5	
	23	331892	WASHER (A)	1	
	24	331895	SCREW SET D2 (2 PCS.)	2	
	25	370608	SHIFT ARM	1	
	26	370601	REAR CASE	1	
	27	324357	SCREW SET D3 X 12 (4 PCS.)	4	
	28	370605	SLIDE RING GEAR	1	
	29	370599	PINION (C)	1	
	30	370615	PLANET GEAR (B) SET (4 PCS.)	4	
	31	370598	PINION (B)	1	
	32	370614	PLANET GEAR (A) SET (4 PCS.)	4	
	33	370604	FIRST RING GEAR	1	
	34	339761	WASHER (B)	1	
	35	339762	MOTOR SPACER	1	
	36	361048	ROTOR PINION SET	1	
	37	370619	WIRING ASS'Y	1	INCLUD.43,47
	38	330583	SHIFT KNOB	1	
	39	313687	TAPPING SCREW (W/FLANGE) D3 X 16 (BLACK)	9	
	40		NAME PLATE	1	
	41	339768	PUSHING BUTTON	1	
	42	370618	HOUSING (A).(B) SET	1	
	43	370151	DC-SPEED CONTROL SWITCH	1	
	44	327001	TRUSS HD. SCREW M4 (BLACK)	1	
	45	332824	HOOK	1	
	46	327002	LOCK NUT M4 (BLACK)	2	
	47	339769	BATTERY TERMINAL	1	
	48	306952	STRAP (BLACK)	1	

**PARTS**

DV 18DBSL

ITEM NO.	CODE NO.	DESCRIPTION	NO. USED	REMARKS
* 49	335790	BATTERY BSL 1850 (EUROPE,AUS,NZL)	2	INCLUD.503
* 49	370739	BATTERY BSL 1850 (KOR)	2	INCLUD.503
* 49	339783	BATTERY BSL 1830C (EUROPE,AUS,NZL)	2	INCLUD.503
* 49	330068	BATTERY BSL 1830 (EUROPE,AUS,NZL)	2	INCLUD.503
* 49	334729	BATTERY BSL 1830 (TPE)	2	INCLUD.503
* 49	336690	BATTERY BSL 1830 (THA)	2	INCLUD.503

**STANDARD ACCESSORIES**

ITEM NO.	CODE NO.	DESCRIPTION	NO. USED	REMARKS
* 501		CHARGER (MODEL UC 18YFSL)	1	
* 501		CHARGER (MODEL UC 18YSL3)	1	
* 501		CHARGER (MODEL UC 18YKSL)	1	
502	983006	+ DRIVER BIT NO.2 65L	1	
* 503	329897	BATTERY COVER	1	
* 504	337852	CASE	1	
* 505	336471	CASE ASS'Y (STACKABLE 2)	1	INCLUD.506-508
* 506	336472	LATCH	4	
* 507	336473	HANDLE	1	
* 508	336474	HINGE	2	
* 509	336475	INNER TRAY	1	

**OPTIONAL ACCESSORIES**

ITEM NO.	CODE NO.	DESCRIPTION	NO. USED	REMARKS
601	955657	- DRIVER BIT (A) 3MM X 70L	1	
602	955659	- DRIVER BIT (A) 4MM X 70L	1	
603	955674	- DRIVER BIT (A) 6MM X 70L	1	
604	983004	+ DRIVER BIT NO.1 65L	1	
605	983011	+ DRIVER BIT NO.3 65L	1	