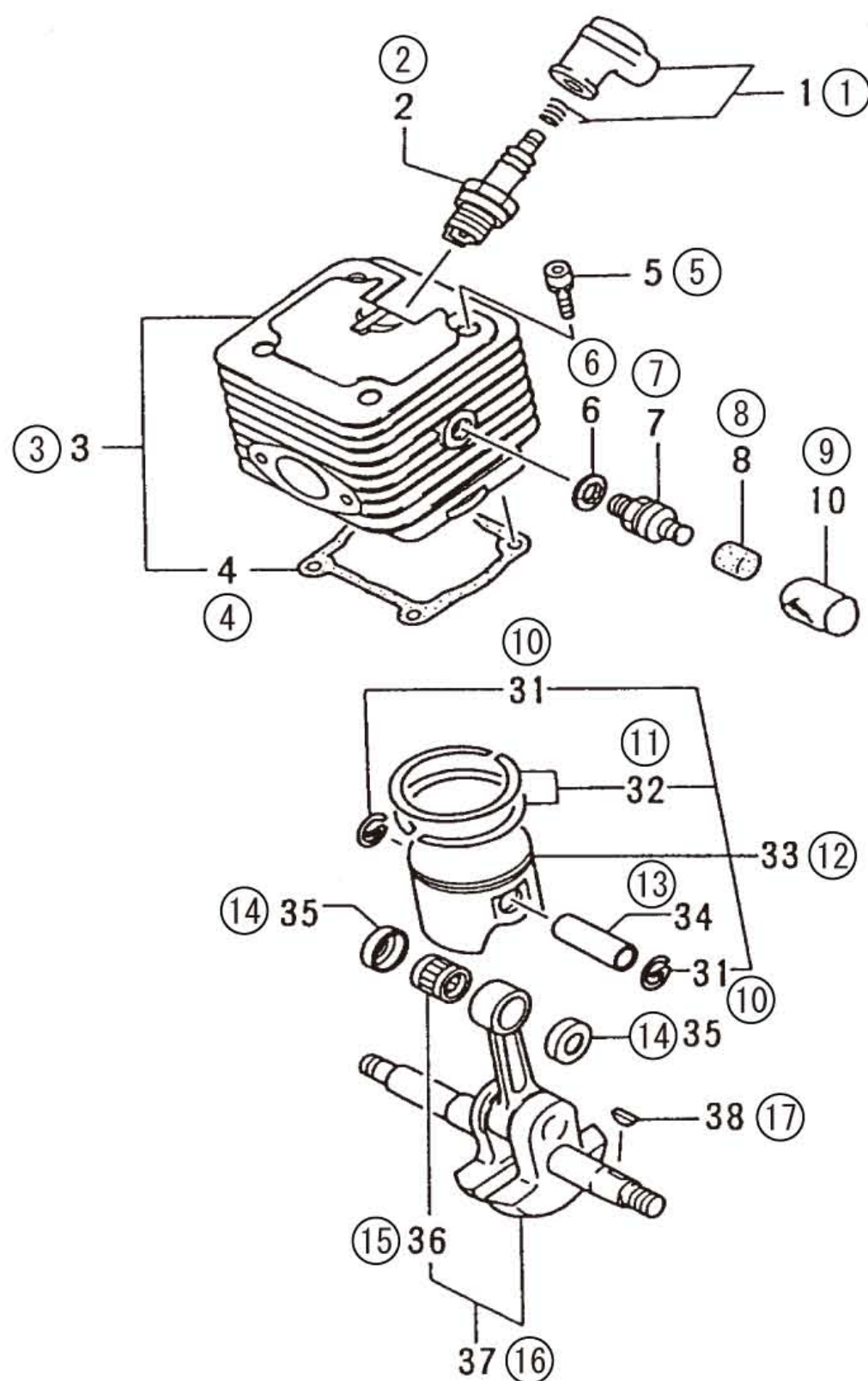


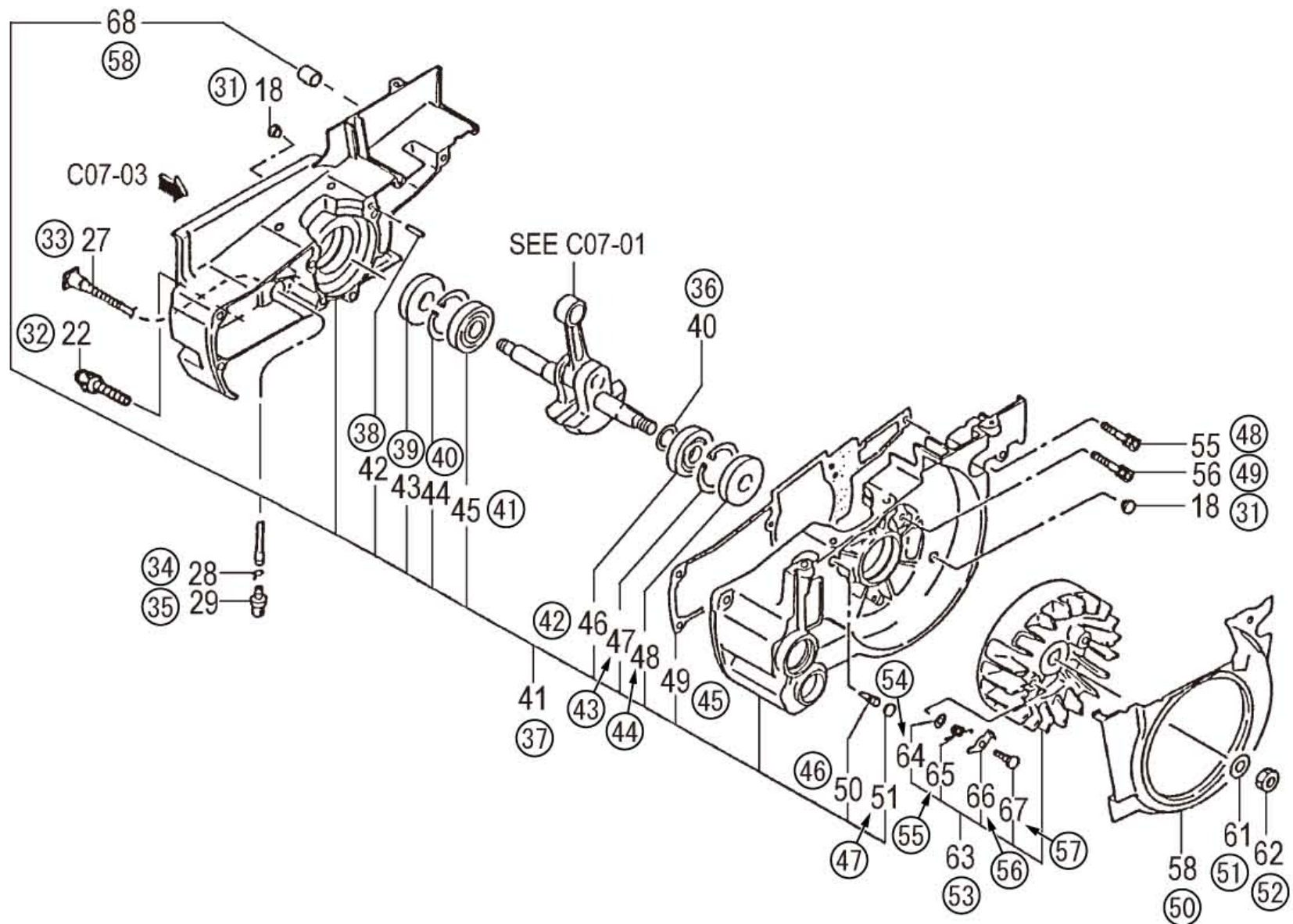
# C07-01 CYLINDER/PISTON/CRANK SHAFT



HITACHI NUMBER	REF. NUMBER	PARTS NUMBER	DESCRIPTION	Q'TY	TANAKA PARTS NUMBER
<b>C07-01 CYLINDER/PISTON/CRANK SHAFT</b>					
1	1	668-7468	SPARK PLUG CAP ASS'Y	1	157-01570-90
2	2	668-5780	SPARK PLUG BPM-7A	1	018-11610-21
3	3	668-5465	CYLINDER SET	1	001-04066-90
4	4	668-5732	CYLINDER PACKING	1	017-04066-20
5	5	669-5491	HEX. HOLE BOLT 5X20S	4	994-61050-205
6	6	668-5860	DECOMP. VALVE GASKET	1	028-04063-21
7	7	668-5589	DECOMPRESSION COMP.	1	004-04063-80
8	8	668-5800	DECOMP. COVER	1	020-04063-20
9	10	669-0808	DUST COVER	1	470-3252K-20
10	31	668-6026	PISTON PIN CIRCLIP	2	039-01000-20
11	32	668-6125	PISTON RING, 42.7 DIA.	2	041-04066-20
12	33	668-5884	PISTON SET, SPARE	1	030-04066-90
13	34	668-6007	PISTON PIN 10X30	1	037-01000-20
14	35	668-5993	PISTON PIN COLLAR	2	036-04090-20
15	36	669-5602	NEEDLE BEARING, 2X8.8	1	999-62101-480
16	37	668-6183	CRANK SHAFT COMP.	1	046-04067-80
17	38	668-4899	WOODRUFF KEY 3X13X4.5	1	068-10100-20



# C07-02 CRANK CASE



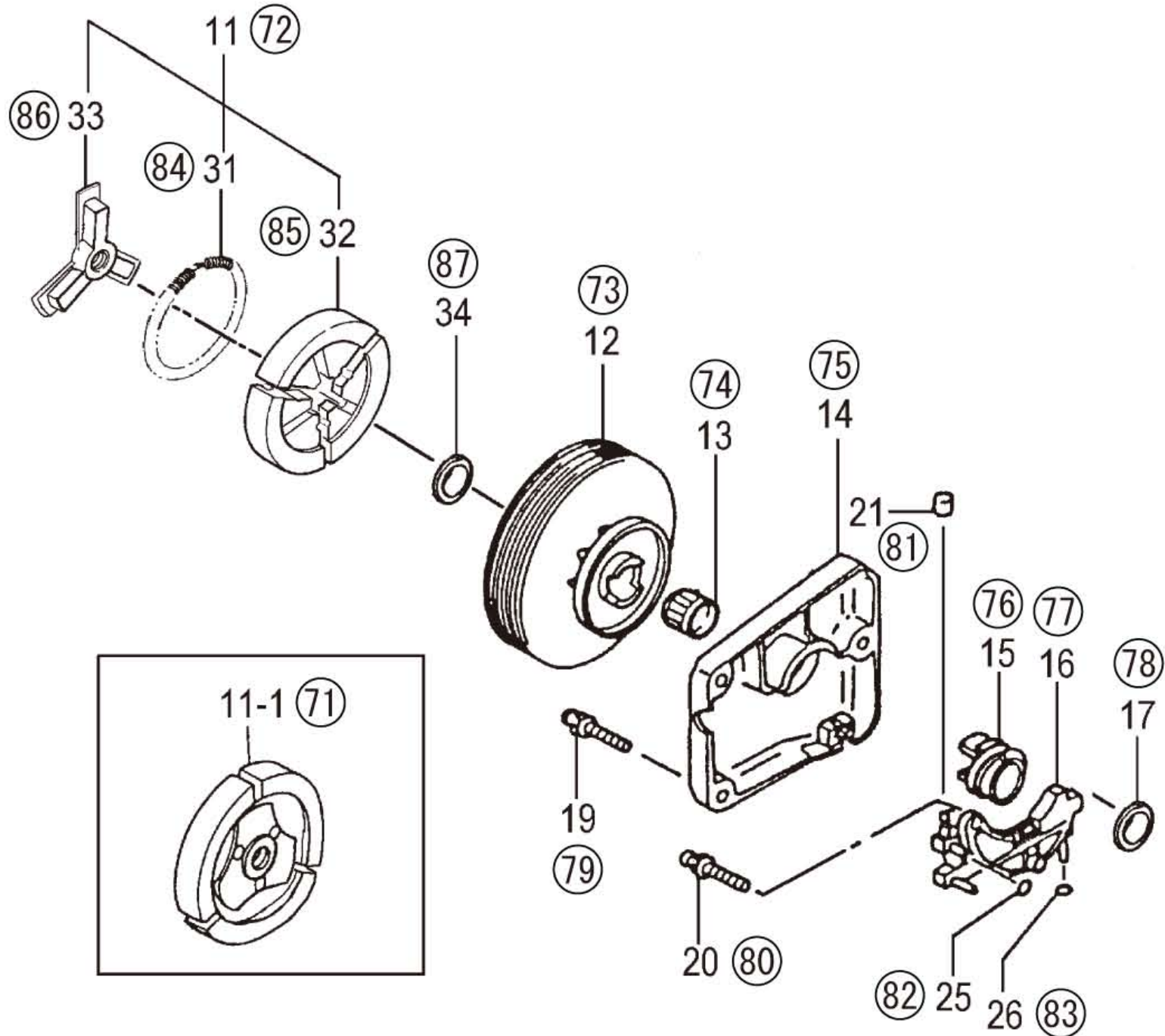
HITACHI NUMBER	REF. NUMBER	PARTS NUMBER	DESCRIPTION	Q'TY	TANAKA PARTS NUMBER
<b>C07-02 CRANK CASE</b>					
31	18	668-8164	SIDE DUMPER	2	222-3252K-21
32	22	669-5076	HEX HOLE SCREW 5X35	1	990-53050-353
33	27	669-1219	OIL PIPE A	1	515-3252K-20
34	28	669-2312	CLIP 7	1	680-04019-21
35	29	669-0914	OIL FILTER BODY COMP.	1	486-32530-80
36	40	668-6474	SHIM 0.1	V	071-04063-21
36	40	668-5098	SHIM S T0.2	V	071-04063-23
36	40	668-5099	SHIM S T0.3	V	071-04063-24
36	40	668-6475	SHIM 0.4	V	071-04063-25
37	41	668-6542	CRANK CASE ASS'Y	1	072-0406F-90
38	42	669-5520	KNOCK PIN 4X12	2	999-05041-201
39	43	669-5633	OIL SEAL ISMX12325.5	1	999-66123-219
40	44	669-5295	STOP RING C-32, INNER	1	993-51032-002
41	45	668-5096	BALL BEARING 6201 A2C3	1	999-61620-106
42	46	668-5096	BALL BEARING 6201 A2C3	1	999-61620-106
43	47	669-5295	STOP RING C-32, INNER	1	993-51032-002
44	48	669-5633	OIL SEAL ISMX12325.5	1	999-66123-219
45	49	668-6710	CRANKCASE GASKET	1	090-04063-22
46	50	668-5173	AIR VENT VALVE (B)	1	562-04060-20
47	51	669-1399	AIR VENT COVER	1	566-04063-20
48	55	668-4586	HEX.HOLE BOLT M5X18/S	3	994-61050-184
49	56	668-4786	HEX. SOCKET HD. BOLT M5X30 S	3	994-61050-304
50	58	668-7207	AIR DEFLECTOR	1	132-04063-20
51	61	668-4611	WASHER M8	1	992-01080-011
52	62	668-4612	HEX.NUT M8	1	991-01080-011
53	63	668-7395	MAGNETO ROTOR ASS'Y	1	155-21541-90
54	64	668-7942	SPECIAL WASHER	2	182-01700-20
55	65	669-3348	PAWL SPRING	2	790-04063-20
56	66	669-3304	STARTER PAWL	2	788-01700-20
57	67	669-3366	STEP BOLT	2	793-10200-20
58	68	668-8107	HANDLE DAMPER	1	217-3252K-20

形 名

ECV4501



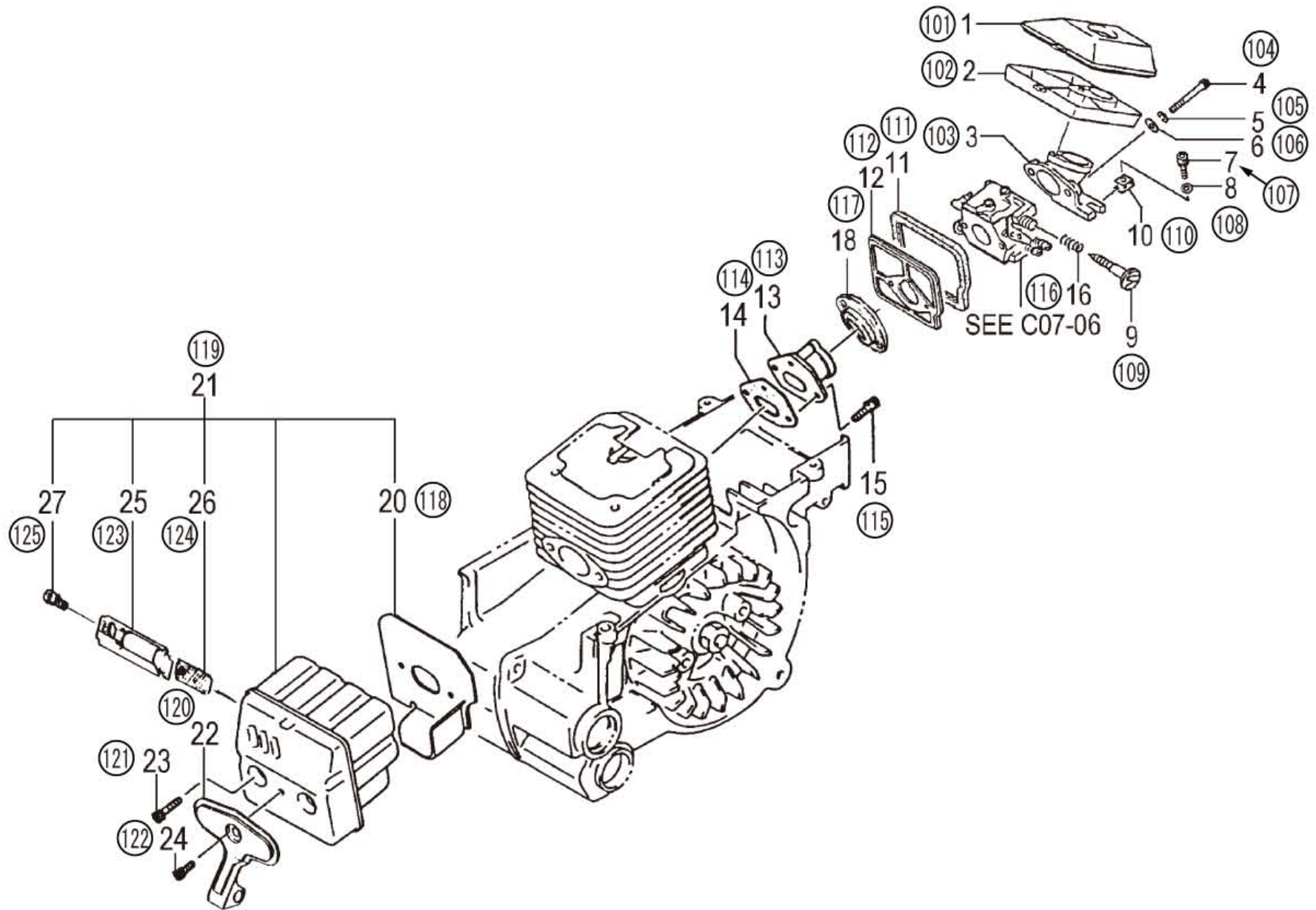
# C07-03 CLUTCH/OIL PUMP



HITACHI NUMBER	REF. NUMBER	PARTS NUMBER	DESCRIPTION	Q'TY	TANAKA PARTS NUMBER
<b>C07-03 CLUTCH/OIL PUMP</b>					
71	11-1	668-8563	CLUTCH COMP.	1	287-0409A-80
72	11	668-8489	CLUTCH ASS'Y, M9	1	277-04063-90
73	12	668-9009	CLUTCH HOUSING COMP. 7T	1	310-3252L-82
74	13	669-5606	NEEDLE BEARING KT111410G	1	999-62111-430
75	14	668-6755	OIL PUMP COVER	1	097-3252K-20
76	15	668-6640	SCREW GEAR COMP.	1	084-3252K-80
77	16	668-7331	OIL PUMP COMP.	1	145-3252K-81
78	17	668-6452	PINION WASHER 1T	1	067-35600-20
79	19	669-5403	SMALL SCREW 4X12WS	4	994-16040-126
79	19	669-5403	SMALL SCREW 4X12WS	3	994-16040-126
80	20	669-5407	HIGH TENSION SCREW 4X18WS	2	994-16040-186
81	21	668-6661	RELEASE VALVE	1	086-3252K-20
82	25	669-5659	O-RING S-3	1	999-67003-012
83	26	669-5661	O-RING P-5	1	999-67005-000
84	31	668-9426	CLUTCH SPRING	1	342-04063-21
85	32	668-9493	CLUTCH SHOE	3	345-04063-21
86	33	668-9497	CLUTCH BOSS	1	346-04063-20
87	34	668-9642	CLUTCH WASHER B	1	359-04063-20



# C07-04 AIR CLEANER/MUFFLER



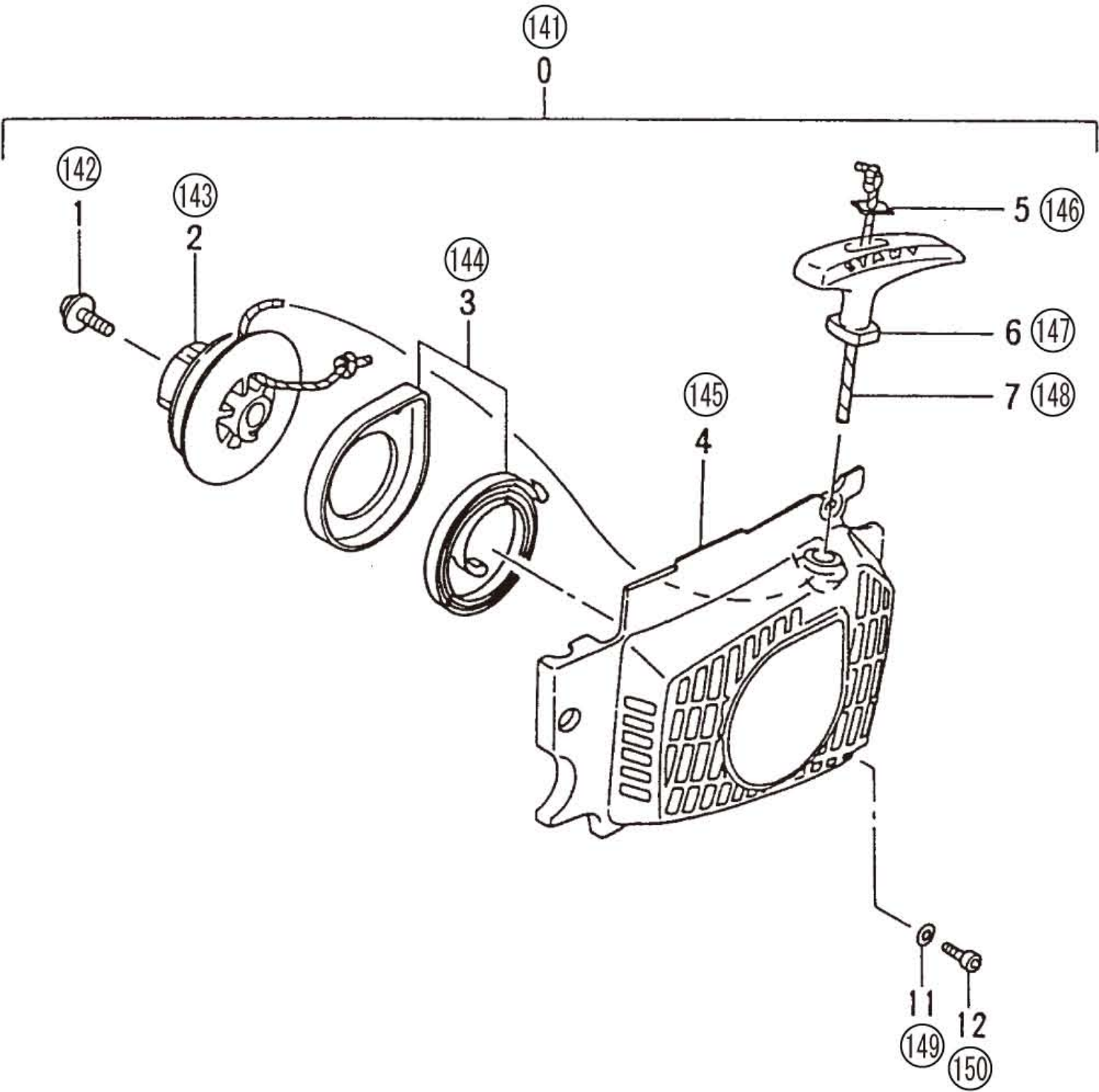
HITACHI NUMBER	REF. NUMBER	PARTS NUMBER	DESCRIPTION	Q'TY	TANAKA PARTS NUMBER
<b>C07-04 AIR CLEANER/ MUFFLER</b>					
101	1	669-0335	AIRCLEANER ELEMENT B COMP.	1	445-04063-80
102	2	669-0325	AIRCLEANER ELEMENT A COMP.	1	444-04063-80
103	3	669-0198	AIRCLEANER BASE COMP.	1	436-04063-80
104	4	669-5055	HEX. HOLE BOLT 5X45	2	990-51050-453
105	5	668-4662	S.WASHER 5	2	992-10050-012
106	6	668-4864	SMALL WASHER 5	2	992-00050-011
107	7	668-4903	HEX.HOLE BOLT M5X16/S	1	994-61050-164
107	7	669-5512	HEX. HOLE BOLT 5X15WS	1	994-64050-154
108	8	668-4661	WASHER 5	1	992-01050-011
109	9	668-7993	IDLE ADJUSTMENT SCREW	1	197-3252K-80
110	10	668-7943	SPECIAL WASHER	1	182-04063-20
111	11	669-0004	CARB. INSULATOR, RUBBER	1	409-04063-20
112	12	668-9941	INSULATOR COMP.	1	404-04063-81
113	13	668-9789	INLET MANIFOLD COMP.	1	391-04063-80
114	14	668-9876	INLET MANIFOLD GASKET	1	403-04063-20
115	15	669-5484	HEX. HOLE BOLT 4X10S	2	994-61040-104
115	15	668-4595	HEX.HOLE BOLT M4X12/S	2	994-61040-124
116	16	669-0766	IDLE ADJUST SPRING	1	463-25012-20
117	18	668-5202	INLET MANIFOLD SPACER	1	400-32970-20
118	20	669-2737	MUFFLER GASKET	1	737-04063-20
119	21	669-2460	MUFFLER SET, SPARE	1	704-04065-90
120	22	669-2941	MUFFLER STAY	1	760-04065-20
121	23	668-4903	HEX.HOLE BOLT M5X16/S	2	994-61050-164
122	24	669-5036	HEX. HOLE BOLT 4X10	1	990-51040-106
123	25	669-2647	TAIL PIPE	1	721-04065-20
124	26	669-2694	MUFFLER STEEL NET	1	732-04065-20
125	27	669-5036	HEX. HOLE BOLT 4X10	1	990-51040-106

形 名

ECV4501

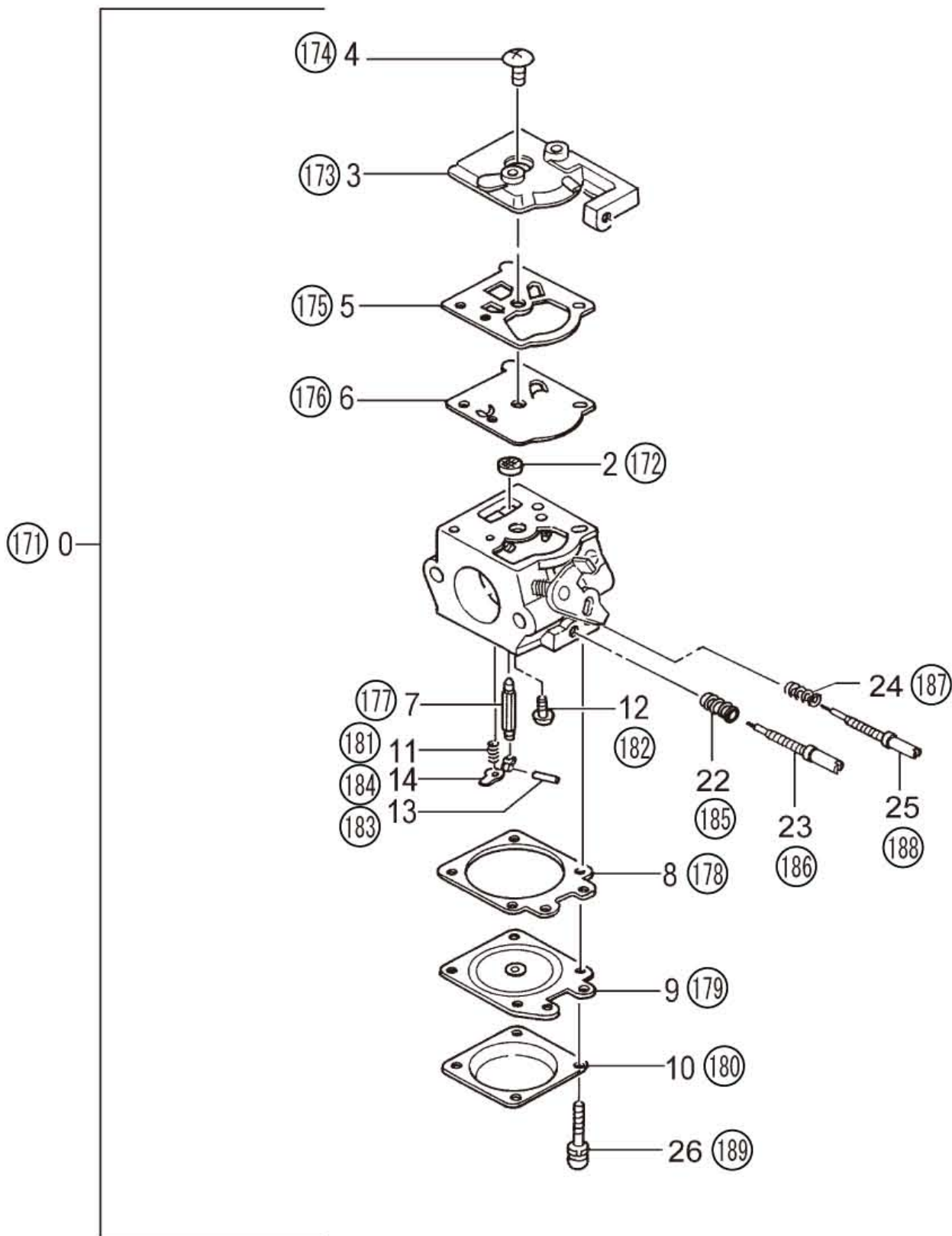


# C07-05 RECOIL STARTER



HITACHI NUMBER	REF. NUMBER	PARTS NUMBER	DESCRIPTION	Q'TY	TANAKA PARTS NUMBER
C07-05 RECOIL STARTER					
141	0	669-2916	RECOIL STARTER ASS'Y	1	756-04065-90
142	1	669-3633	SET SCREW	1	839-02010-20
143	2	669-3059	STARTER ROPE REEL	1	774-01700-20
144	3	669-3096	RECOIL SPRING CASE	1	778-04063-90
145	4	668-6963	FAN CASE COMP.	1	112-04065-80
146	5	668-5189	PLATE	1	795-04063-20
147	6	669-3230	STARTER HANDLE	1	785-04063-20
148	7	669-3158	STARTER ROPE	1	783-01700-20
149	11	668-4864	SMALL WASHER 5	3	992-00050-011
150	12	668-4903	HEX.HOLE BOLT M5X16/S	3	994-61050-164
150	12	669-5512	HEX. HOLE BOLT 5X15WS	3	994-64050-154

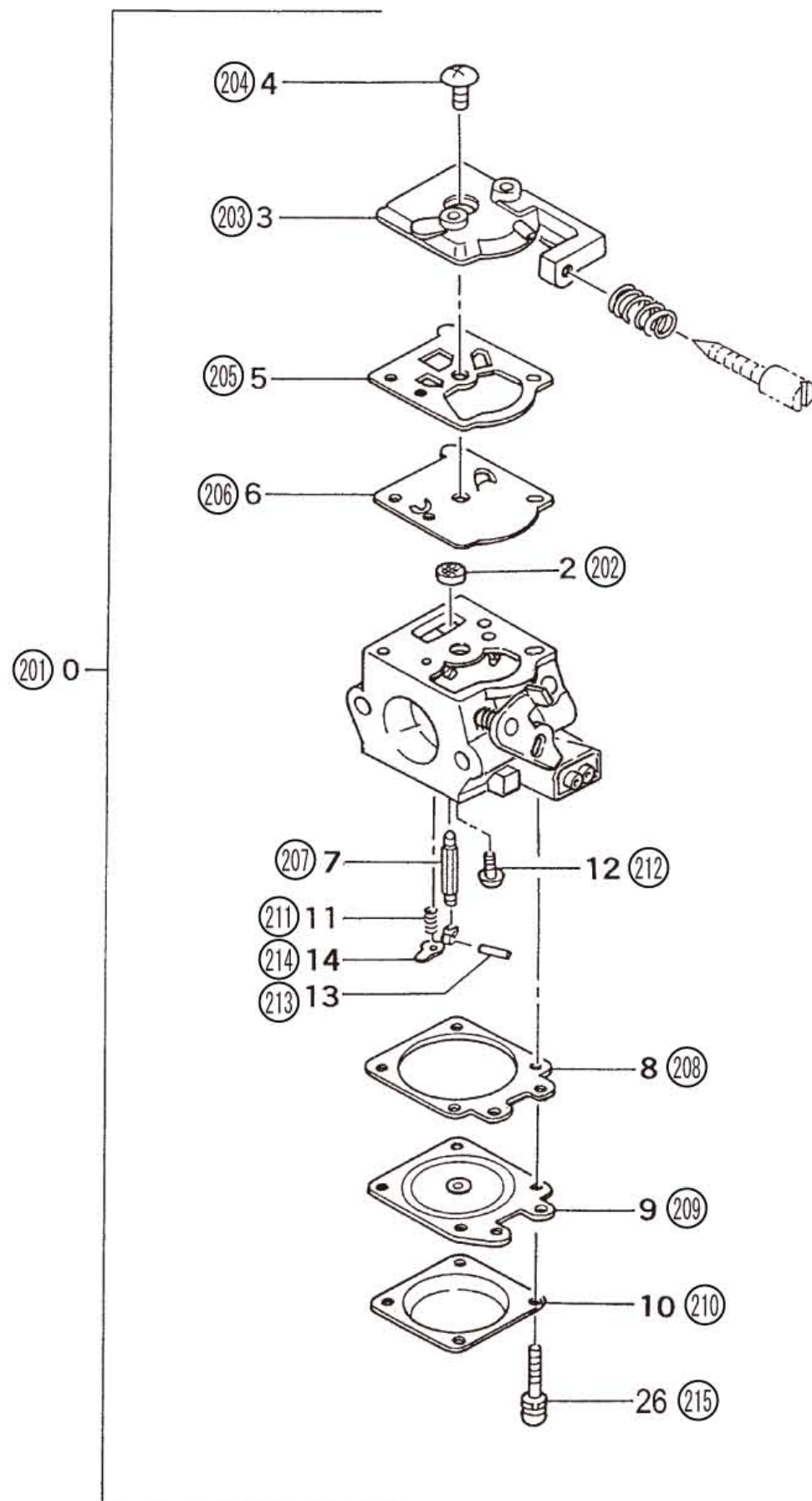
C07-06 CARBURETOR (NONE EMISSION TYPE)



HITACHI NUMBER	REF. NUMBER	PARTS NUMBER	DESCRIPTION	Q'TY	TANAKA PARTS NUMBER
C07-06 CARBURETOR (NONE EMISS TYPE)					
171	0	669-0605	CARBURETOR ASS'Y WT484	1	455-25092-90
172	2	668-4700	INLET SCREEN	1	578-25007-20
173	3	669-1416	PUMP BODY	1	575-25006-20
174	4	668-5210	SCREW	1	514-25001-20
175	5	668-5212	PUMP GASKET	1	577-25007-20
176	6	668-5213	PUMP DIAPHRAGM	1	576-25006-20
177	7	668-5215	NEEDLE VALVE	1	603-25012-20
178	8	668-5220	DIAPHRAGM PACKING	1	475-25038-20
179	9	669-0827	METERING DIAPHRAGM COMP. #	1	474-25001-80
180	10	668-5222	DIAPHRAGM COVER	1	476-25004-20
181	11	669-0872	VALVE SPRING	1	477-25080-20
182	12	668-5218	HINGE PIN SET SCREW	1	546-25001-20
183	13	668-5219	HINGE PIN	1	605-25001-20
184	14	668-5217	CONTROL LEVER	1	473-25001-20
185	22	669-2048	HIGH/LOW ADJUST SPRING	1	623-25032-20
186	23	669-0719	LOW ADJUSTMENT SCREW	1	461-25086-20
187	24	669-0897	HIGH ADJUSTMENT SPRING	1	485-25040-20
188	25	669-0696	HIGH ADJUST SCREW	1	460-25080-20
189	26	668-5223	SET SCREW	4	548-25012-20
		669-2184	CARB. REPAIR KIT, K10-WAT	1	650-25001-91
		669-2194	GASKET/DIA. KIT, D10WAT	1	652-25001-91



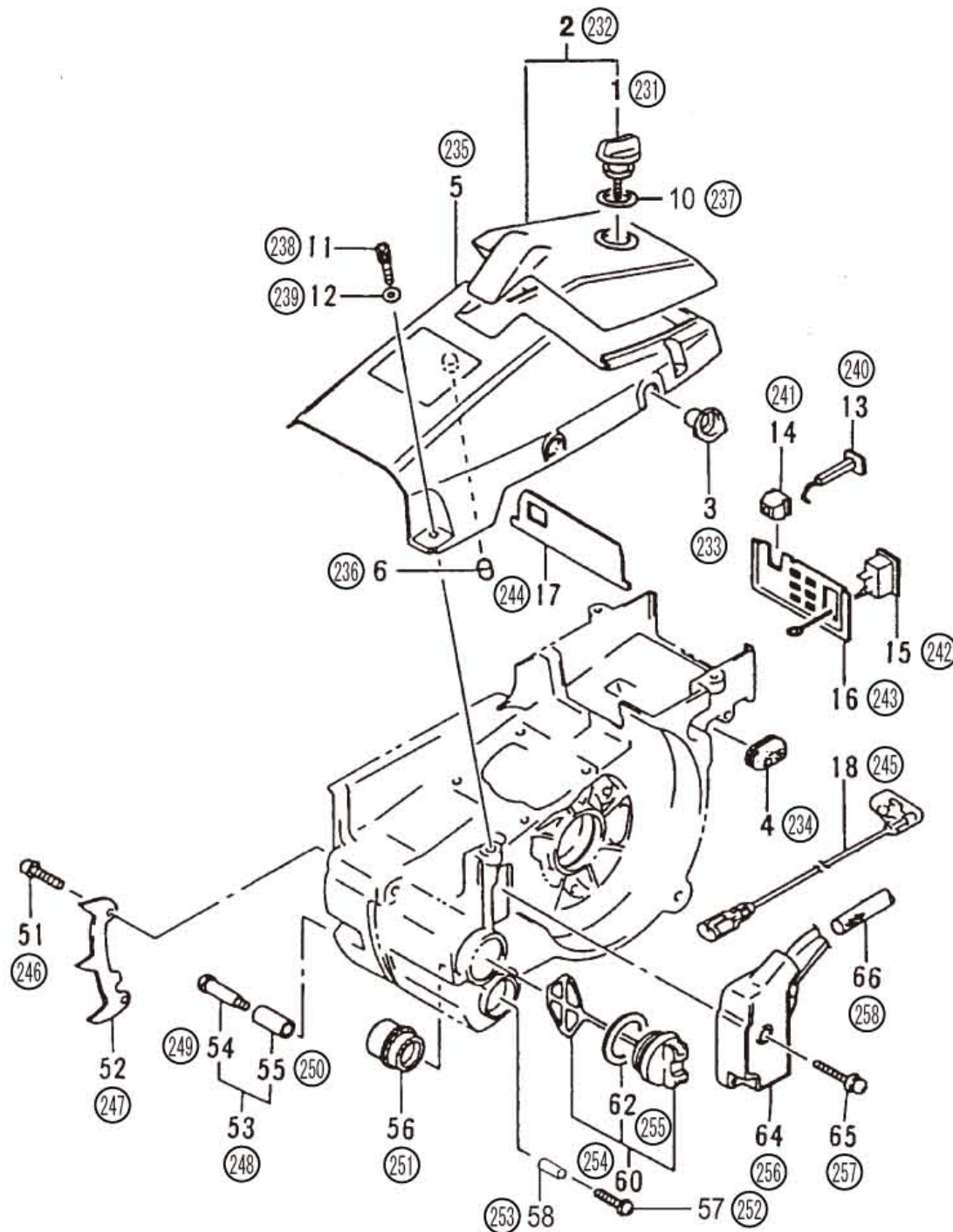
# C07-07 CARBURETOR (EMISSION TYPE)



HITACHI NUMBER	REF. NUMBER	PARTS NUMBER	DESCRIPTION	Q'TY	TANAKA PARTS NUMBER
<b>C07-07 CARBURETOR (EMISSION TYPE)</b>					
201	0	669-0606	CARBURETOR ASS'Y WT-497A	1	455-25095-90
202	2	668-4700	INLET SCREEN	1	578-25007-20
203	3	669-1416	PUMP BODY	1	575-25006-20
204	4	668-5210	SCREW	1	514-25001-20
205	5	668-5212	PUMP GASKET	1	577-25007-20
206	6	668-5213	PUMP DIAPHRAGM	1	576-25006-20
207	7	668-5215	NEEDLE VALVE	1	603-25012-20
208	8	668-5220	DIAPHRAGM PACKING	1	475-25038-20
209	9	669-0827	METERING DIAPHRAGM COMP. #	1	474-25001-80
210	10	668-5222	DIAPHRAGM COVER	1	476-25004-20
211	11	669-0872	VALVE SPRING	1	477-25080-20
212	12	668-5218	HINGE PIN SET SCREW	1	546-25001-20
213	13	668-5219	HINGE PIN	1	605-25001-20
214	14	668-5217	CONTROL LEVER	1	473-25001-20
215	26	668-5223	SET SCREW	4	548-25012-20
		669-2184	CARB. REPAIR KIT, K10-WAT	1	650-25001-91
		669-2194	GASKET/DIA. KIT, D10WAT	1	652-25001-91



# C07-08 IGNITION COIL/COVER



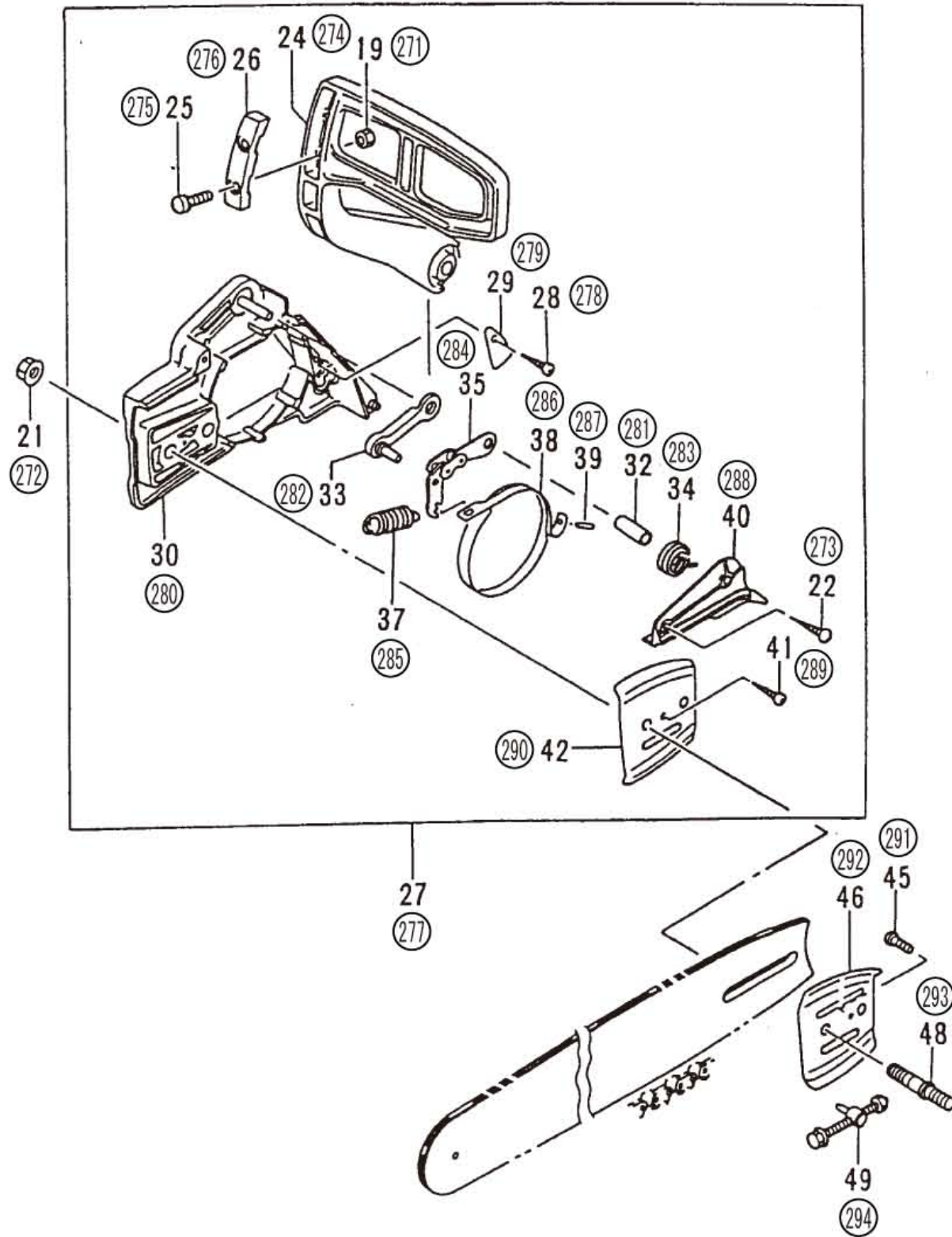
HITACHI NUMBER	REF. NUMBER	PARTS NUMBER	DESCRIPTION	Q'TY	TANAKA PARTS NUMBER
<b>C07-08 IGNITION COIL/COVER</b>					
231	1	668-7793	AIRCLEANER KNOB COMP.	1	175-3252K-80
232	2	669-0404	CLEANER COVER SET, SPARE	1	452-04065-90
233	3	668-7974	IDLE GROMMET	1	191-3252K-20
234	4	668-7954	ADJUSTER CAP	1	190-3252K-20
235	5	668-5681	CYLINDER COVER	1	016-04065-20
236	6	669-1825	CYLINDR SUPPORT RUBBER	1	599-04063-20
237	10	669-0056	CLEANER PACKING	1	418-04063-20
238	11	668-4903	HEX.HOLE BOLT M5X16/S	3	994-61050-164
238	11	669-5512	HEX. HOLE BOLT 5X15WS	3	994-64050-154
239	12	668-4864	SMALL WASHER 5	3	992-00050-011
240	13	669-2507	CHOKE BUTTON COMP.	1	704-3252K-80
241	14	669-2587	CHOKE ROD HOLDING RUBBER	1	707-32550-20
242	15	668-7506	STOP SWITCH COMP.	1	162-04063-81
243	16	669-1192	CONTROL PLATE	1	511-04063-20
244	17	668-7952	SHUTTER PLATE	1	188-3252K-20
245	18	668-7929	STOP CORD, B225M	1	179-04063-81
246	51	668-4667	HEX.HOLE BOLT M5X12/S	2	994-61050-124
247	52	669-0705	BUMPER SPIKE	1	460-3252K-20
248	53	668-7163	CHAIN CATCHER	1	125-3252K-90
249	54	668-9734	SPECIAL BOLT	1	380-04063-20
250	55	668-5154	FUEL PIPE	1	700-07105-02
251	56	668-8113	DAMPER COMP.	2	219-32600-82
252	57	669-5106	TAPPING SCREW 5X18	2	990-73050-184
252	57	669-5107	TAPPING SCREW 5X35	2	990-73050-354
253	58	669-2248	COLLAR 15	2	659-37922-20
254	60	668-5178	OIL TANK CAP ASS'Y	1	642-3252K-90
255	62	668-5177	OIL TANK CAP PACKING	1	523-3252K-20
256	64	668-7695	IGNITION COIL COMP.	1	167-21527-81
257	65	668-4599	HEX.HOLE BOLT M4X18/WS	2	994-64040-184
258	66	668-8317	CORD INSULATOR TUBE	1	250-04063-21

形 名

ECV4501



# C07-09 CHAIN BRAKE



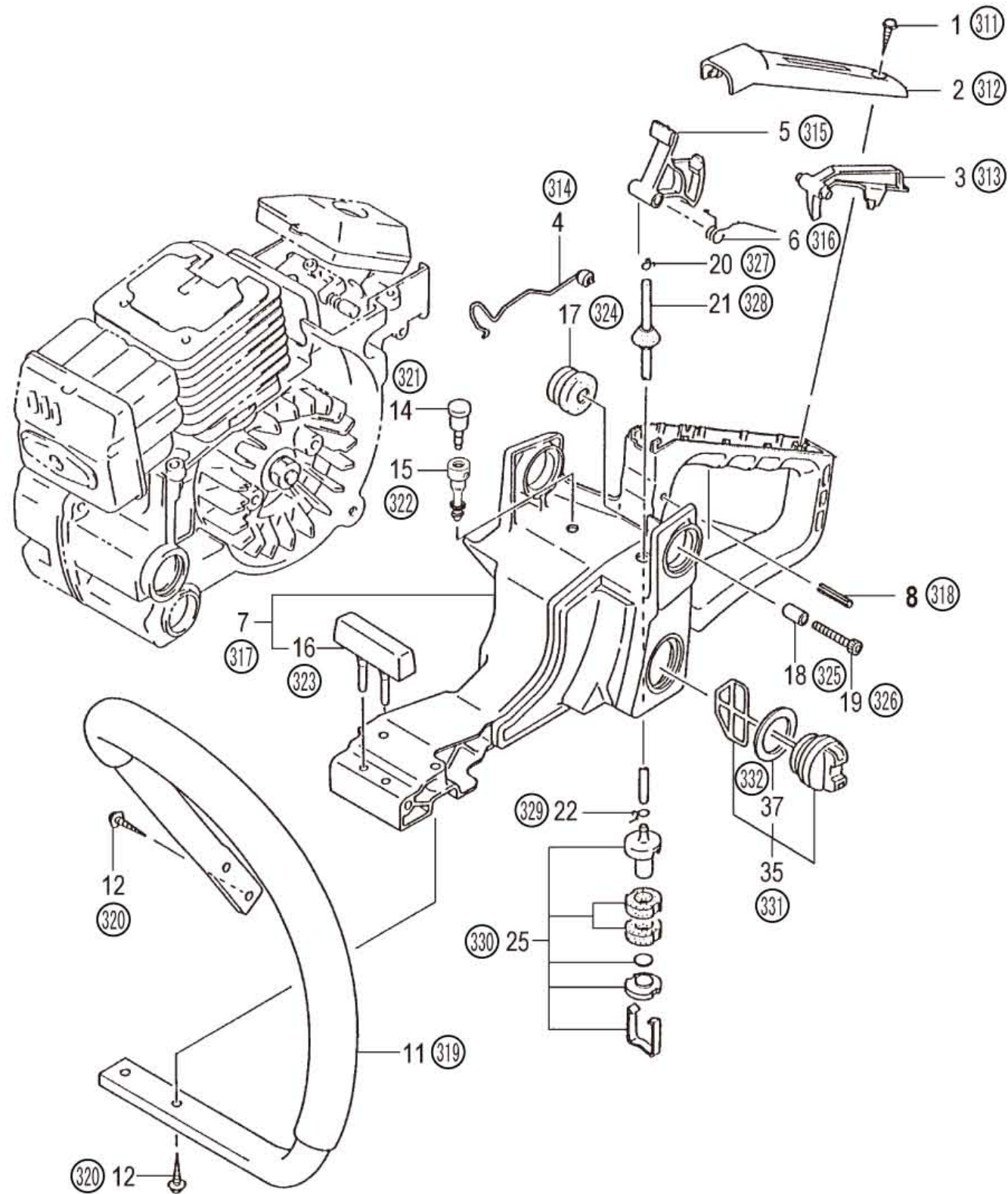
HITACHI NUMBER	REF. NUMBER	PARTS NUMBER	DESCRIPTION	Q'TY	TANAKA PARTS NUMBER
<b>C07-09 CHAIN BRAKE</b>					
271	19	668-5069	NUT M4	2	991-01040-011
272	21	668-5166	NUT	2	121-32530-20
272	21	668-7105	CHAIN BAR CLAMP NUT	2	121-32600-20
273	22	669-5112	TAPPING SCREW 4X15	2	990-75040-154
273	22	669-5112	TAPPING SCREW 4X15	3	990-75040-154
274	24	669-3454	FRONT HAND GUARD	1	805-3252K-20
275	25	668-5068	MACHINE SCREW (W/SP. WASHER) M4X12	2	994-14040-121
276	26	669-3481	HAND GUARD WEIGHT	1	808-3252K-20
277	27	668-6095	SIDE CASE ASS'Y	1	040-3285B-91
278	28	668-5161	TAPPING SCREW D4X10	1	993-41040-101
279	29	668-9715	BRAKE BAND HOLDER	1	376-3252P-21
280	30	668-6043	SIDE COVER COMP.	1	039-3285B-81
281	32	669-0805	CLEANER FIXING COLLAR	1	470-10246-20
282	33	668-9777	BRAKE SUPPORT FITTING COMP.	1	386-3252K-80
283	34	668-9781	BRAKE LEVER SPRING	1	388-3252K-21
284	35	668-5121	BRAKE LINK COMP.	1	379-32901-80
285	37	668-9700	BRAKE SPRING	1	374-3252K-21
286	38	668-9724	BRAKE BAND	1	378-3252K-21
287	39	668-5141	NEEDLE ROLLER 3X9.8	1	999-05300-980
288	40	668-9709	BRAKE LINK COVER	1	375-3252Y-21
289	41	668-5161	TAPPING SCREW D4X10	1	993-41040-101
290	42	669-0750	GUIDE PLATE B	1	462-3252K-20
291	45	669-4861	SCREW 4X8	1	990-11040-081
292	46	669-0727	GUIDE PLATE A	1	461-3252K-20
293	48	668-6804	CHAIN BAR STUD BOLT	2	101-32530-20
294	49	668-7067	CHAIN TENSION BOLT ASSY	1	116-3252K-90

形 名

ECV4501



# C07-10 HANDLE



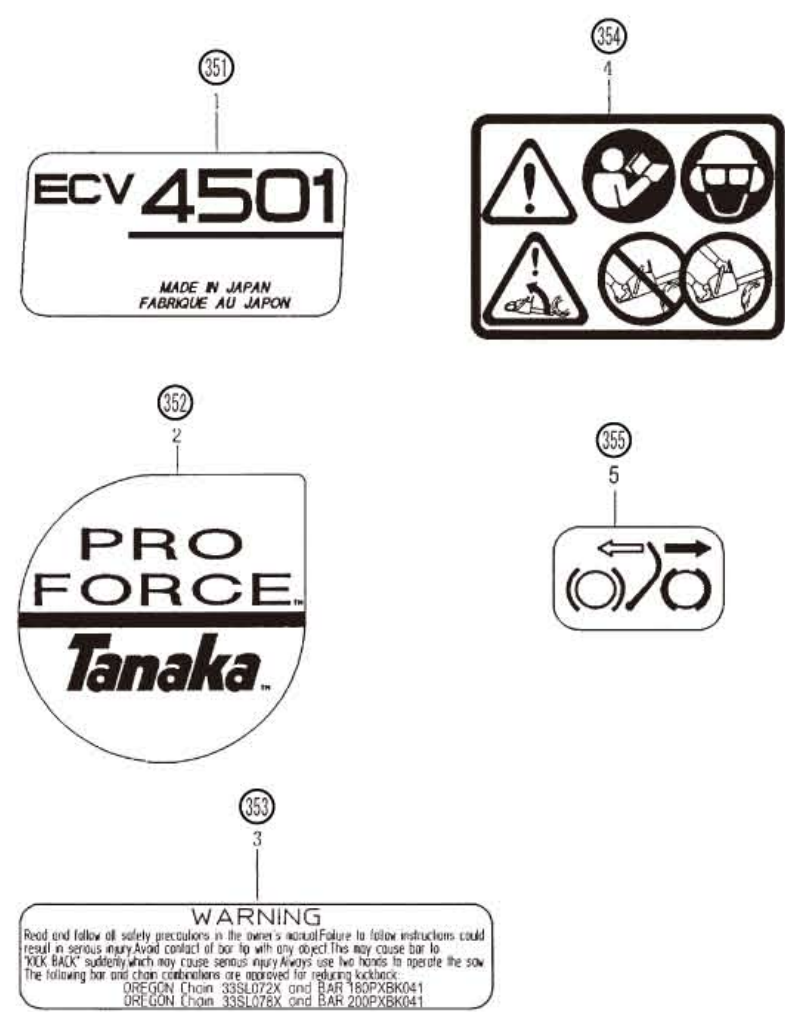
HITACHI NUMBER	REF. NUMBER	PARTS NUMBER	DESCRIPTION	Q'TY	TANAKA PARTS NUMBER
<b>C07-10 HANDLE</b>					
311	1	669-5106	TAPPING SCREW 5X18	1	990-73050-184
312	2	668-8212	REAR HANDLE GRIP	1	227-3252K-22
313	3	668-8352	THROTTLE TRIGGER LOCKOUT	1	257-3252K-20
314	4	669-0967	THROTTLE ROD COMP.	1	490-3252K-81
315	5	668-6381	THROTTLE LEVER	1	060-3252K-20
316	6	668-6412	THROTTLE LEVER SPRING	1	061-3252K-20
317	7	668-5663	REAR HANDLE ASS'Y	1	012-3285B-91
318	8	668-5282	SPRING PIN 5X25	1	993-26005-254
319	11	668-8079	FRONT HANDLE COMP.	1	209-3285A-80
320	12	669-5106	TAPPING SCREW 5X18	4	990-73050-184
321	14	669-2171	AIR VENT VALVE ASS'Y	1	646-06612-90
322	15	669-1391	AIRVENT PIPE	1	565-04063-20
323	16	668-8241	FRONT DAMPER	1	232-3252K-20
324	17	668-8261	DAMPER COMP.	2	244-3252K-80
325	18	668-8478	DAPMPER COLLAR	2	275-3252K-20
326	19	669-5039	HEX. HOLE BOLT 4X20	2	990-51040-203
327	20	669-2311	CLIP 5.2	1	680-04001-20
328	21	668-8173	FUEL PIPE ASS'Y L=195	1	223-0622U-90
329	22	668-4619	CLIP, 6.3 DIA.	1	680-00731-20
330	25	669-2285	PUMP FILTER BODY ASS'Y	1	675-11657-90
331	35	669-2111	TANKCAP ASS'Y	1	635-3252K-90
332	37	668-5179	TANK CAP PACKING	1	630-3252K-20

形 名

ECV4501

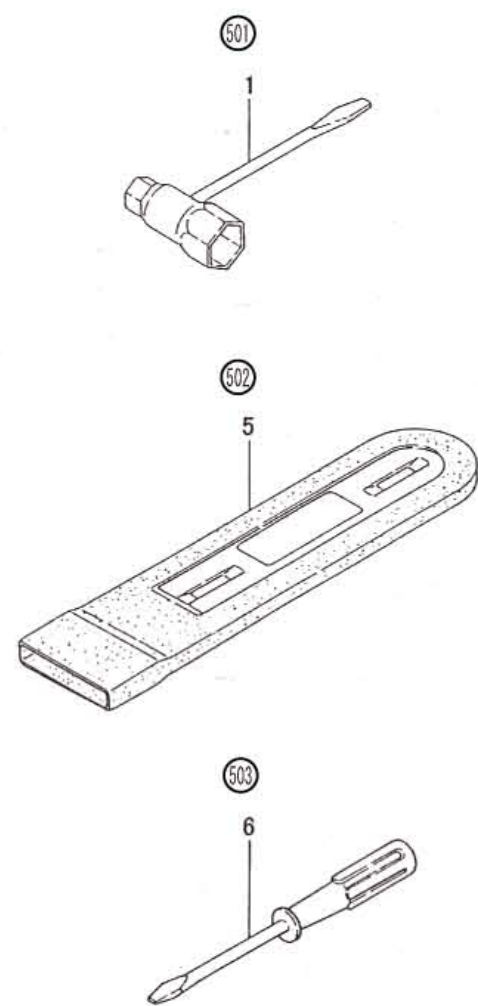


C07-11 LABELS



HITACHI NUMBER	REF. NUMBER	PARTS NUMBER	DESCRIPTION	Q'TY	TANAKA PARTS NUMBER
C07-11 LABELS					
351	1	669-4281	NAME PLATE, ECV-4501	1	906-3286A-20
352	2	669-4492	STARTER MARK, PROFORCE	1	915-3285F-20
353	3	669-4425	CAUTION MARK, KICK-BACK	1	907-3286A-20
354	4	669-4443	CAUTION MARK A	1	909-32653-20
355	5	669-4444	CAUTION MARK A	1	909-3285B-20

C07-12 TOOLS



HITACHI NUMBER	REF. NUMBER	PARTS NUMBER	DESCRIPTION	Q'TY	TANAKA PARTS NUMBER
C07-12 TOOLS					
501	1	668-5666	COMBI. BOX SPANNER 10X19	1	013-29325-40
501	1	669-3809	COMBI. BOX SPANNER 13X19 MINUS	1	883-32600-20
502	5	669-4809	CHAIN COVER 16	1	947-32055-20
502	5	669-4804	CHAIN COVER 20	1	945-3254D-21
503	6	668-6632	4X50 MINUS DRIVER	1	081-29329-7U