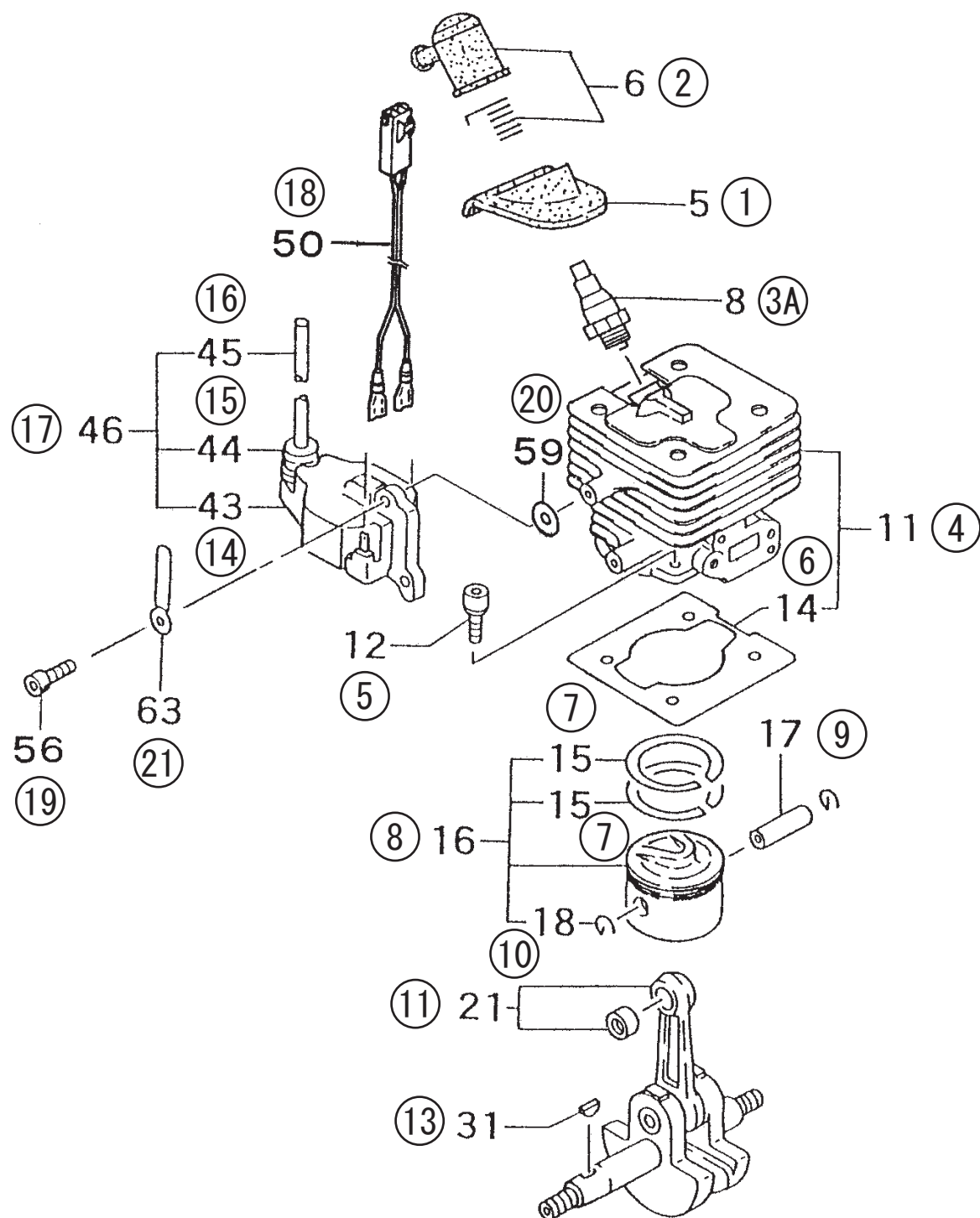
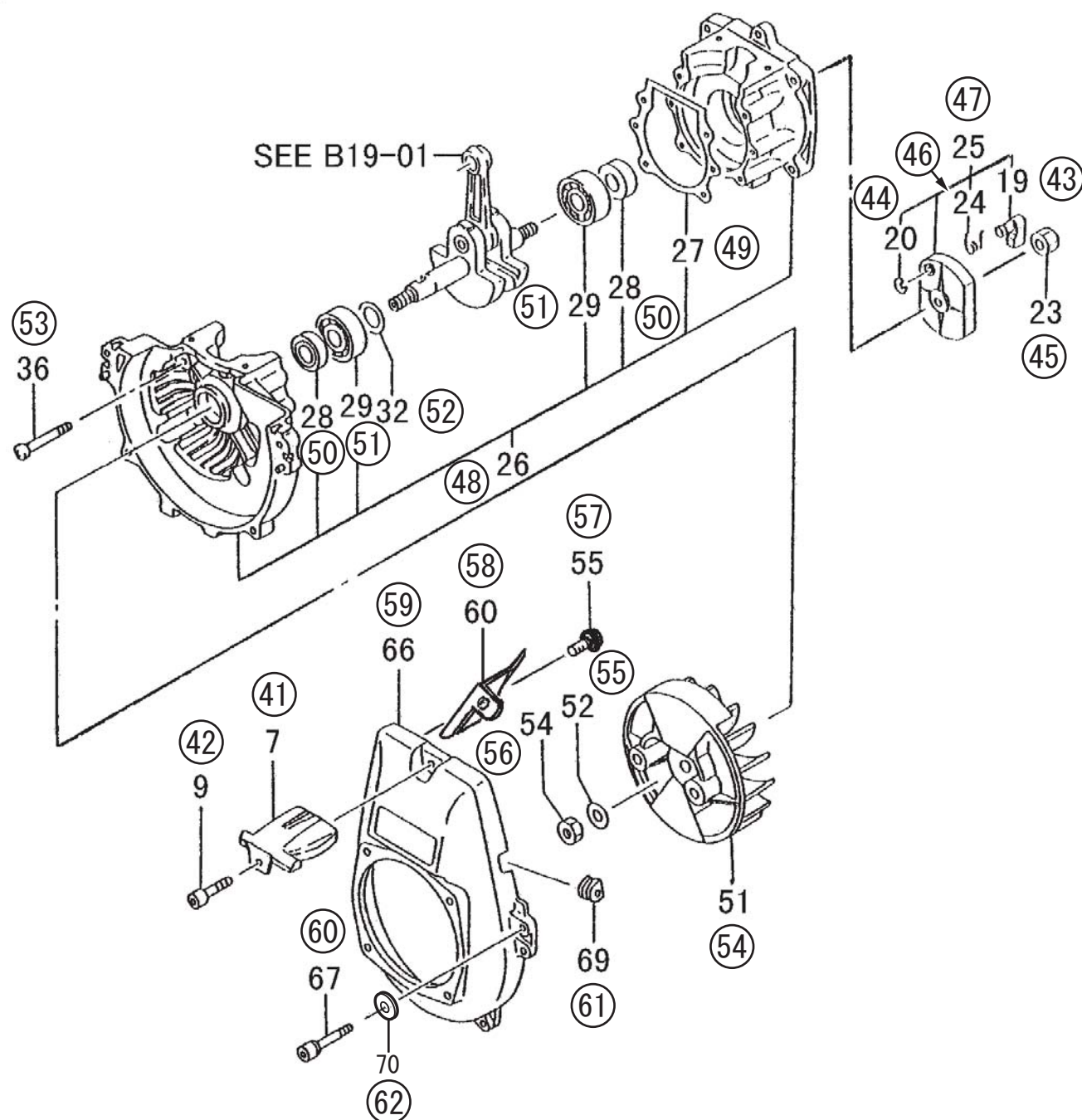


B19-01 CYLINDER/PISTON/CRANK SHAFT



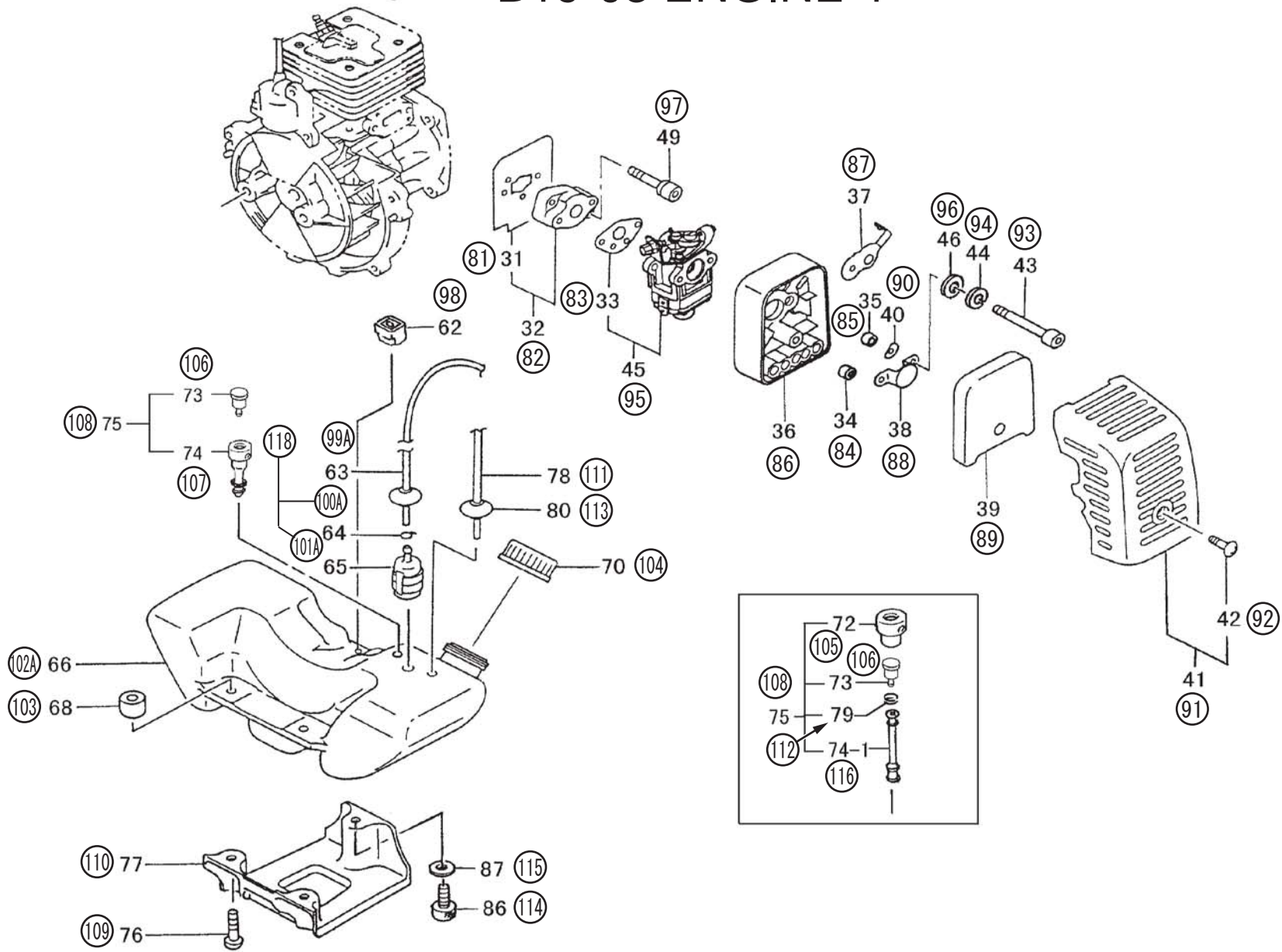
| HITACHI NUMBER | REF. NUMBER | PARTS NUMBER | DESCRIPTION | Q'TY | TANAKA PARTS NUMBER |
|------------------------------------|----------------|-----------------|-------------------------|------|------------------------|
| B19-01 CYLINDER/PISTON/CRANK SHAFT | | | | | |
| 1 | 5 | 668-8336 | SPARK PLUG RUBBER COVER | 1 | 255-04200-20 |
| 2 | 6 | 668-7479 | SPARK PLUG CAP ASS'Y | 1 | 157-11666-90 |
| 3 | 8 | 668-5085 | SPARK PLUG BPM6A | 1 | 018-11660-21 |
| 4 | 11 | 668-5476 | CYLINDER SET | 1 | 001-04405-90 |
| 4 | 11 | 668-5477 | CYLINDER SET PN | 1 | 001-04413-90 |
| 5 | 12 | 668-4668 | HEX.HOLE BOLT M5X20/S | 4 | 994-61050-204 |
| 6 | 14 | 668-5741 | CYLINDER GASKET | 1 | 017-04400-20 |
| 7 | 15 | 668-6123 | PISTON RING | 2 | 041-04050-20 |
| 8 | 16 | 668-5889 | PISTON SET | 1 | 030-04400-90 |
| 8 | 16 | 668-5888 | PISTON SET | 1 | 030-0423Z-90 |
| 9 | 17 | 668-6007 | PISTON PIN 10X30 | 1 | 037-01000-20 |
| 10 | 18 | 668-6032 | PISTON PIN CIRCLIP | 2 | 039-05004-20 |
| 11 | 21 | 668-6192 | CRANK SHAFT COMP. | 1 | 046-04400-80 |
| 13 | 31 | 668-6457 | WOOD-RUFF KEY 3X13X5 | 1 | 068-02000-20 |
| 14 | 43 | 668-7655 | IGNITION COIL COMP. | 1 | 167-20543-80 |
| 15 | 44 | 668-4602 | RUBBER CAP | 1 | 560-20517-20 |
| 16 | 45 | 668-7885 | HIGHT TENSION CORD | 1 | 178-20543-22 |
| 17 | 46 | 668-7657 | IGNITION COIL ASS'Y | 1 | 167-20543-91 |
| 18 | 50 | 668-7970 | LEAD WIRE ASS'Y | 1 | 191-04405-90 |
| 19 | 56 | 669-5406 | SCREW 4X18/WS | 2 | 994-16040-183 |
| 20 | 59 | 668-4600 | WASHER | 2 | 182-0186A-20 |
| 21 | 63 | 668-8011 | CORD CLAMP COMP. | 1 | 198-11600-80 |

B19-02 CRANK CASE



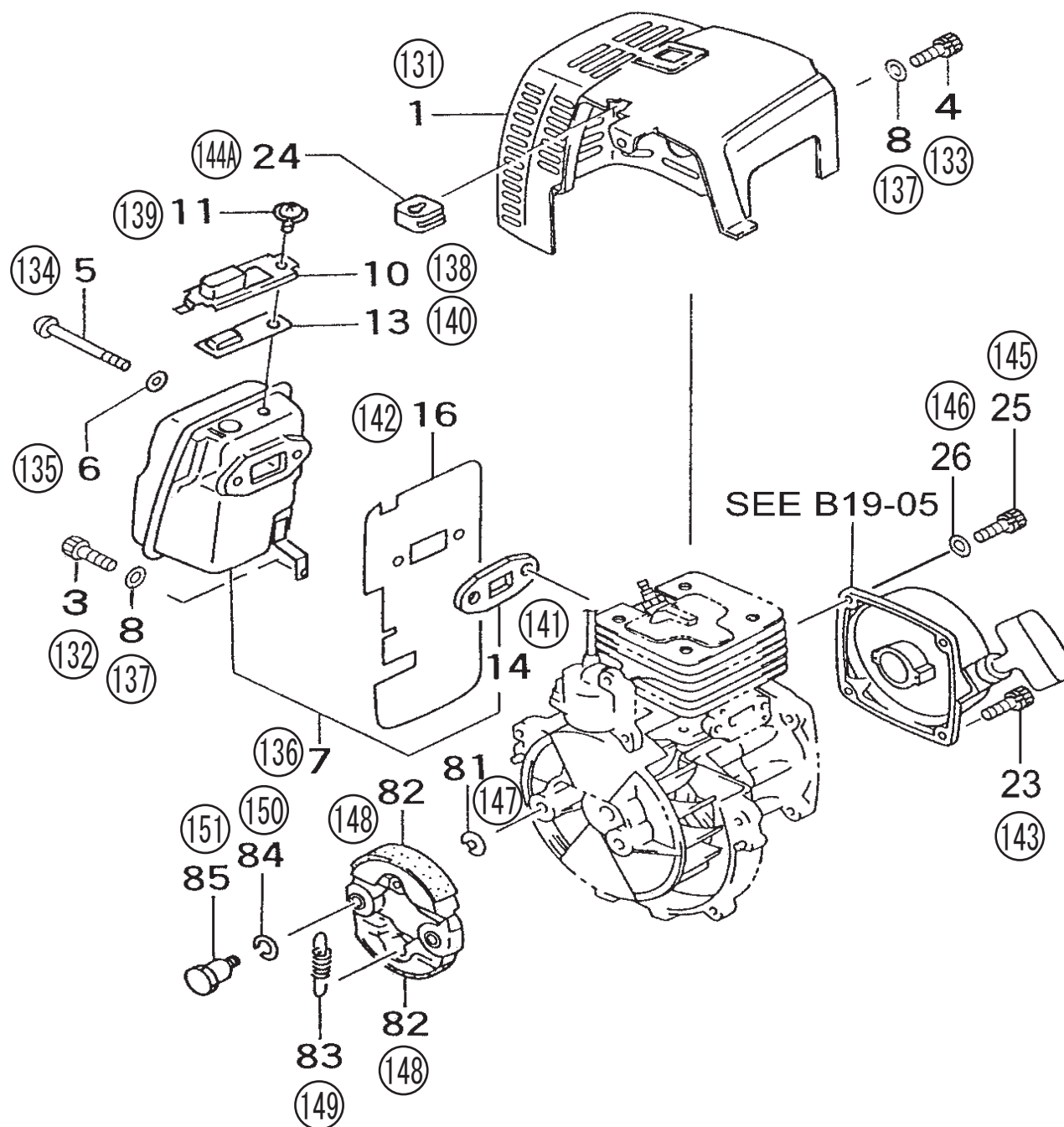
| HITACHI NUMBER | REF. NUMBER | PARTS NUMBER | DESCRIPTION | Q'TY | TANAKA PARTS NUMBER |
|--------------------------|----------------|-----------------|------------------------------|------|------------------------|
| B19-02 CRANK CASE | | | | | |
| 41 | 7 | 668-8348 | PROTECTOR | 1 | 257-04400-20 |
| 42 | 9 | 668-4634 | HEX.HOLE BOLT 5X20/PS | 1 | 994-63050-204 |
| 43 | 19 | 669-3302 | STARTER PAWL | 1 | 788-0162V-20 |
| 44 | 20 | 668-4683 | STOP RING E-5 | 1 | 993-55050-000 |
| 45 | 23 | 669-5139 | SMALL NUT 10 | 1 | 991-11100-013 |
| 46 | 24 | 669-3345 | STARTER PAWL SPRING | 1 | 790-0162V-20 |
| 47 | 25 | 669-3395 | STARTER PULLEY | 1 | 798-04220-90 |
| 48 | 26 | 668-6558 | CRANK CASE ASS'Y | 1 | 072-04400-90 |
| 48 | 26 | 668-6559 | CRANK CASE ASS'Y | 1 | 072-04400-91 |
| 49 | 27 | 668-6715 | CRANK CASE GASKET | 1 | 090-04400-20 |
| 50 | 28 | 669-5637 | OIL SEAL UD15257 | 2 | 999-66152-564 |
| 51 | 29 | 669-5557 | BALL BEARING #6202, 35MM/OD | 2 | 999-61620-200 |
| 52 | 32 | 668-6470 | CRANK SHAFT SHIM 0.10 | V | 071-02007-21 |
| 52 | 32 | 668-6471 | CRANK SHAFT SHIM 0.15 | V | 071-02007-22 |
| 52 | 32 | 668-6472 | CRANK SHAFT SHIM 0.20 | V | 071-02007-23 |
| 52 | 32 | 668-6473 | CRANK SHAFT SHIM 0.30 | V | 071-02007-24 |
| 53 | 36 | 668-4786 | HEX. SOCKET HD. BOLT M5X30 S | 4 | 994-61050-304 |
| 54 | 51 | 668-7372 | MAGNETO ROTOR COMP. | 1 | 155-20538-80 |
| 55 | 52 | 669-5198 | WASHER 10 | 1 | 992-01100-011 |
| 56 | 54 | 669-5139 | SMALL NUT 10 | 1 | 991-11100-013 |
| 57 | 55 | 669-5333 | SCREW 5X10/S | 1 | 994-14050-101 |
| 58 | 60 | 668-7208 | AIR DEFLECTOR | 1 | 132-04400-20 |
| 59 | 66 | 668-6982 | FAN CASE | 1 | 112-04400-21 |
| 60 | 67 | 668-4668 | HEX.HOLE BOLT M5X20/S | 4 | 994-61050-204 |
| 61 | 69 | 668-8057 | PRIMARY CORD GROMMET | 1 | 203-11660-20 |

B19-03 ENGINE-1



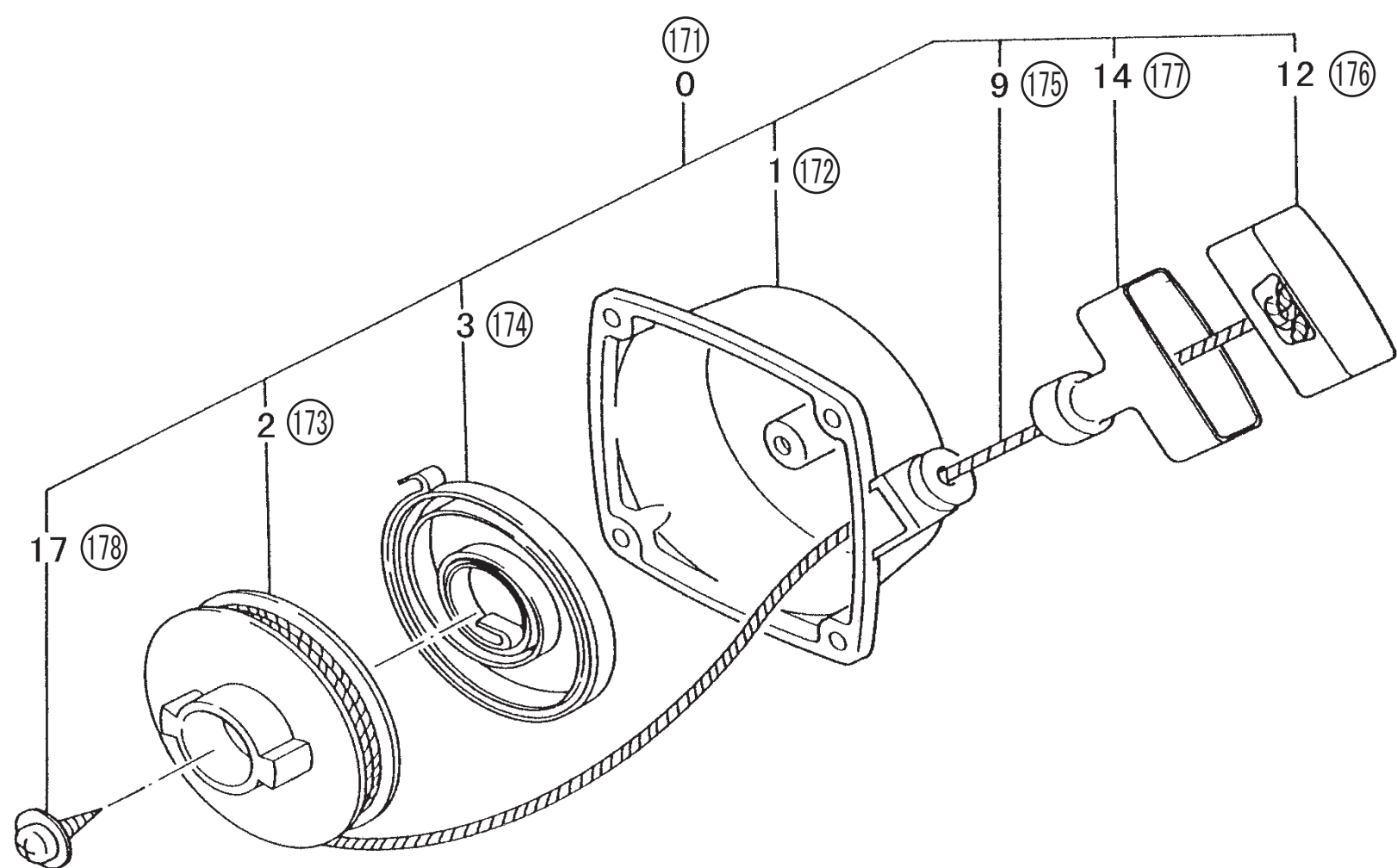
| HITACHI NUMBER | REF. NUMBER | PARTS NUMBER | DESCRIPTION | Q'TY | TANAKA PARTS NUMBER |
|------------------------|----------------|-----------------|------------------------------|------|------------------------|
| B19-03 ENGINE-1 | | | | | |
| 81 | 31 | 668-9885 | INLET MANIFOLD GASKET | 1 | 403-04300-20 |
| 82 | 32 | 668-9955 | CARB.INSULATOR SET, SPARE | 1 | 404-04300-90 |
| 83 | 33 | 668-9833 | CARBURETOR GASKET | 1 | 402-04300-20 |
| 84 | 34 | 669-0430 | COLLAR | 1 | 453-0637C-20 |
| 85 | 35 | 669-0802 | COLLAR | 1 | 470-01380-20 |
| 86 | 36 | 669-0099 | CLEANER BODY COMP. | 1 | 423-01380-82 |
| 87 | 37 | 669-1258 | CHOKE VALVE | 1 | 528-01380-21 |
| 88 | 38 | 669-0843 | BLOW OVER CHECK BOARD | 1 | 476-01700-20 |
| 89 | 39 | 669-6045 | CLEANER SPONGE | 1 | 446-01380-00 |
| 89 | 39 | 669-0352 | CLEANER ELEMENT 6T | 2 | 446-01380-21 |
| 90 | 40 | 668-4658 | WAVE WASHER 8 | 1 | 992-04080-031 |
| 91 | 41 | 669-0397 | CLEANER COVER ASS'Y | 1 | 452-01380-91 |
| 92 | 42 | 668-9737 | SPECIAL SCREW | 1 | 380-0637C-20 |
| 93 | 43 | 668-4660 | SCREW M5X60 | 2 | 990-11050-602 |
| 94 | 44 | 668-4662 | S.WASHER 5 | 2 | 992-10050-012 |
| 95 | 45 | 669-0476 | CARBURETOR SET, PN | 1 | 455-04400-90 |
| 96 | 46 | 669-3248 | STARTER PAWL WASHER | 2 | 786-00601-20 |
| 97 | 49 | 669-5425 | HEX. HOLE BOLT 5X25WS | 2 | 994-16050-253 |
| 98 | 62 | 669-2182 | TANK FIXING COLLAR | 1 | 649-01680-20 |
| 99 | 63 | 668-4618 | FUEL PIPE | 1 | 223-0097A-90 |
| 100 | 64 | 668-4619 | CLIP,6.3 DIA. | 1 | 680-00731-20 |
| 101 | 65 | 669-2273 | PUMP FILTER BODY ASS'Y | 1 | 675-01630-90 |
| 102 | 66 | 669-1539 | TANK WHT | 1 | 591-04413-22 |
| 102 | 66 | 669-1537 | TANK(EVAPO) | 1 | 591-0440F-20 |
| 103 | 68 | 668-4623 | COLLAR C | 3 | 659-04300-20 |
| 104 | 70 | 669-1768 | TANK CAP ASS'Y, BLACK | 1 | 595-0656B-90 |
| 105 | 72 | 669-1369 | AIR VENT RUBBER CAP | 1 | 561-00070-20 |
| 106 | 73 | 669-2171 | AIR VENT VALVE ASS'Y | 1 | 646-06612-90 |
| 107 | 74 | 669-1395 | AIR VENT PIPE | 1 | 565-04410-20 |
| 108 | 75 | 669-1389 | AIR VENT ASS'Y | 1 | 564-06611-90 |
| 109 | 76 | 668-4634 | HEX.HOLE BOLT 5X20/PS | 3 | 994-63050-204 |
| 109 | 76 | 668-4634 | HEX.HOLE BOLT 5X20/PS | 2 | 994-63050-204 |
| 110 | 77 | 669-4785 | ENGINE BED | 1 | 940-04300-20 |
| 111 | 78 | 668-4880 | FUEL PIPE 3X5X80 | 1 | 700-03005-08 |
| 112 | 79 | 669-2305 | CLIP 5.5 | 1 | 680-00206-20 |
| 113 | 80 | 668-8156 | FUEL PIPE GROMMET | 1 | 222-06300-20 |
| 114 | 86 | 668-4786 | HEX. SOCKET HD. BOLT M5X30 S | 1 | 994-61050-304 |
| 115 | 87 | 668-4918 | WASHER M5 | 1 | 992-01050-061 |
| 116 | 74-1 | 669-1394 | AIR VENT PIPE | 1 | 565-04400-21 |

B19-04 ENGINE-2



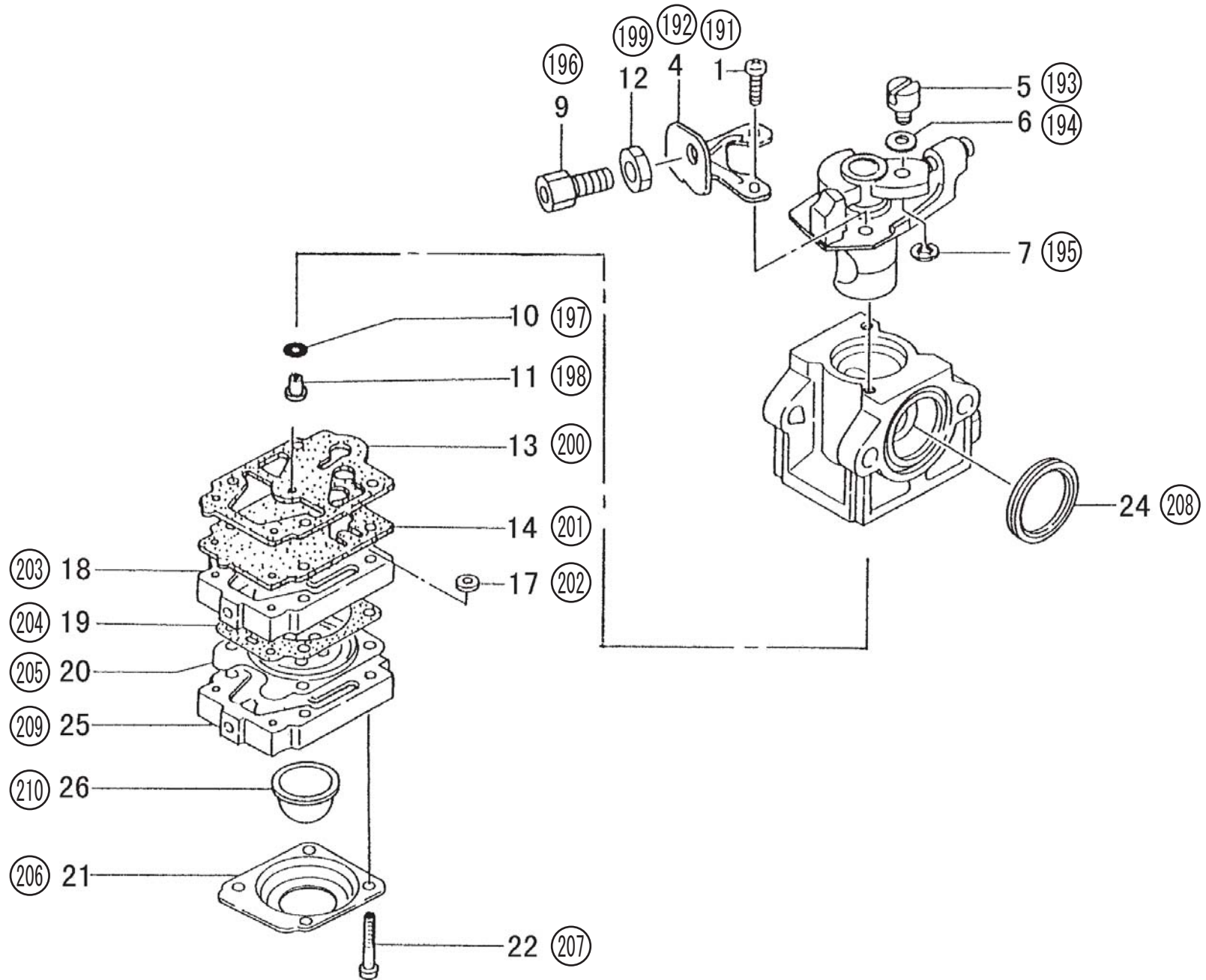
| HITACHI NUMBER | REF. NUMBER | PARTS NUMBER | DESCRIPTION | Q'TY | TANAKA PARTS NUMBER |
|------------------------|----------------|-----------------|-----------------------------------|------|------------------------|
| B19-04 ENGINE-2 | | | | | |
| 131 | 1 | 669-2783 | MUFFLER PROTECTOR | 1 | 738-0440A-21 |
| 132 | 3 | 668-4667 | HEX.HOLE BOLT M5X12/S | 1 | 994-61050-124 |
| 133 | 4 | 668-4903 | HEX.HOLE BOLT M5X16/S | 1 | 994-61050-164 |
| 134 | 5 | 669-5067 | HEX.HOLE BOLT 6X65 | 2 | 990-51060-653 |
| 135 | 6 | 668-4639 | WASHER 6 | 2 | 992-01060-011 |
| 136 | 7 | 669-2472 | MUFFLER SET, PN | 1 | 704-04400-90 |
| 137 | 8 | 668-4918 | WASHER M5 | 2 | 992-01050-061 |
| 137 | 8 | 668-4918 | WASHER M5 | 1 | 992-01050-061 |
| 138 | 10 | 669-2652 | TAIL PIPE | 1 | 721-04400-20 |
| 139 | 11 | 668-5109 | MACHINE SCREW (W/SP. WASHER) M4X8 | 1 | 994-34040-081 |
| 140 | 13 | 669-2696 | MUFFLER ARRESTOR | 1 | 732-04400-20 |
| 141 | 14 | 669-2741 | MUFFLER GASKET | 1 | 737-04230-20 |
| 142 | 16 | 668-7246 | HEAT SHIELD | 1 | 133-04400-21 |
| 143 | 23 | 668-4634 | HEX.HOLE BOLT 5X20/PS | 4 | 994-63050-204 |
| 143 | 23 | 668-4634 | HEX.HOLE BOLT 5X20/PS | 2 | 994-63050-204 |
| 144 | 24 | 668-8055 | PRIMARY CORD GROMMET | 1 | 203-10000-20 |
| 145 | 25 | 668-4709 | HEX.HOLE BOLT M5X25/S | 2 | 994-61050-254 |
| 146 | 26 | 668-4918 | WASHER M5 | 2 | 992-01050-061 |
| 147 | 81 | 668-9645 | CLUTCH WASHER B | 2 | 359-10112-20 |
| 148 | 82 | 668-8614 | CLUTCH ARM COMP. | 2 | 290-04200-81 |
| 149 | 83 | 668-9428 | CLUTCH SPRING | 1 | 342-04200-21 |
| 150 | 84 | 669-5203 | WAVE WASHER 10 | 2 | 992-04100-030 |
| 151 | 85 | 668-9632 | CLUTCH STEP BOLT | 2 | 357-04201-20 |

B19-05 RECOIL STARTER



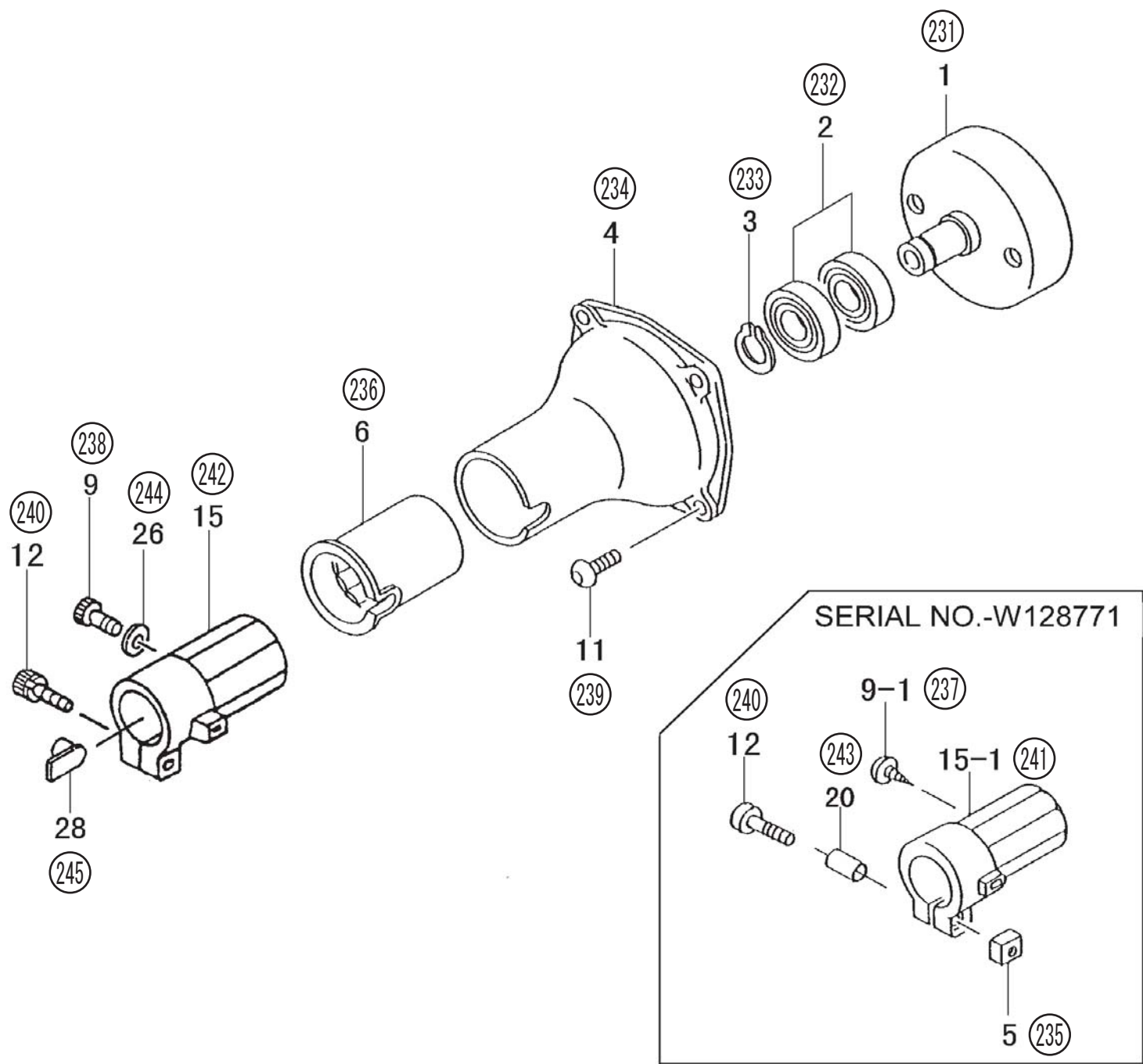
| HITACHI NUMBER | REF. NUMBER | PARTS NUMBER | DESCRIPTION | Q'TY | TANAKA PARTS NUMBER |
|-----------------------|----------------|-----------------|---------------------------|------|------------------------|
| B19-05 RECOIL STARTER | | | | | |
| 171 | 0 | 669-2970 | RECOIL STARTER BODY ASS'Y | 1 | 762-04220-90 |
| 172 | 1 | 669-3025 | RECOIL STARTER BODY COMP. | 1 | 772-04220-80 |
| 173 | 2 | 669-3007 | STARTER ROPE REEL | 1 | 769-04220-20 |
| 174 | 3 | 669-3114 | RECOIL SPRING | 1 | 779-04220-20 |
| 175 | 9 | 669-3165 | STARTER ROPE | 1 | 783-04270-20 |
| 176 | 12 | 669-3607 | STARTER HANDLE CAP | 1 | 835-04220-20 |
| 177 | 14 | 669-3232 | STARTER HANDLE | 1 | 785-04220-20 |
| 178 | 17 | 669-3634 | SET SCREW | 1 | 839-04220-20 |

B19-06 CARBURETOR



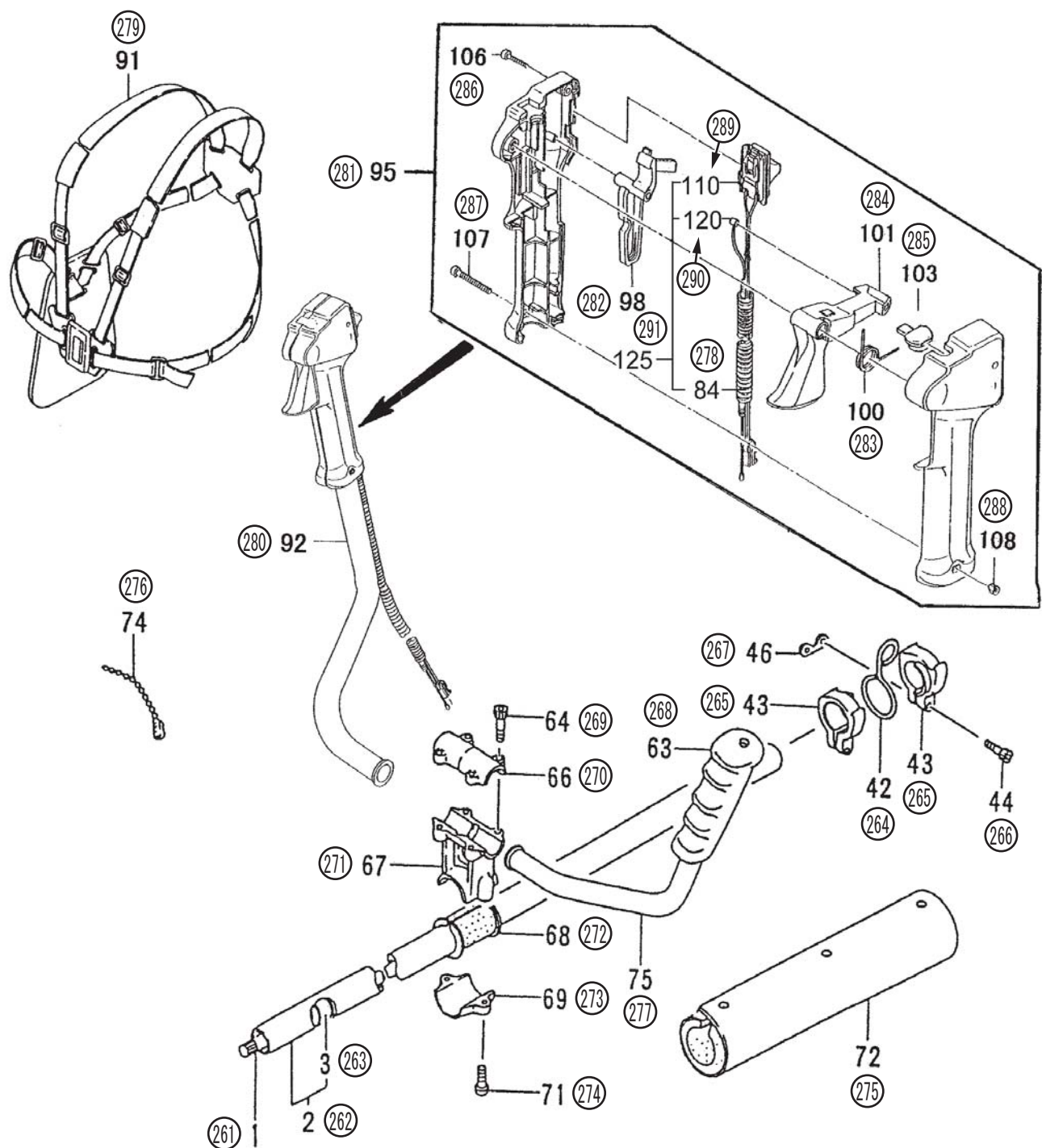
| HITACHI NUMBER | REF. NUMBER | PARTS NUMBER | DESCRIPTION | Q'TY | TANAKA PARTS NUMBER |
|--------------------------|----------------|-----------------|----------------------------|------|------------------------|
| B19-06 CARBURETOR | | | | | |
| 191 | 1 | 668-4870 | THROTTLE SET SCREW | 2 | 514-25100-20 |
| 192 | 4 | 668-4873 | CABLE ADJUSTER STAY | 1 | 544-25164-20 |
| 193 | 5 | 668-4697 | SWIVEL | 1 | 539-25120-20 |
| 194 | 6 | 668-4874 | THRUST WASHER | 1 | 549-25165-20 |
| 195 | 7 | 668-4696 | STOP RING | 1 | 489-25100-20 |
| 196 | 9 | 668-4871 | CABLE ADJUSTER | 1 | 614-25137-20 |
| 197 | 10 | 668-4695 | O-RING | 1 | 550-25100-20 |
| 198 | 11 | 669-6131 | MAIN JET, #44.5 | 1 | 599-200BW-44 |
| 199 | 12 | 668-4872 | LOCK NUT M6 | 1 | 991-01060-013 |
| 200 | 13 | 669-1457 | PUMP GASKET | 1 | 577-25100-20 |
| 201 | 14 | 668-4693 | PUMP DIAPHRAGM | 1 | 576-25100-20 |
| 202 | 17 | 668-4700 | INLET SCREEN | 1 | 578-25007-20 |
| 203 | 18 | 668-4879 | PUMP BODY COMP. | 1 | 575-25153-80 |
| 204 | 19 | 668-4691 | DIAPHRAGM GASKET | 1 | 475-25153-20 |
| 205 | 20 | 669-0827 | METERING DIAPHRAGM COMP. # | 1 | 474-25001-80 |
| 206 | 21 | 668-4688 | DIAPHRAGM COVER | 1 | 476-25151-20 |
| 207 | 22 | 668-4699 | SET SCREW | 4 | 548-25151-20 |
| 208 | 24 | 668-4875 | CLEANER PACKING | 1 | 431-0634C-20 |
| 209 | 25 | 668-4687 | PRIMING PUMP COMP. | 1 | 442-25151-80 |
| 210 | 26 | 668-4689 | PRIMING BODY | 1 | 447-25108-20 |

B19-07 CLUTCH CASE



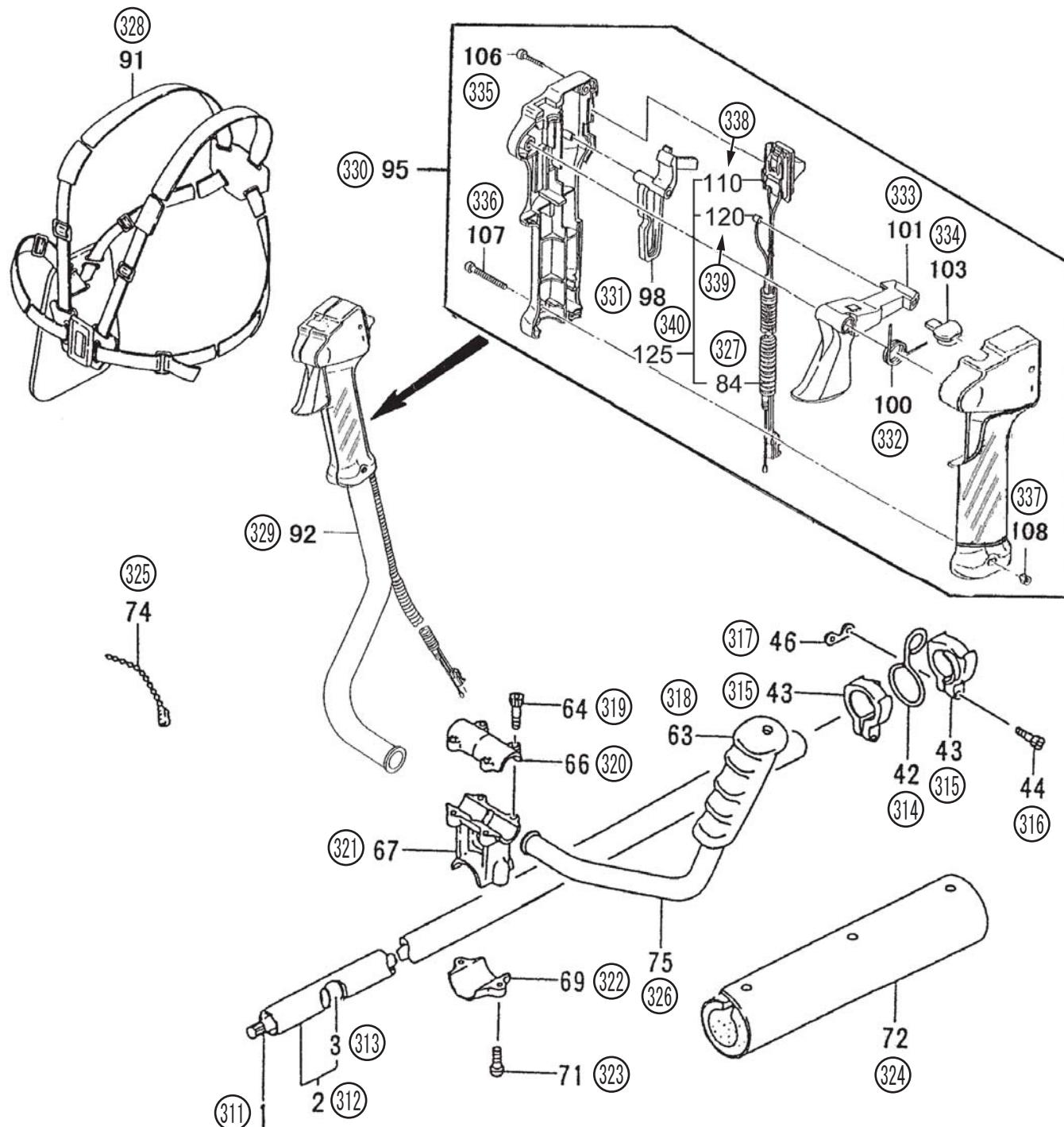
| HITACHI NUMBER | REF. NUMBER | PARTS NUMBER | DESCRIPTION | Q'TY | TANAKA PARTS NUMBER |
|--------------------|----------------|-----------------|---------------------------------|------|------------------------|
| B19-07 CLUTCH CASE | | | | | |
| 231 | 1 | 668-8584 | CLUTCH SHAFT COMP. | 1 | 289-04300-80 |
| 232 | 2 | 669-5559 | BALL BEARING #6202Z, 35MM/OD | 2 | 999-61620-202 |
| 233 | 3 | 669-5285 | STOP RING C-15, OUTER | 1 | 993-50015-002 |
| 234 | 4 | 668-9194 | CLUTCH CASE | 1 | 331-04300-20 |
| 235 | 5 | 669-5176 | SQUARE NUT 5 | 1 | 991-91050-001 |
| 236 | 6 | 669-1829 | CUSHION RUBBER | 1 | 599-04300-20 |
| 237 | 9-1 | 669-5111 | TAPPING SCREW 4.5X16 | 1 | 990-74045-164 |
| 238 | 9 | 669-5046 | HEX. HOLE BOLT 5X16 | 1 | 990-51050-163 |
| 239 | 11 | 668-5064 | HEX. SOCKET HD. BOLT (W/BUTTON) | 4 | 990-53060-203 |
| 240 | 12 | 669-5091 | HEX HOLE BOLT 5 X 25 | 1 | 990-54050-253 |
| 241 | 15-1 | NLA | No Longer Available | 1 | NLA |
| 242 | 15 | 668-9655 | PIPE HOLDER | 1 | 360-04300-21 |
| 243 | 20 | 668-6746 | COLLAR 6.3 X 18 | 1 | 096-04300-20 |
| 244 | 26 | 668-4918 | WASHER M5 | 1 | 992-01050-061 |
| 245 | 28 | 668-9664 | METAL FITTING | 1 | 361-00990-20 |

B19-08 THROTTLE LEVER/HANDLE(SERIAL NO.-W267011)



| HITACHI NUMBER | REF. NUMBER | PARTS NUMBER | DESCRIPTION | Q'TY | TANAKA PARTS NUMBER |
|---|----------------|-----------------|-------------------------------|------|------------------------|
| B19-08 THROTTLE LEVER/HANDLE (SERIAL NO.-W267011) | | | | | |
| 261 | 1 | 668-9471 | DRIVE SHAFT | 1 | 343-37850-20 |
| 262 | 2 | 668-9400 | DRIVE SHAFT COMP. | 1 | 341-37850-80 |
| 263 | 3 | 668-9522 | BUSH ASS'Y, 8 DIA. | 5 | 347-37850-90 |
| 264 | 42 | 668-9274 | LIFTING METAL, 90 DGR SWIVEL | 1 | 335-37307-20 |
| 265 | 43 | 668-9258 | LIFTING METAL COLLAR 26 | 2 | 334-37352-21 |
| 266 | 44 | 669-5501 | HEX. HOLE BOLT 5X30.P | 2 | 994-62050-304 |
| 267 | 46 | 668-9100 | SPECIAL NUT | 1 | 315-37304-20 |
| 268 | 63 | 668-4708 | HANDLE GRIP | 1 | 165-37590-20 |
| 269 | 64 | 668-4709 | HEX.HOLE BOLT M5X25/S | 4 | 994-61050-254 |
| 270 | 66 | 668-4710 | HANDLE BRACKET A | 1 | 506-37623-20 |
| 270 | 66 | 669-1136 | HANDLE BRACKET A | 1 | 506-37304-21 |
| 271 | 67 | 668-4711 | HANDLE BRACKET B | 1 | 507-37623-20 |
| 271 | 67 | 669-1161 | HANDLE BRACKET B, 26 DIA. | 1 | 507-38100-20 |
| 272 | 68 | 669-1187 | CUSHION RUBBER | 1 | 510-37352-20 |
| 273 | 69 | 668-4713 | HANDLE BRACKET C | 1 | 508-37623-20 |
| 273 | 69 | 669-1173 | HANDLE BRACKET C, 26 DIA. | 1 | 508-37587-20 |
| 274 | 71 | 668-4714 | HEX.HOLE BUTTON SCREW 6X25S | 2 | 994-81060-254 |
| 275 | 72 | 668-9285 | CUSHION PAD COMP. | 1 | 336-33411-82 |
| 276 | 74 | 668-4715 | CLAMP B. | 1 | 460-33111-20 |
| 277 | 75 | 669-1087 | LEFT HANDLE SK | 1 | 502-33674-21 |
| 278 | 84 | 668-7546 | PROTECTION TUBE | 1 | 164-07086-50 |
| 279 | 91 | 669-6184 | SHOULDER BELT ASS'Y OR | 1 | 746-37857-91 |
| 280 | 92 | 669-6091 | HANDLE RIGHT, BLACK | 1 | 501-38101-20 |
| 281 | 95 | 669-3765 | THROTTLE LEVER ASS'Y, 19 DIA. | 1 | 870-38401-90 |
| 282 | 98 | 668-4721 | SAFETY LEVER | 1 | 253-38400-20 |
| 283 | 100 | 668-4722 | RETURN SPRING | 1 | 832-38400-20 |
| 284 | 101 | 668-4723 | THROTTLE LEVER | 1 | 880-38401-20 |
| 285 | 103 | 668-4724 | BLIND PLUG | 1 | 322-38400-20 |
| 286 | 106 | 668-4725 | SCREW M4X20 (BLACK) | 2 | 993-46040-202 |
| 287 | 107 | 668-4726 | SCREW 5X30 (BLACK) | 1 | 994-31050-303 |
| 288 | 108 | 668-4727 | CONTAL NUT 5 | 1 | 991-01050-043 |
| 289 | 110 | 668-7460 | STOP SWITCH | 1 | 156-38401-80 |
| 290 | 120 | 669-4023 | THROTTLE WIRE | 1 | 887-38401-80 |
| 291 | 125 | 669-3979 | THROTTLE WIRE COMP. | 1 | 885-38401-80 |

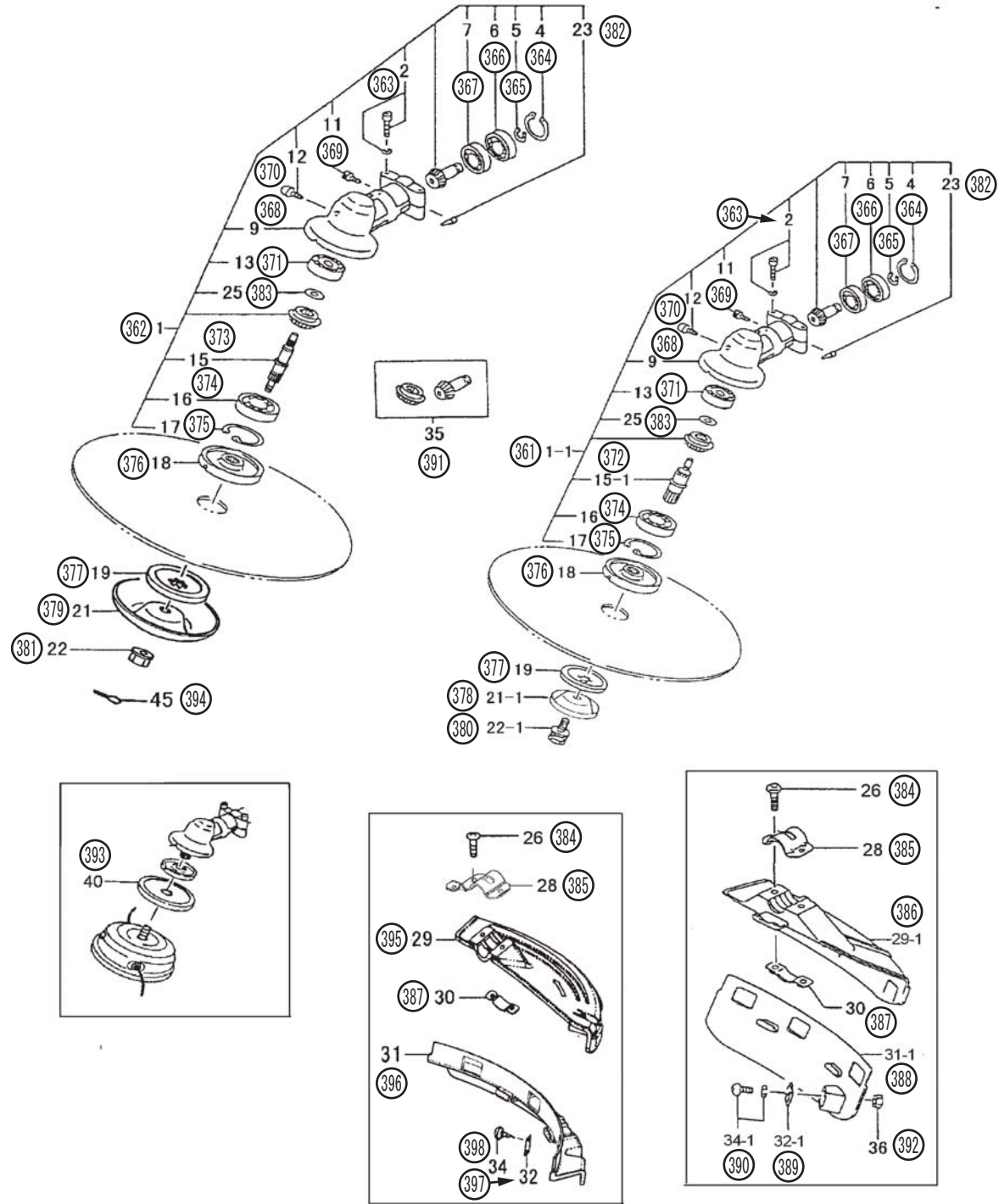
B19-09 THROTTLE LEVER/HANDLE(SERIAL NO.W267012-)



| HITACHI NUMBER | REF. NUMBER | PARTS NUMBER | DESCRIPTION | Q'TY | TANAKA PARTS NUMBER |
|--|----------------|-----------------|------------------------------|------|------------------------|
| B19-09 THROTTLE LEVER/HANDLE (SERIAL NO.W267012-) | | | | | |
| 311 | 1 | 668-9471 | DRIVE SHAFT | 1 | 343-37850-20 |
| 312 | 2 | 668-9400 | DRIVE SHAFT COMP. | 1 | 341-37850-80 |
| 313 | 3 | 668-9522 | BUSH ASS'Y, 8 DIA. | 5 | 347-37850-90 |
| 314 | 42 | 668-9274 | LIFTING METAL, 90 DGR SWIVEL | 1 | 335-37307-20 |
| 315 | 43 | 668-9258 | LIFTING METAL COLLAR 26 | 2 | 334-37352-21 |
| 316 | 44 | 669-5501 | HEX. HOLE BOLT 5X30.P | 2 | 994-62050-304 |
| 317 | 46 | 668-9100 | SPECIAL NUT | 1 | 315-37304-20 |
| 318 | 63 | 668-4708 | HANDLE GRIP | 1 | 165-37590-20 |
| 319 | 64 | 668-4709 | HEX.HOLE BOLT M5X25/S | 4 | 994-61050-254 |
| 320 | 66 | 668-4710 | HANDLE BRACKET A | 1 | 506-37623-20 |
| 321 | 67 | 669-1158 | HANDLE BRACKET | 1 | 507-37850-20 |
| 322 | 69 | 669-1174 | HANDLE BRACKET C, 26 DIA. | 1 | 508-37589-20 |
| 323 | 71 | 668-4714 | HEX.HOLE BUTTON SCREW 6X25S | 2 | 994-81060-254 |
| 324 | 72 | 668-9291 | HIP PAD | 1 | 336-37857-80 |
| 325 | 74 | 668-4715 | CLAMP B. | 1 | 460-33111-20 |
| 326 | 75 | 668-4716 | LEFT HANDLE | 1 | 502-37415-21 |
| 327 | 84 | 668-7546 | PROTECTION TUBE | 1 | 164-07086-50 |
| 328 | 91 | 669-6184 | SHOULDER BELT ASS'Y OR | 1 | 746-37857-91 |
| 329 | 92 | 669-6092 | RIGHT HANDLE | 1 | 501-38401-20 |
| 330 | 95 | 669-3766 | THROTTLE LEVER ASS'Y 19 | 1 | 870-38401-91 |
| 331 | 98 | 668-4721 | SAFETY LEVER | 1 | 253-38400-20 |
| 332 | 100 | 668-4722 | RETURN SPRING | 1 | 832-38400-20 |
| 333 | 101 | 668-4723 | THROTTLE LEVER | 1 | 880-38401-20 |
| 334 | 103 | 668-4724 | BLIND PLUG | 1 | 322-38400-20 |
| 335 | 106 | 668-4725 | SCREW M4X20 (BLACK) | 2 | 993-46040-202 |
| 336 | 107 | 668-4726 | SCREW 5X30 (BLACK) | 1 | 994-31050-303 |
| 337 | 108 | 668-4727 | CON TAL NUT 5 | 1 | 991-01050-043 |
| 338 | 110 | 668-7460 | STOP SWITCH | 1 | 156-38401-80 |
| 338 | 110 | 668-7461 | STOP SWITCH | 1 | 156-38401-81 |
| 339 | 120 | 669-4023 | THROTTLE WIRE | 1 | 887-38401-80 |
| 340 | 125 | 669-3979 | THROTTLE WIRE COMP. | 1 | 885-38401-80 |
| 340 | 125 | 669-3980 | THROTTLE WIRE COMP. | 1 | 885-38401-81 |

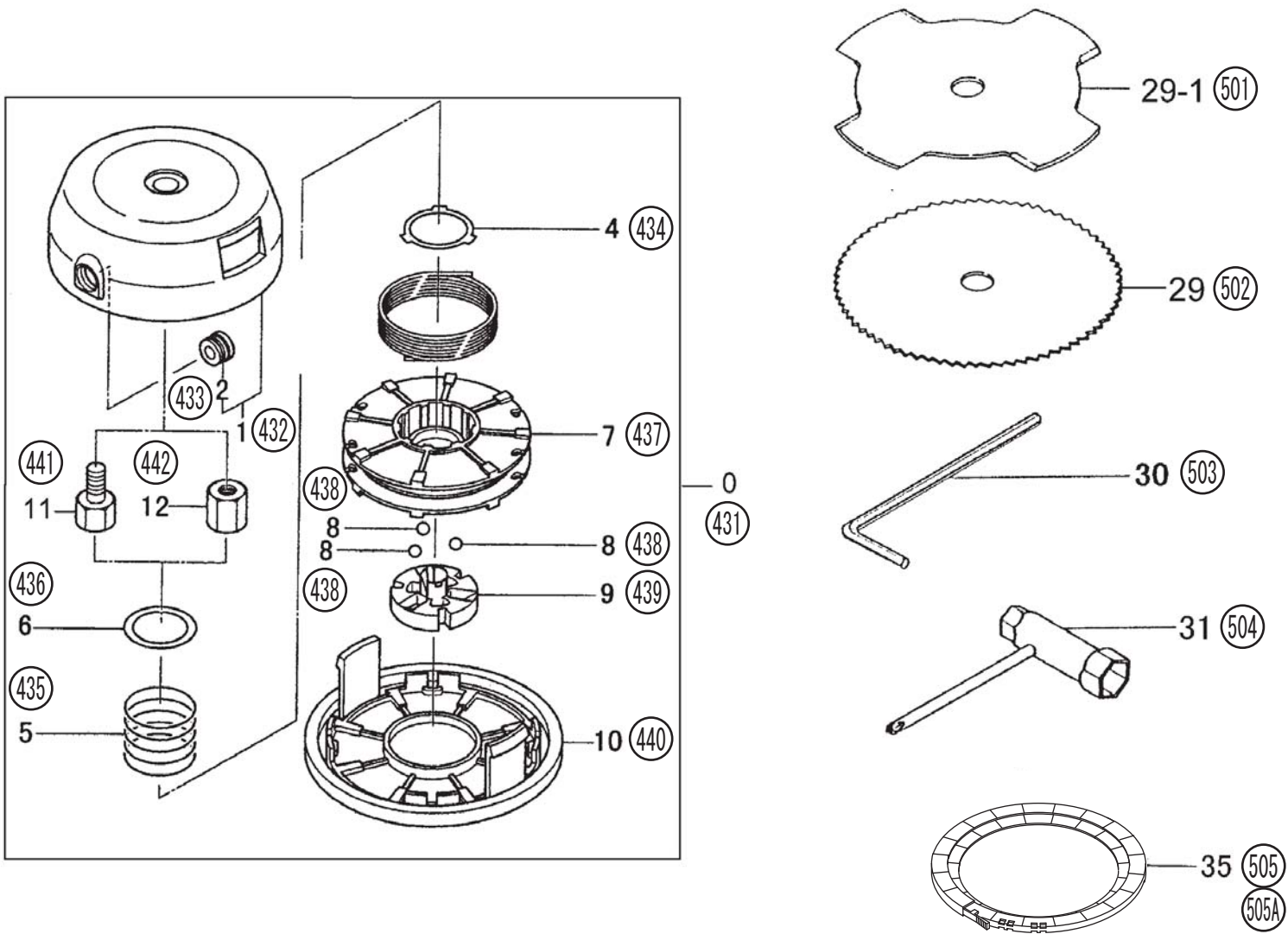
TBC430PF-9

B19-10 GEAR CASE



| HITACHI NUMBER | REF. NUMBER | PARTS NUMBER | DESCRIPTION | Q'TY | TANAKA PARTS NUMBER |
|-------------------|----------------|-----------------|-----------------------------|------|------------------------|
| B19-10 GEAR CASE | | | | | |
| 361 | 1-1 | 668-8737 | GEAR CASE ASS'Y, 26 DIA. | 1 | 300-37134-90 |
| 362 | 1 | 668-8784 | GEAR CASE ASSY, 26 DIA. | 1 | 300-37587-90 |
| 363 | 2 | 668-4709 | HEX.HOLE BOLT M5X25/S | 2 | 994-61050-254 |
| 364 | 4 | 668-4732 | STOP RING C-24,INNER | 1 | 993-51024-002 |
| 365 | 5 | 669-5281 | STOP RING C-9, OUTER | 1 | 993-50009-002 |
| 366 | 6 | 668-4735 | BALL BEARING 609Z ST | 1 | 999-61609-002 |
| 367 | 7 | 668-4734 | BALL BEARING 609 | 1 | 999-61609-000 |
| 368 | 9 | 668-8685 | GEAR CASE, SILVER | 1 | 300-3330B-20 |
| 369 | 11 | 669-5042 | HEX. HOLE BOLT 5X10 | 1 | 990-51050-103 |
| 370 | 12 | 669-5437 | PLUS HEAD BOLT 8X10 | 1 | 994-23080-100 |
| 371 | 13 | 669-5569 | BALL BEARING 628 ST | 1 | 999-61628-000 |
| 372 | 15-1 | 668-8932 | GEAR SHAFT | 1 | 304-37134-20 |
| 373 | 15 | 668-8945 | GEAR SHAFT | 1 | 304-38100-20 |
| 374 | 16 | 669-5554 | BALL BEARING 6201D, 32MM/OD | 1 | 999-61620-103 |
| 375 | 17 | 669-5295 | STOP RING C-32, INNER | 1 | 993-51032-002 |
| 376 | 18 | 668-9031 | CUTTER HOLDER, 12X10X1 | 1 | 310-38100-20 |
| 377 | 19 | 668-9050 | CUTTER HOLDER CAP, 12X10X1 | 1 | 311-37850-20 |
| 378 | 21-1 | 668-8990 | PROTECTION COVER B | 1 | 308-33410-20 |
| 379 | 21 | 668-8994 | PROTECTION COVER B | 1 | 308-37861-20 |
| 380 | 22-1 | 668-9062 | FIXING BOLT, L.H. | 1 | 312-33386-20 |
| 381 | 22 | 668-9072 | CUTTER FIXING NUT,L/H | 1 | 313-38100-20 |
| 382 | 23 | 668-9159 | GEAR CASE WASHER | 1 | 324-37350-20 |
| 383 | 25 | 668-6453 | SPECIAL WASHER 1.0 | 1 | 067-37134-20 |
| 384 | 26 | 668-4714 | HEX.HOLE BUTTON SCREW 6X25S | 2 | 994-81060-254 |
| 385 | 28 | 669-0315 | COVER BRACKET 26 | 1 | 442-38331-20 |
| 386 | 29-1 | 669-0270 | GUARD, CE | 1 | 441-38100-20 |
| 386 | 29-1 | 669-0242 | GUARD 26 CE | 1 | 441-37380-21 |
| 387 | 30 | 668-4748 | BLADE GUARD HOLDER | 1 | 445-37380-20 |
| 388 | 31-1 | 669-0375 | COVER GUARD | 1 | 447-38100-20 |
| 388 | 31-1 | 669-0372 | COVER GUARD | 1 | 447-37380-20 |
| 389 | 32-1 | 669-3386 | KNIFE | 1 | 797-37380-21 |
| 390 | 34-1 | 669-5334 | SCREW 5X12/S | 1 | 994-14050-121 |
| 391 | 35 | 668-8868 | GEAR-PINION SET, SPARE | 1 | 301-37134-00 |
| 392 | 36 | 668-4965 | NUT M5 | 1 | 991-01050-011 |
| 393 | 40 | 668-8986 | WINDING PROTECTOR COVER | 1 | 307-38100-20 |
| 394 | 45 | 668-9168 | SPLIT PIN SET(10 PCS/PACK) | 1 | 327-37180-90 |
| 395 | 29 | 669-0276 | GUARD 26CE | 1 | 441-38331-20 |
| 396 | 31 | 669-0376 | BLADE GUARD | 1 | 447-38331-20 |
| 397 | 32 | 668-4750 | KNIFE | 1 | 797-37714-20 |
| 398 | 34 | 668-4751 | TAPPING SCREW 4X14 | 1 | 993-48040-142 |

B19-11 NYLON HEAD/TOOLS



| HITACHI NUMBER | REF. NUMBER | PARTS NUMBER | DESCRIPTION | Q'TY | TANAKA PARTS NUMBER |
|-------------------------|----------------|-----------------|--------------------------------|------|------------------------|
| B19-11 NYLON HEAD/TOOLS | | | | | |
| 431 | 0 | 669-7146 | NYLON HEAD TH97L | 1 | 783-33840-91 |
| 431 | 0 | 669-3217 | NYLON HEAD TH97LM | 1 | 783-33842-91 |
| 432 | 1 | 669-3271 | CUTTING BODY ASS'Y | 1 | 786-33840-90 |
| 433 | 2 | 669-3328 | EYELET | 2 | 788-33670-21 |
| 434 | 4 | 669-3247 | ADJUSTMENT BASE | 1 | 785-33840-20 |
| 435 | 5 | 669-3377 | SPRING (SILVER) | 1 | 793-33910-20 |
| 436 | 6 | 669-3362 | ADJUSTMENT WASHER | 1 | 792-33004-20 |
| 437 | 7 | 669-3292 | CORD REEL BK | 1 | 787-33840-21 |
| 438 | 8 | 669-2271 | STEEL BALL | 3 | 673-35600-20 |
| 439 | 9 | 669-3358 | REEL SLIDER | 1 | 790-33810-20 |
| 440 | 10 | 669-3338 | CUTTING BODY CAP | 1 | 789-33840-20 |
| 441 | 11 | 668-9081 | MOUNTING BOLT, L-M8X1.25 | 1 | 314-33670-20 |
| 442 | 12 | 668-9098 | MOUNTING NUT, L-M10X1.25 | 1 | 315-33970-20 |
| | | | | | |
| | | | | | |
| 501 | 29-1 | 669-3434 | CUTTING BLADE 4TX255, TYPE M | 1 | 802-33398-20 |
| 502 | 29 | 669-3492 | BLADE 80 TEETH 255 | 1 | 809-37383-20 |
| 503 | 30 | 668-4813 | HEX. BAR WRENCH 4MM | 1 | 813-20000-20 |
| 504 | 31 | 668-4764 | BOX WRENCH (HEX. SOCKET 17/19) | 1 | 826-20000-80 |
| 505 | 35 | 668-4768 | CUTTER COVER | 2 | 615-37224-20 |