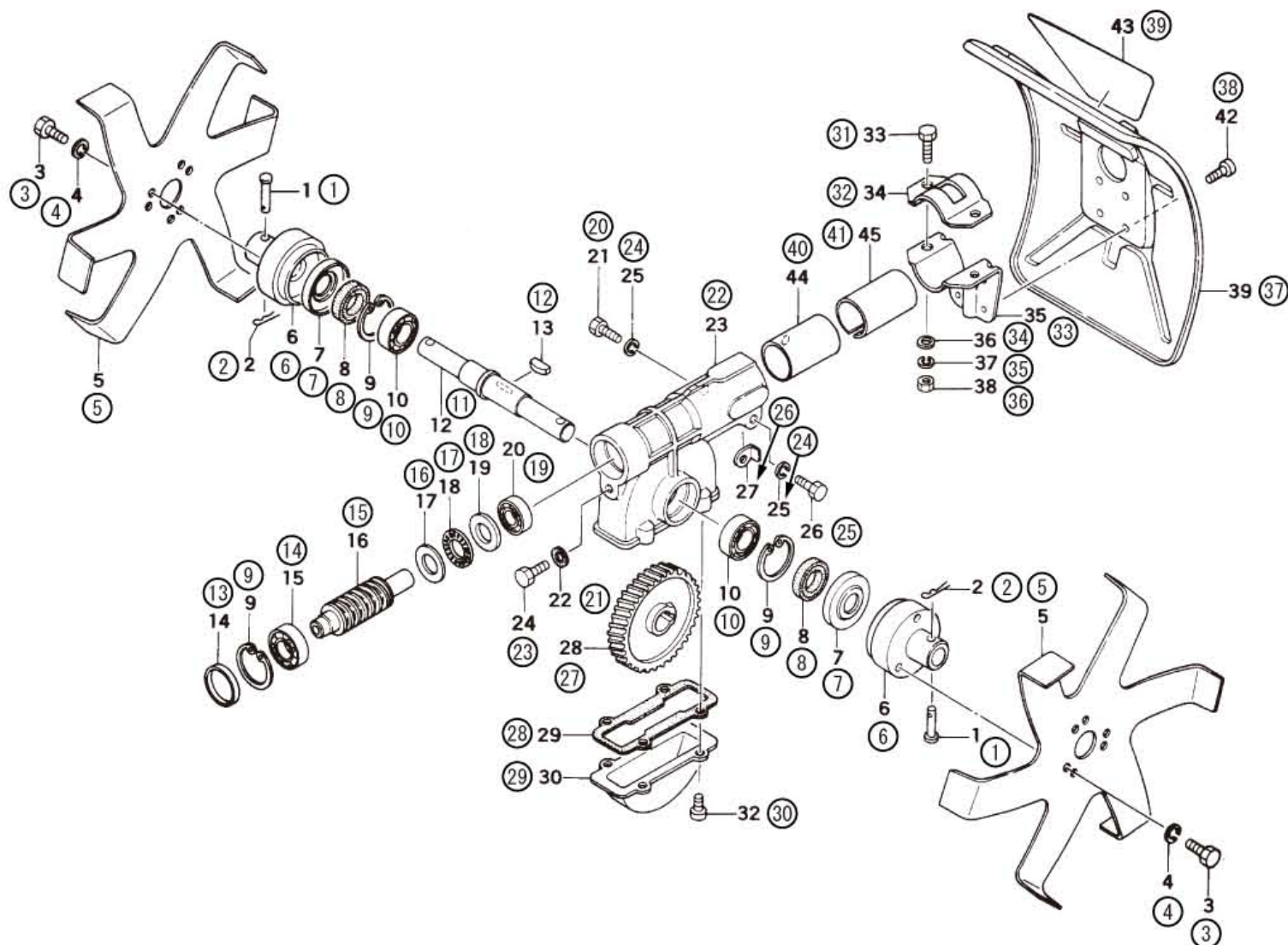


S50-01 MINI-CULTI



HITACHI NUMBER	REF. NUMBER	PARTS NUMBER	DESCRIPTION	Q'TY	TANAKA PARTS NUMBER
S50-01 MINI-CULTI					
1	1	668-9818	LOCK PIN	2	400-39907-20
2	2	669-3558	SNAP PIN 8	2	821-32203-20
3	3	669-4982	BOLT 6X12	6	990-21060-121
4	4	669-5219	S.WASHER 6	6	992-10060-012
5	5	669-3557	CUTTER	2	820-39907-20
6	6	668-9035	CUTTER HOLDER	2	310-39907-20
7	7	668-8987	PROTECTION COVER	2	307-39907-20
8	8	669-5638	OIL SEAL UE15286	2	999-66152-832
9	9	668-4741	STOP RING C-28,INNER	3	993-51028-002
10	10	669-5583	BALL BEARING 6902, 28MM/OD	2	999-61690-200
11	12	668-8952	DRIVE SHAFT	1	304-39907-20
12	13	668-7078	WOOD-RUFF KEY 5X22X7X14	1	120-32201-20
13	14	668-9152	GEAR CASE CAP	1	322-39907-20
14	15	669-5531	BALL BEARING 6001ZZ, 28MM/OD	1	999-61600-101
15	16	668-5586	WORM SHAFT	1	002-33130-20
16	17	669-5614	THRUST WASHER 1226	1	999-62122-669
17	18	669-5613	THRUST NEEDLE BRG 2X4.5	1	999-62122-668
18	19	668-9151	STEP WASHER	1	321-39907-20
19	20	669-5582	BALL BEARING 6901ZZ, 24MM/OD	1	999-61690-101
20	21	669-4982	BOLT 6X12	1	990-21060-121
21	22	669-2685	DRAIN GASKET	1	727-01040-20
22	23	668-8824	GEAR CASE	1	300-39909-20
23	24	669-4982	BOLT 6X12	1	990-21060-121
24	25	669-5219	S.WASHER 6	2	992-10060-012
25	26	669-4988	BOLT 6X25	1	990-21060-251
26	27	668-8309	SPACER	1	249-0630G-20
27	28	668-8886	GEAR WHEEL	1	301-39909-20
28	29	668-9116	GEAR CASE GASKET	1	318-39907-20
29	30	668-9153	GEAR CASE COVER	1	323-39907-20
30	32	669-5333	SCREW 5X10/S	4	994-14050-101
31	33	669-4985	BOLT 6X18	2	990-21060-181
32	34	669-0303	COVER BRACKET, 26 DIA.	1	442-37325-20
33	35	669-0337	COVER HOLDER	1	445-33140-20
34	36	669-5183	SMALL WASHER 6	2	992-00060-011
35	37	669-5219	S.WASHER 6	2	992-10060-012
36	38	668-4792	NUT M6	2	991-01060-011
37	39	669-0279	SAFETY COVER	1	441-39907-20
38	42	669-5384	SCREW 5X14/PS	4	994-15050-141
39	43	669-4329	NAME PLATE, TMC200	1	906-39909-20
40	44	668-9530	COLLAR B	1	348-33130-20
41	45	668-8629	COLLAR	1	294-39909-20

形 名

TMC200