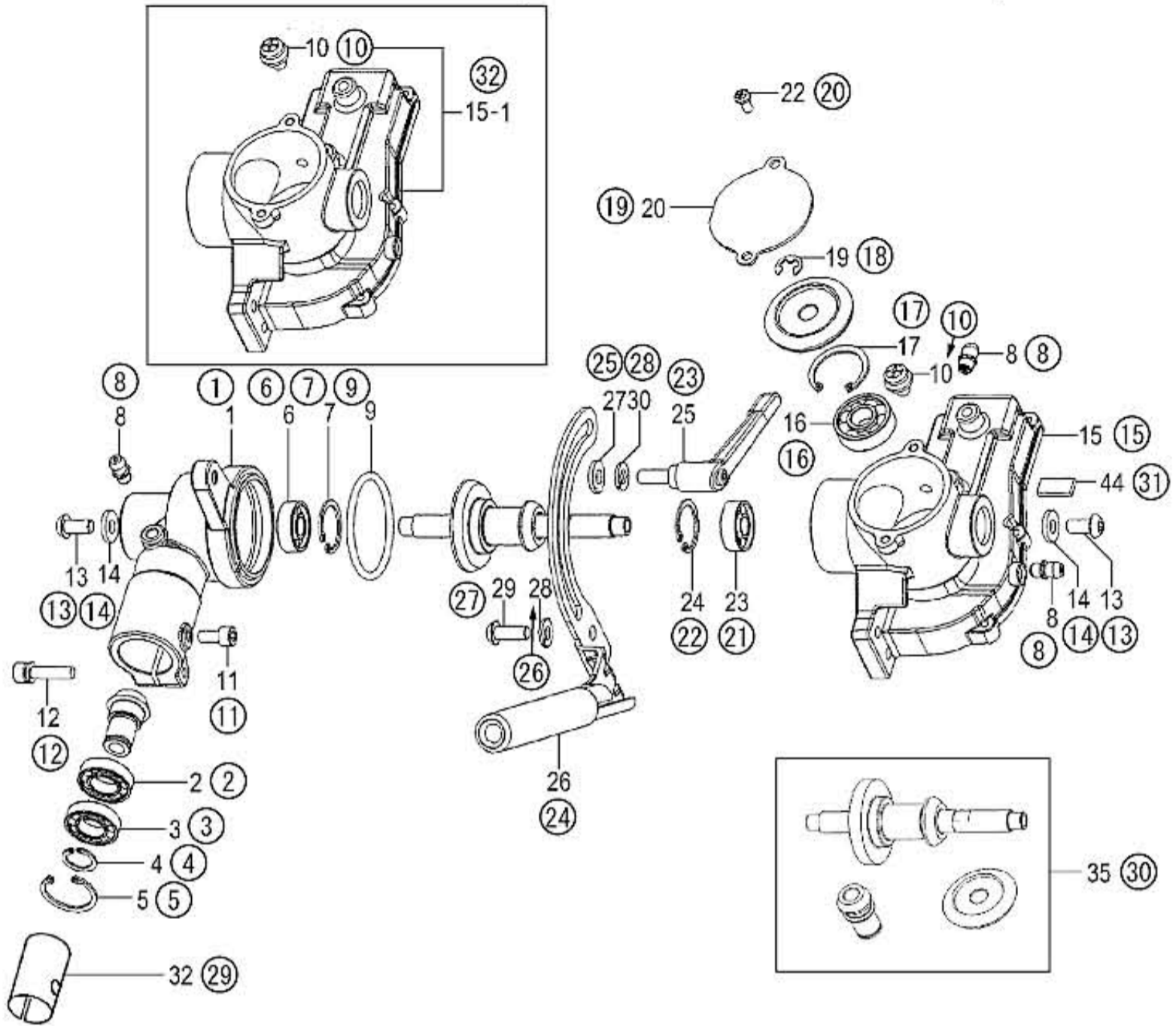


H14-01 GEAR CASE (SERIAL No. - V258936)

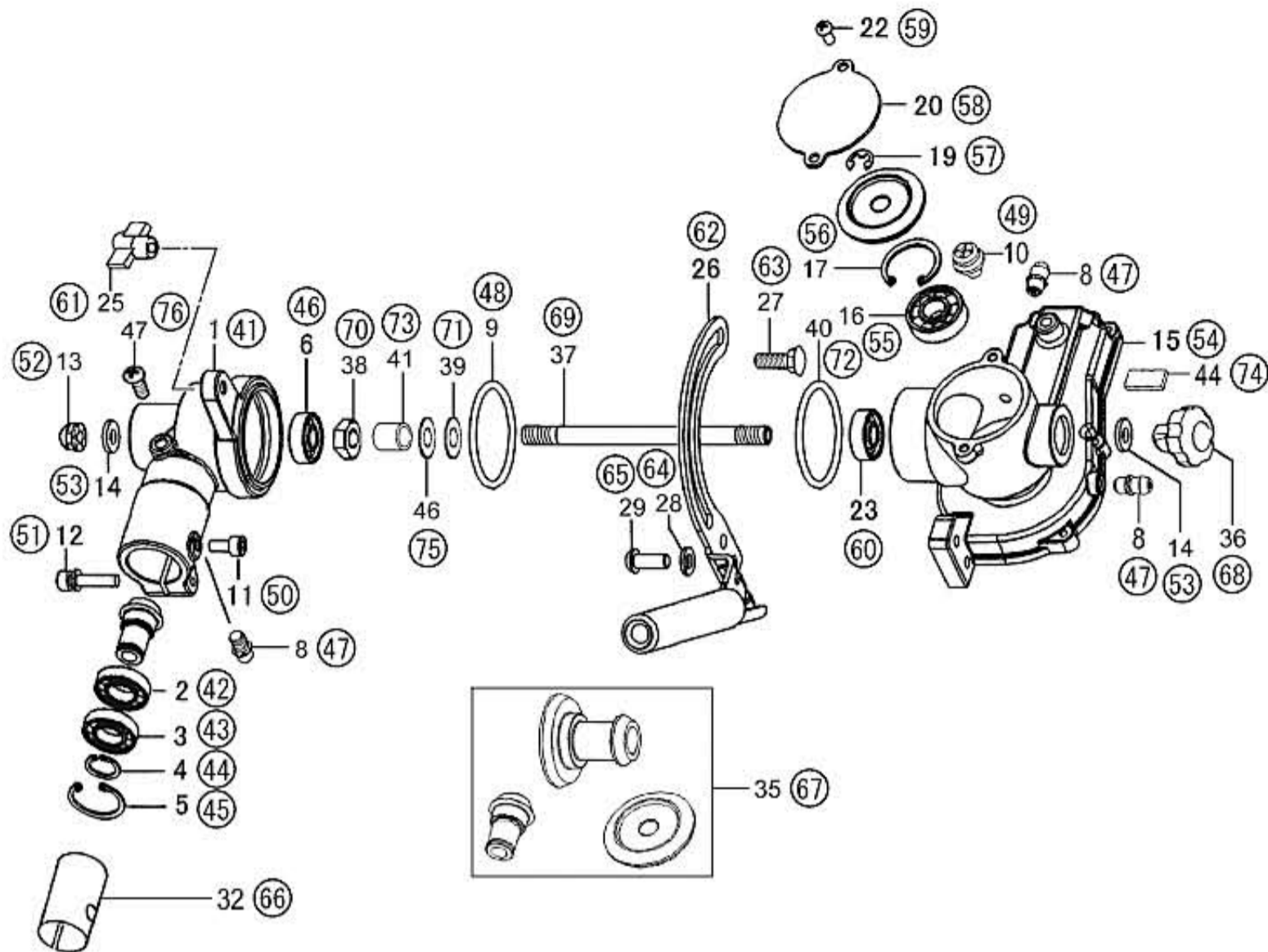


HITACHI NUMBER	REF. NUMBER	PARTS NUMBER	DESCRIPTION	Q'TY	TANAKA PARTS NUMBER
H14-01 GEAR CASE (SERIAL No. - V258936)					
1	1	668-8650	GEAR CASE A, 26 DIA.	1	300-32285-21
2	2	669-5582	BALL BEARING 6901ZZ, 24MM/OD	1	999-61690-101
3	3	669-5582	BALL BEARING 6901ZZ, 24MM/OD	1	999-61690-101
4	4	669-5302	STOP RING S-12, OUTER	1	993-52012-002
5	5	668-4732	STOP RING C-24, INNER	1	993-51024-002
6	6	669-5546	BALL BEARING #608Z, 22MM/OD	1	999-61608-002
7	7	669-5293	STOP RING C-22, INNER	1	993-51022-002
8	8	668-8643	GREASE NIPPLE COMP.	3	300-32250-80
9	9	669-5678	O RING P-41	1	999-67041-000
10	10	669-5322	SCREW 6X10P	1	994-13060-101
11	11	669-5042	HEX. HOLE BOLT 5X10	1	990-51050-103
12	12	669-5492	HEX. HOLE BOLT 5X22/S	1	994-61050-224
13	13	669-5078	HEX. HOLE BOLT 6X12	2	990-53060-125
14	14	668-4822	SPECIAL WASHER B	2	871-32600-20
32	15-1	669-5980	GEAR CASE B SET	1	301-32282-90
15	15	668-8834	GEAR CASE B	1	301-32286-20
16	16	669-5528	BALL BEARING #6000DD, 26MM/OD	1	999-61600-004
17	17	669-5294	STOP RING C-26, INNER	1	993-51026-002
18	19	669-5310	STOP RING E-6	1	993-55060-000
19	20	668-9167	GEAR CASE COVER A	1	327-32280-20
20	22	669-4861	SCREW 4X8	2	990-11040-081
21	23	669-5546	BALL BEARING #608Z, 22MM/OD	1	999-61608-002
22	24	669-5293	STOP RING C-22, INNER	1	993-51022-002
23	25	668-6253	HANDLE COMP.	1	049-32280-80
24	26	668-5972	SLIDE GUIDE COMP., W/GRIP	1	033-32280-81
25	27	668-4822	SPECIAL WASHER B	1	871-32600-20
26	28	668-4826	S.WASHER 6	2	992-10060-062
27	29	669-5079	HEX HOLE BUTTON SCREW 6X15	2	990-53060-153
28	30	668-4826	S.WASHER 6	1	992-10060-062
29	32	668-9530	COLLAR B	1	348-33130-20
30	35	668-8893	GEAR SET	1	302-32286-01
31	44	668-6659	GREASE SEAL B	1	086-32286-20

形 名

TPH200/210

H14-02 GEAR CASE (SERIAL No.V258937 - W040350)

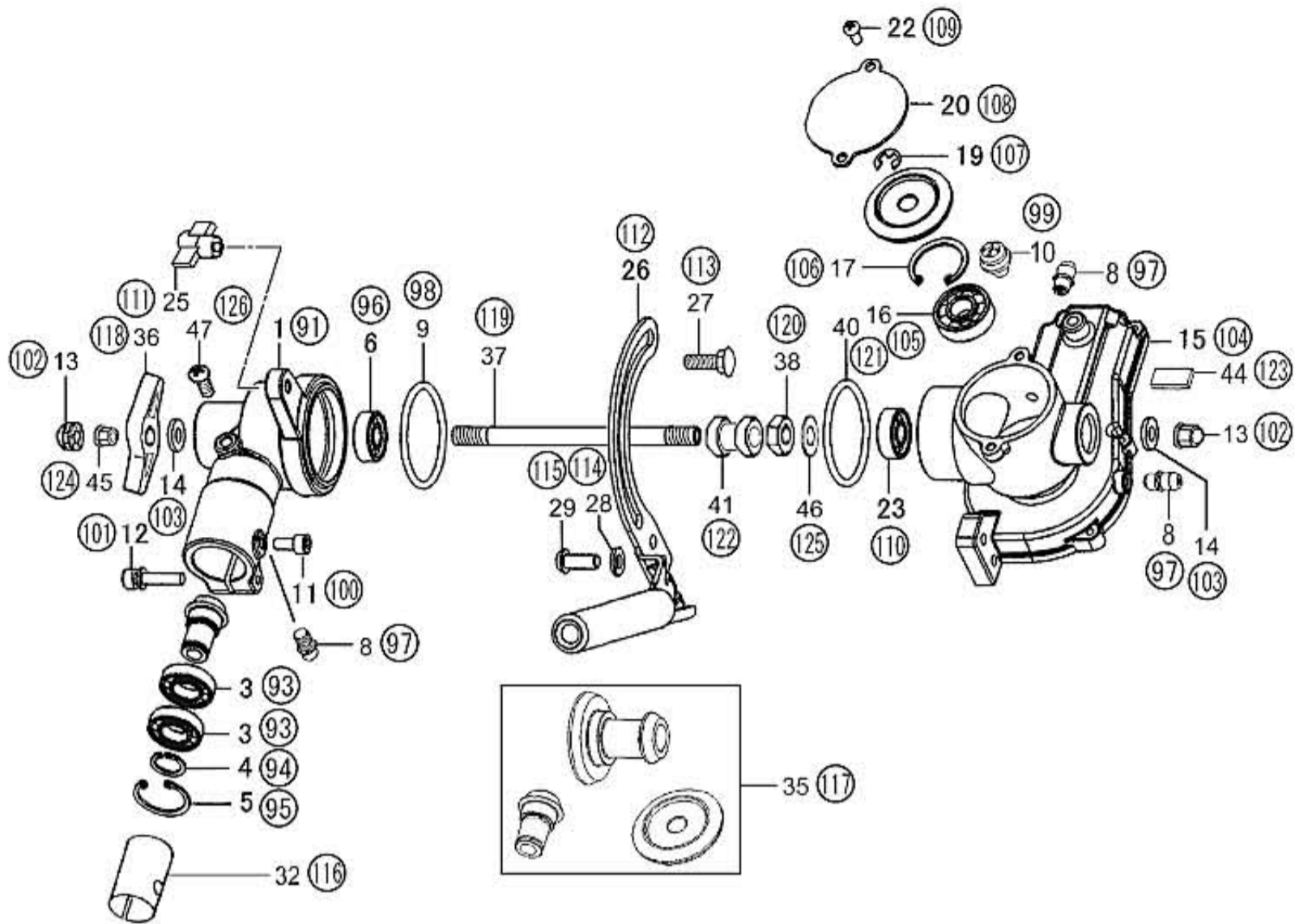


HITACHI NUMBER	REF. NUMBER	PARTS NUMBER	DESCRIPTION	Q'TY	TANAKA PARTS NUMBER
H14-02 GEAR CASE (SERIAL No. V258937 - W040350)					
41	1	668-8650	GEAR CASE A, 26 DIA.	1	300-32285-21
42	2	669-5582	BALL BEARING 6901ZZ, 24MM/OD	1	999-61690-101
43	3	669-5582	BALL BEARING 6901ZZ, 24MM/OD	1	999-61690-101
44	4	669-5302	STOP RING S-12, OUTER	1	993-52012-002
45	5	668-4732	STOP RING C-24, INNER	1	993-51024-002
46	6	669-5546	BALL BEARING #608Z, 22MM/OD	1	999-61608-002
47	8	668-8643	GREASE NIPPLE COMP.	3	300-32250-80
48	9	669-5678	O RING P-41	1	999-67041-000
49	10	669-5322	SCREW 6X10P	1	994-13060-101
50	11	669-5042	HEX. HOLE BOLT 5X10	1	990-51050-103
51	12	669-5492	HEX. HOLE BOLT 5X22/S	1	994-61050-224
52	13	669-5149	FLANGE BLIND NUT 8	1	991-44080-022
53	14	668-5856	SPECIAL WASHER	2	027-31800-20
54	15	668-8834	GEAR CASE B	1	301-32286-20
55	16	669-5528	BALL BEARING #6000DD, 26MM/OD	1	999-61600-004
56	17	669-5294	STOP RING C-26, INNER	1	993-51026-002
57	19	669-5310	STOP RING E-6	1	993-55060-000
58	20	668-9167	GEAR CASE COVER A	1	327-32280-20
59	22	669-4861	SCREW 4X8	2	990-11040-081
60	23	669-5546	BALL BEARING #608Z, 22MM/OD	1	999-61608-002
61	25	669-1199	HANDLE KNOB A COMP.	1	512-32285-80
62	26	668-5972	SLIDE GUIDE COMP., W/GRIP	1	033-32280-81
63	27	668-7990	SPECIAL BOLT	1	196-32285-20
64	28	668-4826	S.WASHER 6	2	992-10060-062
65	29	669-5079	HEX HOLE BUTTON SCREW 6X15	2	990-53060-153
66	32	668-9530	COLLAR B	1	348-33130-20
67	35	668-8891	GEAR SET	1	302-32282-00
68	36	669-1212	HANDLE KNOB B ASS'Y	1	513-32282-90
69	37	668-8958	GEAR SHAFT	1	305-32282-22
70	38	668-4612	HEX.NUT M8	1	991-01080-011
71	39	668-6428	DRIVE SHAFT SHIM 0.5	V	063-35100-20
71	39	668-6435	DRIVE SHAFT SHIM 0.1	V	064-35100-20
71	39	668-6440	DRIVE SHAFT SHIM 1.5	1	065-35100-20
71	39	668-6449	DRIVE SHAFT SHIM 0.2	V	066-35100-20
72	40	668-6483	SHIM	V	071-32282-21
72	40	668-6484	SHIM	V	071-32282-22
72	40	668-6485	SHIM	V	071-32282-23
73	41	668-6750	COLLAR	1	096-32282-20
74	44	668-6659	GREASE SEAL B	1	086-32286-20
75	46	668-6453	SPECIAL WASHER 1.0	1	067-37134-20
76	47	669-5458	SCREW 6X8	1	994-31060-081

形 名

TPH200/210

H14-03 GEAR CASE (SERIAL No.W040351 - Z101320)



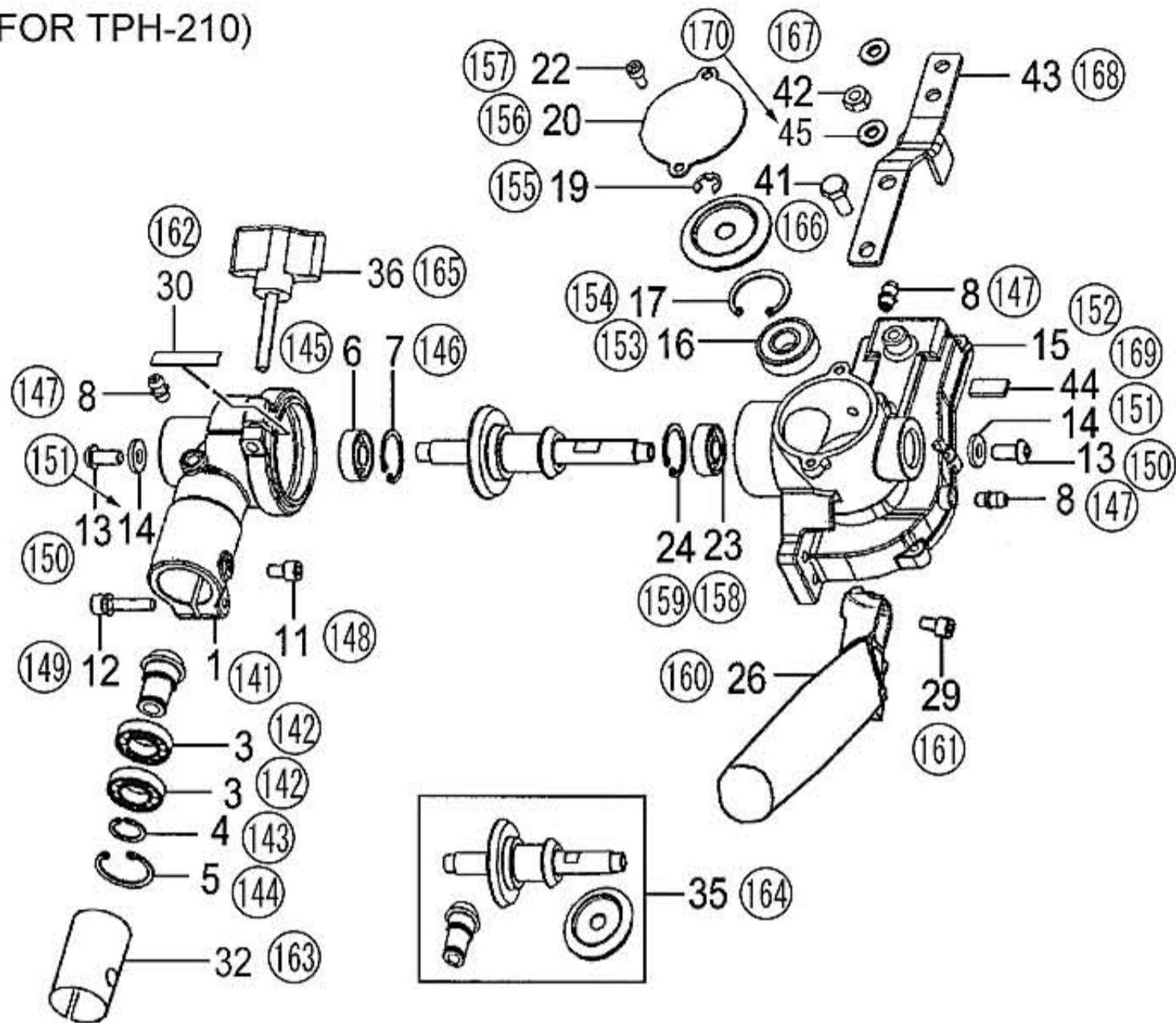
HITACHI NUMBER	REF. NUMBER	PARTS NUMBER	DESCRIPTION	Q'TY	TANAKA PARTS NUMBER
H14-03 GEAR CASE (SERIAL No. W040351 - Z101320)					
91	1	668-8650	GEAR CASE A, 26 DIA.	1	300-32285-21
93	3	669-5582	BALL BEARING 6901ZZ, 24MM/OD	2	999-61690-101
94	4	669-5302	STOP RING S-12, OUTER	1	993-52012-002
95	5	668-4732	STOP RING C-24, INNER	1	993-51024-002
96	6	669-5547	BALL BEARING 608 ZZ C3	1	999-61608-013
97	8	668-8643	GREASE NIPPLE COMP.	3	300-32250-80
98	9	669-5678	O RING P-41	1	999-67041-000
99	10	669-5322	SCREW 6X10P	1	994-13060-101
100	11	669-5042	HEX. HOLE BOLT 5X10	1	990-51050-103
101	12	669-5492	HEX. HOLE BOLT 5X22/S	1	994-61050-224
102	13	669-5149	FLANGE BLIND NUT 8	2	991-44080-022
103	14	668-5856	SPECIAL WASHER	2	027-31800-20
104	15	668-8834	GEAR CASE B	1	301-32286-20
105	16	669-5528	BALL BEARING #6000DD, 26MM/OD	1	999-61600-004
106	17	669-5294	STOP RING C-26, INNER	1	993-51026-002
107	19	669-5310	STOP RING E-6	1	993-55060-000
108	20	668-9167	GEAR CASE COVER A	1	327-32280-20
109	22	669-4861	SCREW 4X8	2	990-11040-081
110	23	669-5547	BALL BEARING 608 ZZ C3	1	999-61608-013
111	25	669-1199	HANDLE KNOB A COMP.	1	512-32285-80
112	26	668-5972	SLIDE GUIDE COMP., W/GRIP	1	033-32280-81
113	27	668-7990	SPECIAL BOLT	1	196-32285-20
114	28	668-4826	S.WASHER 6	2	992-10060-062
115	29	669-5079	HEX HOLE BUTTON SCREW 6X15	2	990-53060-153
116	32	668-9530	COLLAR B	1	348-33130-20
117	35	668-8891	GEAR SET	1	302-32282-00
118	36	669-1201	HANDLE KNOB	1	512-32298-20
119	37	668-8958	GEAR SHAFT	1	305-32282-22
120	38	668-9753	SPECIAL NUT	1	381-32289-20
121	40	668-6483	SHIM	V	071-32282-21
121	40	668-6484	SHIM	V	071-32282-22
121	40	668-6485	SHIM	V	071-32282-23
122	41	668-6752	COLLOR 26.8	1	096-32289-20
123	44	668-6659	GREASE SEAL B	1	086-32286-20
124	45	668-5166	NUT	1	121-32530-20
125	46	669-2945	WASHER 1.6 W	1	760-32282-20
126	47	669-5458	SCREW 6X8	1	994-31060-081

形 名

TPH200/210

H14-04 GEAR CASE (SERIAL No.Z101321 -)

(FOR TPH-210)

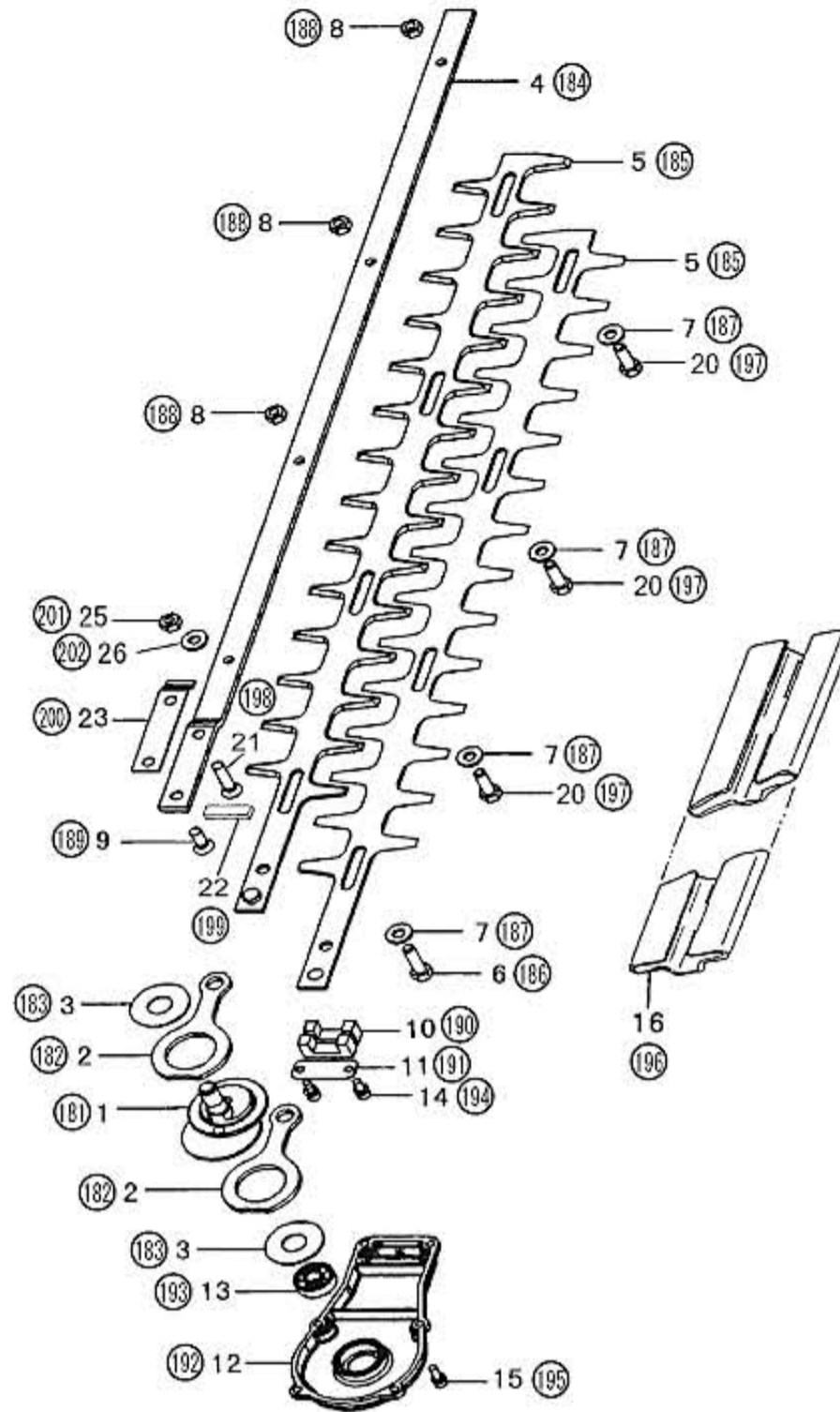


HITACHI NUMBER	REF. NUMBER	PARTS NUMBER	DESCRIPTION	Q'TY	TANAKA PARTS NUMBER
H14-04 GEAR CASE SERIAL No. Z1013201 -)					
141	1	668-8642	GEAR CASE A	1	300-32230-21
142	3	669-5582	BALL BEARING 6901ZZ, 24MM/OD	2	999-61690-101
143	4	669-5302	STOP RING S-12, OUTER	1	993-52012-002
144	5	668-4732	STOP RING C-24, INNER	1	993-51024-002
145	6	669-5547	BALL BEARING 608 ZZ C3	1	999-61608-013
146	7	669-5293	STOP RING C-22, INNER	1	993-51022-002
147	8	668-8643	GREASE NIPPLE COMP.	3	300-32250-80
148	11	669-5042	HEX. HOLE BOLT 5X10	1	990-51050-103
149	12	668-4709	HEX.HOLE BOLT M5X25/S	1	994-61050-254
150	13	669-5078	HEX. HOLE BOLT 6X12	2	990-53060-125
151	14	668-4822	SPECIAL WASHER B	2	871-32600-20
152	15	668-8834	GEAR CASE B	1	301-32286-20
153	16	669-5528	BALL BEARING #6000DD, 26MM/OD	1	999-61600-004
154	17	669-5294	STOP RING C-26, INNER	1	993-51026-002
155	19	669-5310	STOP RING E-6	1	993-55060-000
156	20	668-9167	GEAR CASE COVER A	1	327-32280-20
157	22	669-5035	HEX HOLE BOLT 4X8	2	990-51040-085
158	23	669-5547	BALL BEARING 608 ZZ C3	1	999-61608-013
159	24	669-5293	STOP RING C-22, INNER	1	993-51022-002
160	26	668-8089	HANDLE	1	210-32286-20
161	29	669-5079	HEX HOLE BUTTON SCREW 6X15	2	990-53060-153
162	30	668-6669	GREASE SEALED	1	088-32287-20
163	32	668-9530	COLLAR B	1	348-33130-20
164	35	668-8893	GEAR SET	1	302-32286-01
165	36	669-1200	HANDLE KNOB A COMP.	1	512-32286-80
166	41	669-5016	PLUS BOLT 6X14	1	990-23060-141
167	42	668-4835	HEX.NUT 6	1	991-01060-041
167	42	669-5175	NUT 6 UPS-P	1	991-87060-001
168	43	669-0744	SUPPORT PLATE	1	462-32286-20
169	44	668-6659	GREASE SEAL B	1	086-32286-20
170	45	668-4639	WASHER 6	1	992-01060-011

形 名

TPH200/210

H14-05 BLADE



HITACHI NUMBER	REF. NUMBER	PARTS NUMBER	DESCRIPTION	Q'TY	TANAKA PARTS NUMBER
H14-05 BLADE					
181	1	668-6790	CAM SHAFT COMP.	1	100-32282-81
182	2	668-6809	CAM ROD	2	101-33160-22
183	3	668-6611	CAM-ROD GUIDE PLATE	2	075-32280-20
184	4	668-7135	CUTTER GUIDE, 625MM	1	122-33160-21
184	4	668-7127	CUTTER GUIDE 625.5MM	1	122-32287-21
184	4	668-7125	CUTTER GUIDE 625.5MM	1	122-32286-21
185	5	668-7084	CUTTER A (591.5L)	2	120-33160-22
185	5	668-7079	CUTTER	2	120-32287-21
186	6	668-7160	CUTTER FIXING BOLT A	4	124-33202-21
186	6	668-7158	FIXING BOLT A M6	1	124-32287-20
187	7	668-7187	WASHER 7 BLACK	4	129-33202-20
188	8	668-7155	CUTTER FIXING NUT	4	123-3317A-20
188	8	669-5170	FLANGE NUT 6	4	991-82060-001
188	8	669-5170	FLANGE NUT 6	3	991-82060-001
189	9	669-5073	HEX HOLE FLUSH SCREW 6X16	2	990-52060-165
189	9	669-5073	HEX HOLE FLUSH SCREW 6X16	1	990-52060-165
190	10	668-6654	GREASE SEAL A	2	085-33160-20
190	10	668-6647	GREASE SEAL A	2	085-32286-20
191	11	668-6826	CAM-ROD HOLDING PLATE	1	105-32280-20
192	12	668-9172	GEAR CASE COVER B	1	328-32280-22
193	13	669-5547	BALL BEARING 608 ZZ C3	1	999-61608-013
194	14	669-5484	HEX. HOLE BOLT 4X10S	2	994-61040-104
195	15	668-4595	HEX.HOLE BOLT M4X12/S	6	994-61040-124
196	16	668-7299	CUTTER COVER	1	138-33160-20
196	16	668-7301	CUTTER COVER	1	138-33168-20
197	20	668-7162	CUTTER FIXING BOLT B	3	125-32287-20
198	21	669-5075	HEX. HOLE FLUSH BOLT 6X25	1	990-52060-255
199	22	668-6666	GREASE SEAL B	1	087-32286-20
200	23	668-8633	SPACER	1	296-32286-20
201	25	669-5175	NUT 6 UPS-P	1	991-87060-001
202	26	668-4639	WASHER 6	1	992-01060-011

形 名

TPH200/210