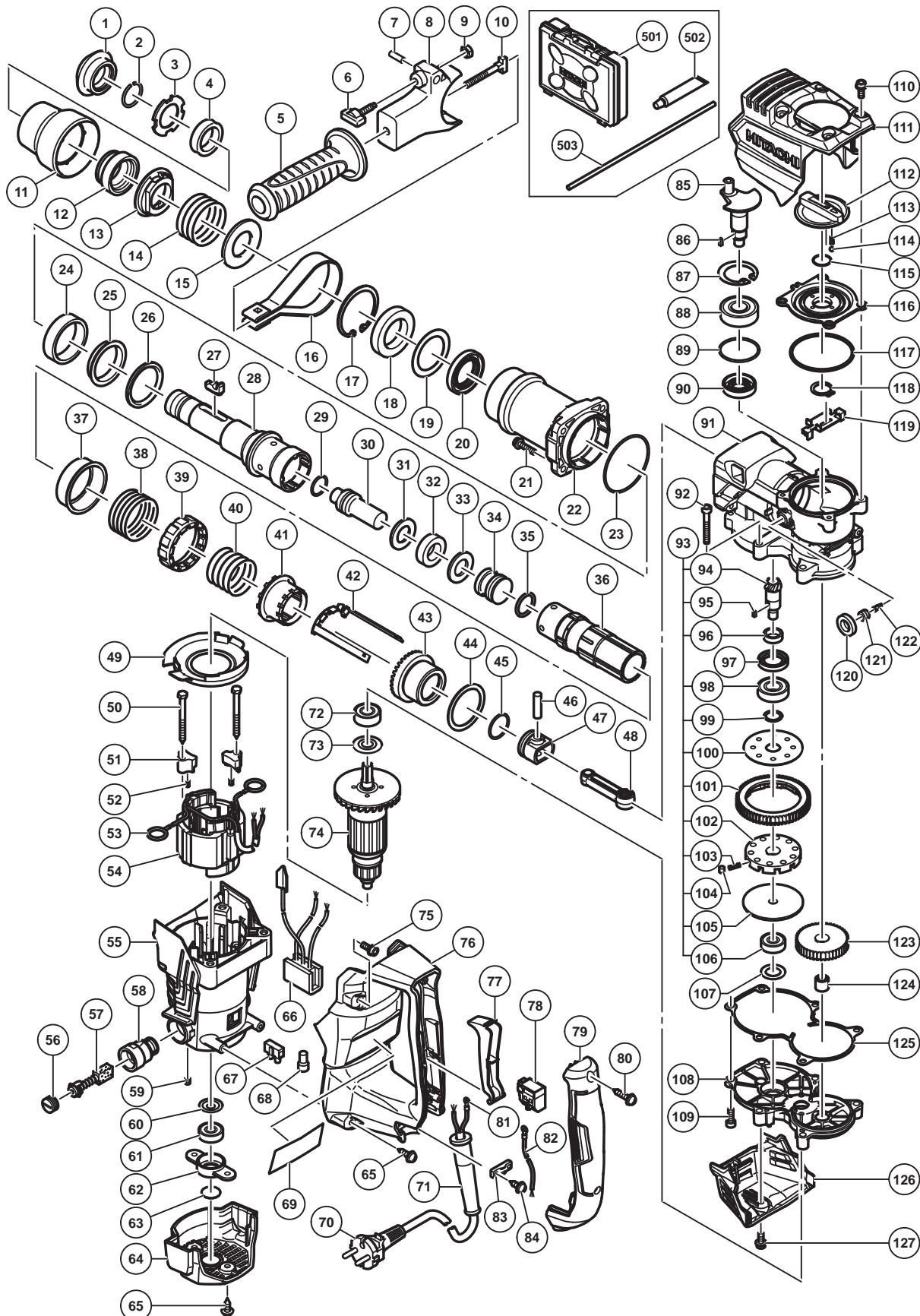


ELECTRIC TOOL PARTS LIST

■ ROTARY HAMMER Model DH 40MC

2016-12-7
(E1)



PARTS

DH 40MC

ITEM NO.	CODE NO.	DESCRIPTION	NO. USED	REMARKS
1	371151	FRONT CAP	1	
2	331540	STOPPER RING	1	
3	371138	RETAINER WASHER	1	
4	371152	RETAINER DAMPER (A)	1	
5	330209	SIDE HANDLE	1	
6	337577	WING BOLT	1	
7	949859	ROLL PIN D2 X 8 (10 PCS.)	1	
8	371135	MOUNT	1	
9	949556	NUT M6 (10 PCS.)	1	
10	331247	HANDLE BOLT	1	
11	371133	GRIP	1	
12	371157	BIT LOCK HOLDER	1	
13	371159	THRUST PLATE	1	
14	371167	RETAINER SPRING	1	
15	371145	SPRING HOLDER (A)	1	
16	331246	BAND	1	
17	371141	RETAINING RING D55	1	
18	6907DD	BALL BEARING 6907DDU	1	
19	371142	BEARING WASHER	1	
20	371148	OIL SEAL	1	
21	991712	HEX. SOCKET HD. BOLT (W/FLANGE) M6 X 25	4	
22	371125	CYLINDER CASE	1	
23	956996	O-RING (1AS-60)	1	
24	371153	RETAINER DAMPER (B)	1	
25	371144	DAMPER SLEEVE	1	
26	371161	RETAINER DAMPER WASHER	1	
27	370654	BIT LOCK	2	
28	371155	RETAINER SLEEVE	1	
29	313396	O-RING (C)	1	
30	371160	SECOND HAMMER	1	
31	371163	DAMPER WASHER	1	
32	371316	DAMPER	1	
33	371164	DAMPER HOLDER	1	
34	371165	STRIKER	1	
35	986104	O-RING	1	
36	371156	CYLINDER	1	
37	331533	SPRING HOLDER (B)	1	
38	331534	LOCK SPRING	1	
39	331535	LOCK SLEEVE	1	
40	371166	CLUTCH SPRING	1	
41	371137	CLUTCH	1	
42	371147	SLIDER	1	
43	371158	BEVEL GEAR	1	
44	331234	THRUST WASHER	1	
45	986104	O-RING	1	
46	331221	PISTON PIN	1	
47	326369	PISTON	1	
48	371175	CONNECTING ROD	1	
49	371172	FAN GUIDE	1	
50	953174	HEX. HD. TAPPING SCREW D5 X 55	2	

PARTS

DH 40MC

ITEM NO.	CODE NO.	DESCRIPTION	NO. USED	REMARKS
51	371123	STATOR HOLDER	2	
52	338755	RUBBER BUSH	2	
53	930703	BRUSH TERMINAL	2	
* 54	340963C	STATOR ASS'Y 110V	1	INCLUD.53
* 54	340963D	STATOR ASS'Y 120V	1	INCLUD.53
* 54	340963K	STATOR ASS'Y 127V	1	INCLUD.53
* 54	340963M	STATOR ASS'Y 220V	1	INCLUD.53
* 54	340963L	STATOR ASS'Y 220V	1	INCLUD.53 FOR CHN
* 54	340963E	STATOR ASS'Y 230V	1	INCLUD.53
* 54	340963H	STATOR ASS'Y 230V	1	INCLUD.53 FOR SIN,IND
* 54	340963F	STATOR ASS'Y 240V	1	INCLUD.53
* 54	340963J	STATOR ASS'Y 240V	1	INCLUD.53 FOR MAL
55	371174	HOUSING ASS'Y	1	INCLUD.58,59
56	945161	BRUSH CAP	2	
57	999043	CARBON BRUSH (1 PAIR)	1	
57	999073	CARBON BRUSH (AUTO STOP TYPE) (1 PAIR)	1	
58	958900	BRUSH HOLDER	2	
59	938477	HEX. SOCKET SET SCREW M5 X 8	2	
60	958915	WASHER (A)	1	
61	629VVM	BALL BEARING 629VV	1	
62	371139	BEARING HOLDER	1	
63	331547	DUST SEAL	1	
64	371127	TAIL COVER	1	
65	302089	TAPPING SCREW (W/FLANGE) D5 X 20 (BLACK)	4	
* 66	371177	NOISE SUPPRESSOR (V)	1	FOR EUROPE,GBR,AUS,NZL,SAF,RUS,TUR,CHN
* 67	938307	PILLAR TERMINAL	1	EXCEPT FOR THA,INA,SIN,MAL,IND,PAN (220V)
* 68	959141	CONNECTOR 50092 (10 PCS.)	1	
* 68	959141	CONNECTOR 50092 (10 PCS.)	2	FOR THA,INA,SIN,MAL,IND,PAN (220V)
69		NAME PLATE	1	
* 70	500390Z	CORD	1	(CORD ARMOR D8.2)
* 70	500434Z	CORD	1	(CORD ARMOR D8.2) FOR USA,CAN, MEX,PAN (120V)
* 70	500235Z	CORD	1	(CORD ARMOR D8.2) FOR INA,IND,PAN (220V)
* 70	500439Z	CORD	1	(CORD ARMOR D8.2) FOR AUS,NZL
* 70	500440Z	CORD	1	(CORD ARMOR D8.2) FOR SIN,MAL
* 70	500446Z	CORD	1	(CORD ARMOR D8.2) FOR GBR (230V)
* 70	500467Z	CORD	1	(CORD ARMOR D10.7) FOR GBR (110V)
* 70	500457Z	CORD	1	(CORD ARMOR D10.7) FOR CHN
* 70	500239Z	CORD	1	(CORD ARMOR D10.7) FOR THA
* 71	940778	CORD ARMOR D10.7	1	
* 71	958049	CORD ARMOR D8.2	1	
72	6201DD	BALL BEARING 6201DDCMPS2L	1	
73	325003	DUST WASHER (B)	1	
* 74	361058C	ARMATURE 110V	1	
* 74	361058U	ARMATURE ASS'Y 120V	1	INCLUD.60,61,72,73
* 74	361058G	ARMATURE 127V	1	
* 74	361058H	ARMATURE 220V	1	
* 74	361058E	ARMATURE 230V	1	
* 74	361058F	ARMATURE 240V	1	
75	994192	HEX. SOCKET HD. BOLT (W/FLANGE) M5 X 16	2	

PARTS

DH 40MC

ITEM NO.	CODE NO.	DESCRIPTION	NO. USED	REMARKS
76	371129	HANDLE	1	
77	371128	TRIGGER	1	
78	371171	SWITCH	1	
79	371130	HANDLE COVER	1	
80	307028	TAPPING SCREW (W/FLANGE) D4 X 25 (BLACK)	2	
* 81	980063	TERMINAL	1	
* 81	930804	TERMINAL M4.0 (10 PCS.)	1	FOR USA,CAN,MEX,PAN (120V),GBR (110V)
82	371149	INTERNAL WIRE	1	
83	960266	CORD CLIP	1	
84	984750	TAPPING SCREW (W/FLANGE) D4 X 16	2	
85	371136	CRANK SHAFT	1	
86	944109	FEATHER KEY 3 X 3 X 8	1	
87	948391	RETAINING RING FOR D40 HOLE	1	
88	6203DD	BALL BEARING 6203DDCMPS2L	1	
89	996363	O-RING (S-40)	1	
90	321274	OIL SEAL (B)	1	
91	371173	CRANK CASE ASS'Y	1	INCLUD.121,122
92	986940	SEAL LOCK HEX. SOCKET HD. BOLT M6 X 45	4	
93	371176	SLIP CLUTCH ASS'Y	1	INCLUD.94-96,98-106
94	331211	BEVEL PINION	1	
95	944109	FEATHER KEY 3 X 3 X 8	1	
96	321279	COLLAR	1	
97	313050	OIL SEAL (A)	1	
98	6002DD	BALL BEARING 6002DDCMPS2L	1	
99	331213	WASHER	1	
100	331214	WASHER (A)	1	
101	331215	SECOND GEAR	1	
102	321281	GEAR HOLDER	1	
103	321282	SPRING (C)	10	
104	331217	NEEDLE	10	
105	331219	SPACER	1	
106	629VVM	BALL BEARING 629VV	1	
107	331220	BEARING WASHER (C)	1	
108	371124	GEAR COVER	1	
109	992803	SEAL LOCK HEX. SOCKET HD. BOLT M6 X 20	2	
110	371170	HEX. SOCKET HD. BOLT (W/FLANGE) M5	4	
111	371131	CRANK COVER	1	
112	371134	CHANGE LEVER	1	
113	371168	LEVER SPRING	1	
114	959149	STEEL BALL D4.76 (10 PCS.)	1	
115	878885	O-RING (S-18)	1	
116	371126	LEVER SHAFT HOLDER	1	
117	877315	CYLINDER O-RING (I.D 63.9)	1	
118	939547	RETAINING RING FOR D20 SHAFT (10 PCS.)	1	
119	371146	CHANGE PLATE	1	
120	371178	FELT PACKING (A)	1	
121	371179	CAP SCREW	1	
122	995396	VALVE	1	
123	371162	FIRST GEAR	1	
124	371169	NEEDLE BEARING	1	

PARTS

DH 40MC

ITEM NO.	CODE NO.	DESCRIPTION	NO. USED	REMARKS
125	371143	SEAL PACKING	1	
126	371132	HOOD	1	
127	998471	HEX. SOCKET HD. BOLT (W/FLANGE) M5 X 12	1	

STANDARD ACCESSORIES

ITEM NO.	CODE NO.	DESCRIPTION	NO. USED	REMARKS
501	371122	CASE	1	
502	981840	GREASE (A) FOR HAMMER.HAMMER DRILL (30G)	1	
503	971786	STOPPER ROD	1	