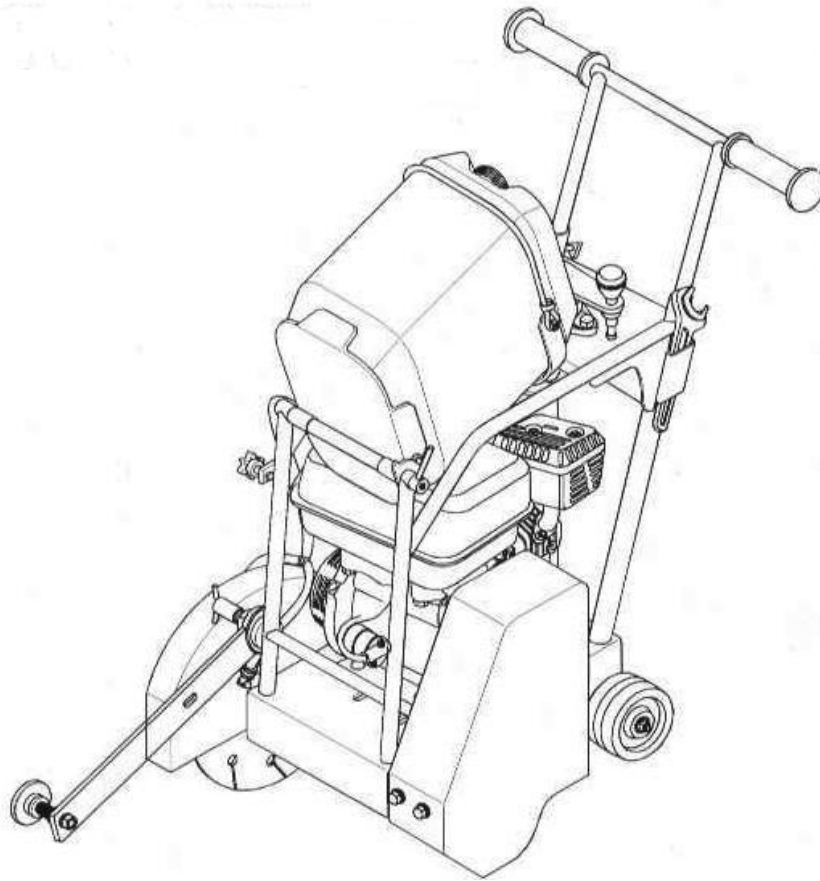


ASPHALT AND CONCRETE CUTTERS



Instructions for spare parts ordering

This catalogue contains specifications of the spare parts and their arrangement in the assembly groups. The catalogue is arranged so that every text page is followed with the respective illustrated page. The text includes the following.

- Number of group and exact denomination of group
- Position
- Denomination of part
- Number of pieces used

When ordering spare parts always state :

- Type of machine
- Serial number of machine
- Number of group and exact denomination of group
- Position
- Exact denomination of part
- Quantity

Example : Type of machine : RZ 120
Serial number : 035
Group : 5. Control

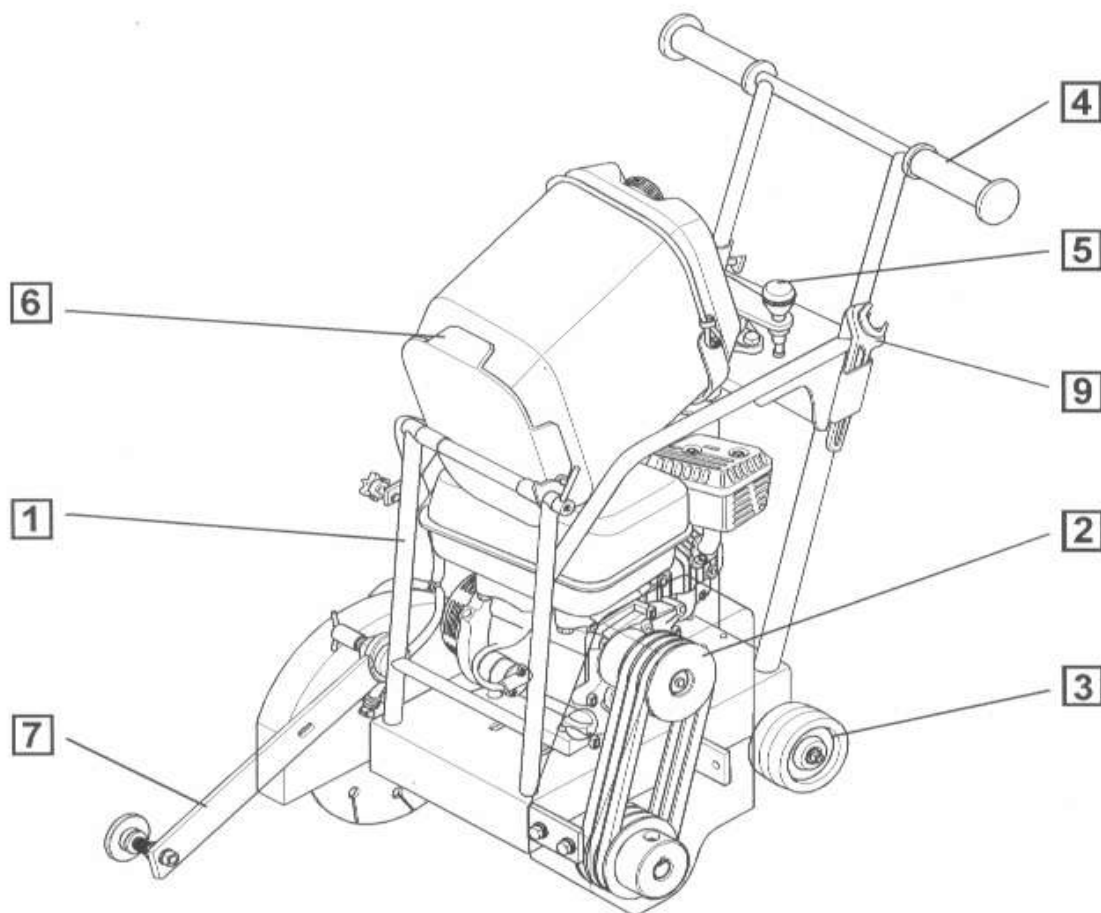
Position:	Exact denomination of part :	Quantity:
2	Lever	1
9	Bolt M12x40	2

Send your order to : NTC STAVEBNÍ TECHNIKA spol. s r.o. Phone: +420-491401601
Maloskalická 120 Fax: +420-491401609
552 03 Česká Skalice E-mail: ntc@ntc.cz
Czech republic

Data in this catalogue comply with the knowledge available on the date of issue. Subject to technical modifications.

ASPHALT AND CONCRETE CUTTER

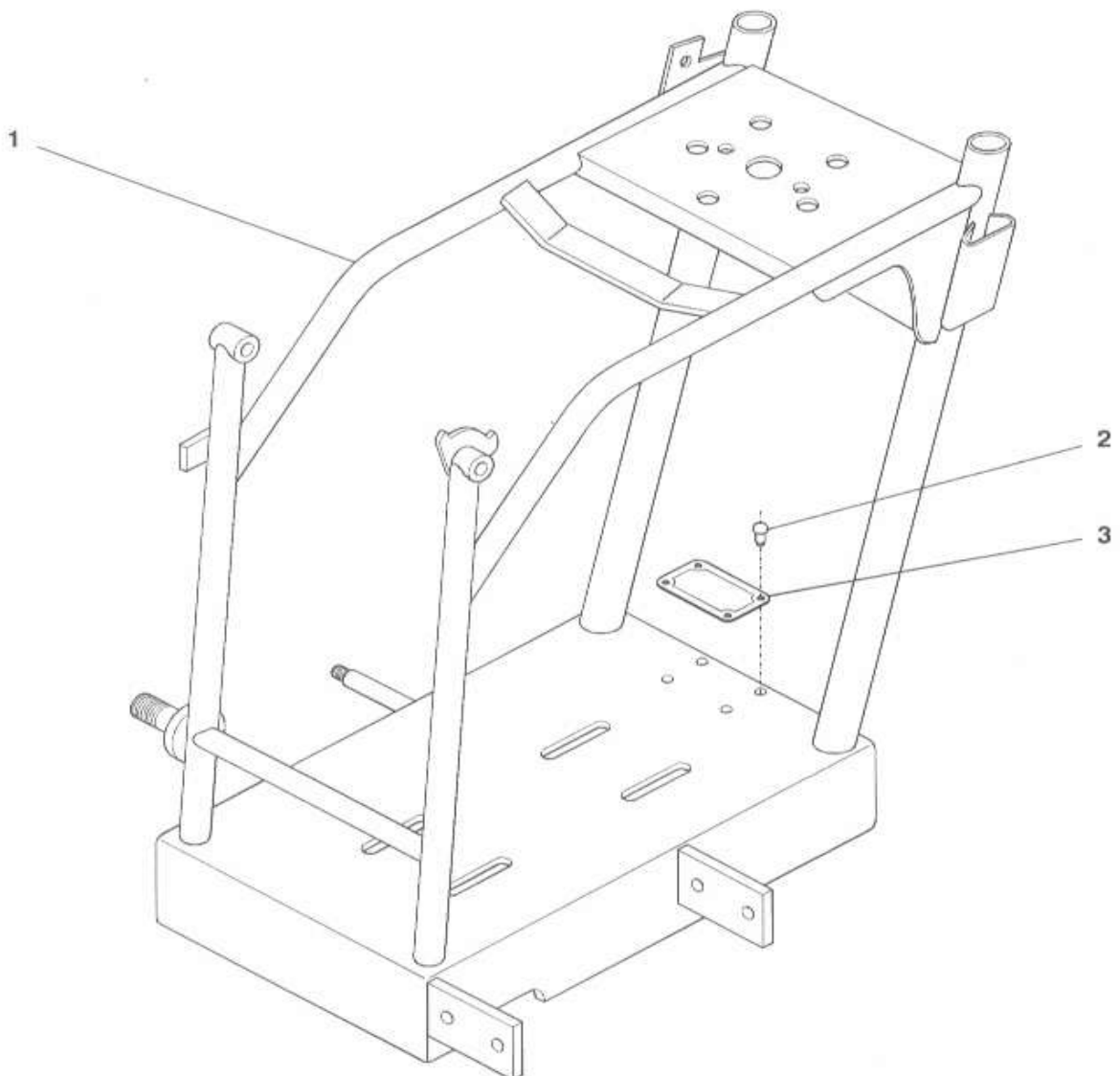
Number of group	Exact denomination of group	Pieces used	Page
1	Frame	1	3
2	Drive	1	4
3	Undercarriage	1	7
4	Handlebars	1	9
5	Control	1	10
6	Cooling	1	12
7	Guide	1	14
9	Accessory	1	15



RZ 120
RZ 170

1. FRAME

Position	Exact denomination of part	Pieces used			
1	Frame	1	30057A		
2	Rivet 3x8	4			
3	Rating plate	1	3010010001		



RZ 120

RZ 170

2. DRIVE

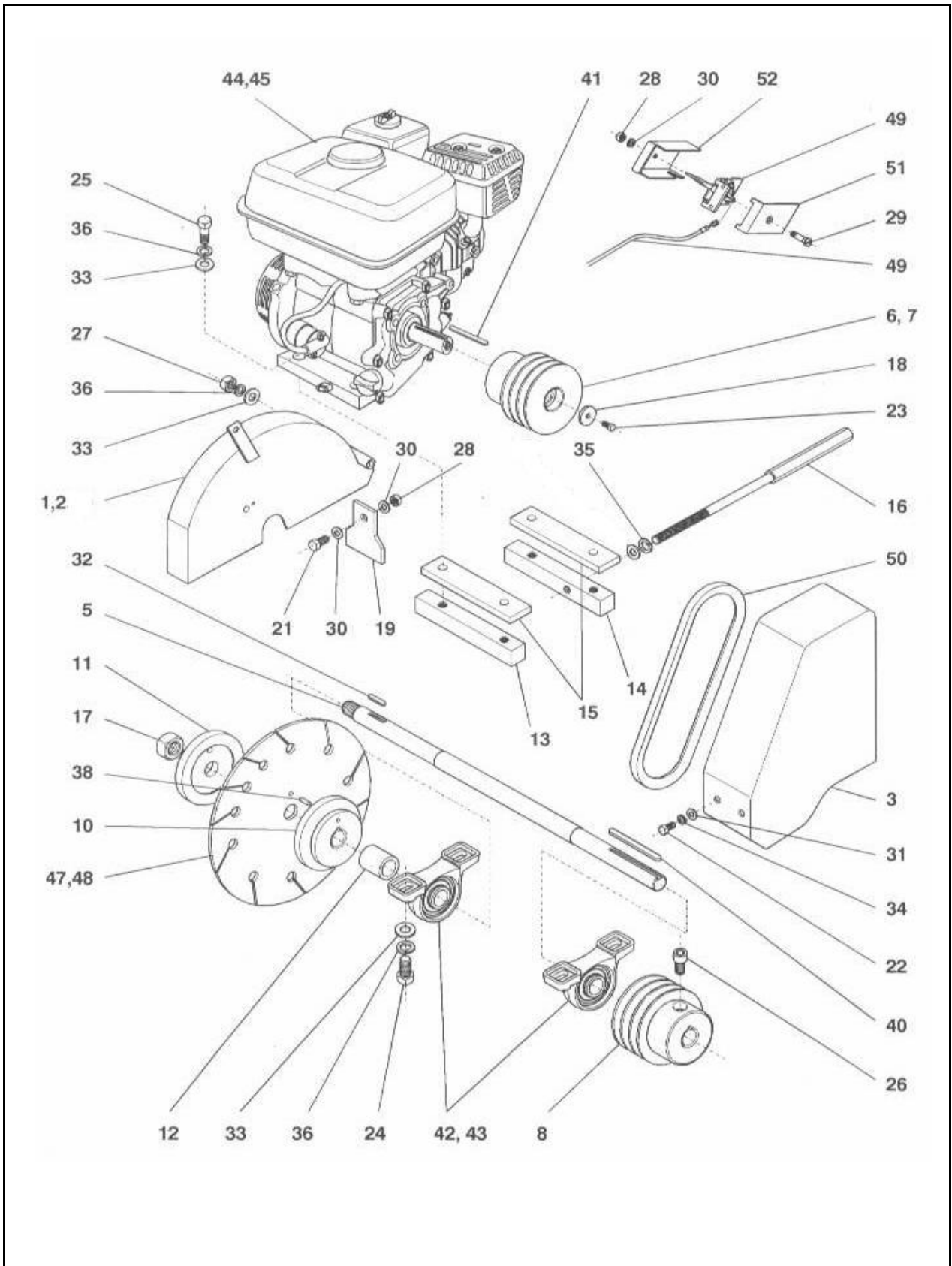
Position	Exact denomination of part	Pieces used	Sklad č.		
1	protectice cover 400 / RZ 120	1	30249A		
2	Protectice cover 450 / RZ 170	1	30067A		
3	Belt pulley guard	1	30085A 30086A	RZ 120 RZ 170	
5	Shaft	1	40160A		
6	Belt pulley I. RZ 120	1	2270000532		
	Taper Lock	1	2270000534		
7-1	Belt pulley I. RZ 170	1	2270000530		
	Taper Lock	1	2270000535		
7-2	Belt pulley RZ 170	1	40162C		
8	Belt pulley II.	1	2270000533		
	Taper Lock	1	2270000534		
10	Flange I.	1	40164A		
11	Flange II.	1	40165A		
12	Bush	1	40166A		
13	Cube	2	40167A		
14	Cube II. (by March 2005)	1	40168A		
15	Engine shim (by March 2005)	2	40169A		
16	Tightening screw (by March 2005)	1	40170A		
17	Nut	1	40171A		
18	Washer (by April 2004)	1	40172A		
19	Orifice plate	1	40173A		
21	Bolt M6x12	1			
22	Bolt M8x10	4			
23	Bolt M8x25	1			
24	Bolt M12x40	4			
25	Bolt M10x45	4			

RZ 120

RZ 170

2. DRIVE

Position	Exact denomination of part	Pieces used	Sklad č.		
26	Bolt M6x16 (by April 2004)	1			
27	Nut M12	1			
28	Nut M6 (to March 2002)	2			
29	Bolt M6x30 (by March 2002)	1			
30	Washer 6,4 (by March 2002)	3			
31	Washer 10,5	4			
32	Feather 8x7x15	1	2256287725		
33	Washer 13	9			
34	Washer 12	4			
35	Washer 10	1			
36	Washer 12	9			
38	Pin 10x32	1	3120010011		
40	Feather 8x7x60	1	2256287760		
41	Feather 7x7x50	1	součást motoru		
42	Bearing	2	3110000206		
43	Grease nipple M8x1	1	3742100601		
44	Honda engine GX 270	1	3120010032		
45	Honda engine GX 390	1	3120010033		
47	Disc Ø350	1			
48	Disc Ø450	1			
49	Controller (by March 2002)	1	3120010009 3509000000 3509000002	Páka plynu Struna Bovden	
50	V belt	3	4080000775 4080000750	RZ 120 RZ 170	
51	Cover I. (by March 2002)	1	40040A		
52	Cover II. (by March 2002)	1	40041A		

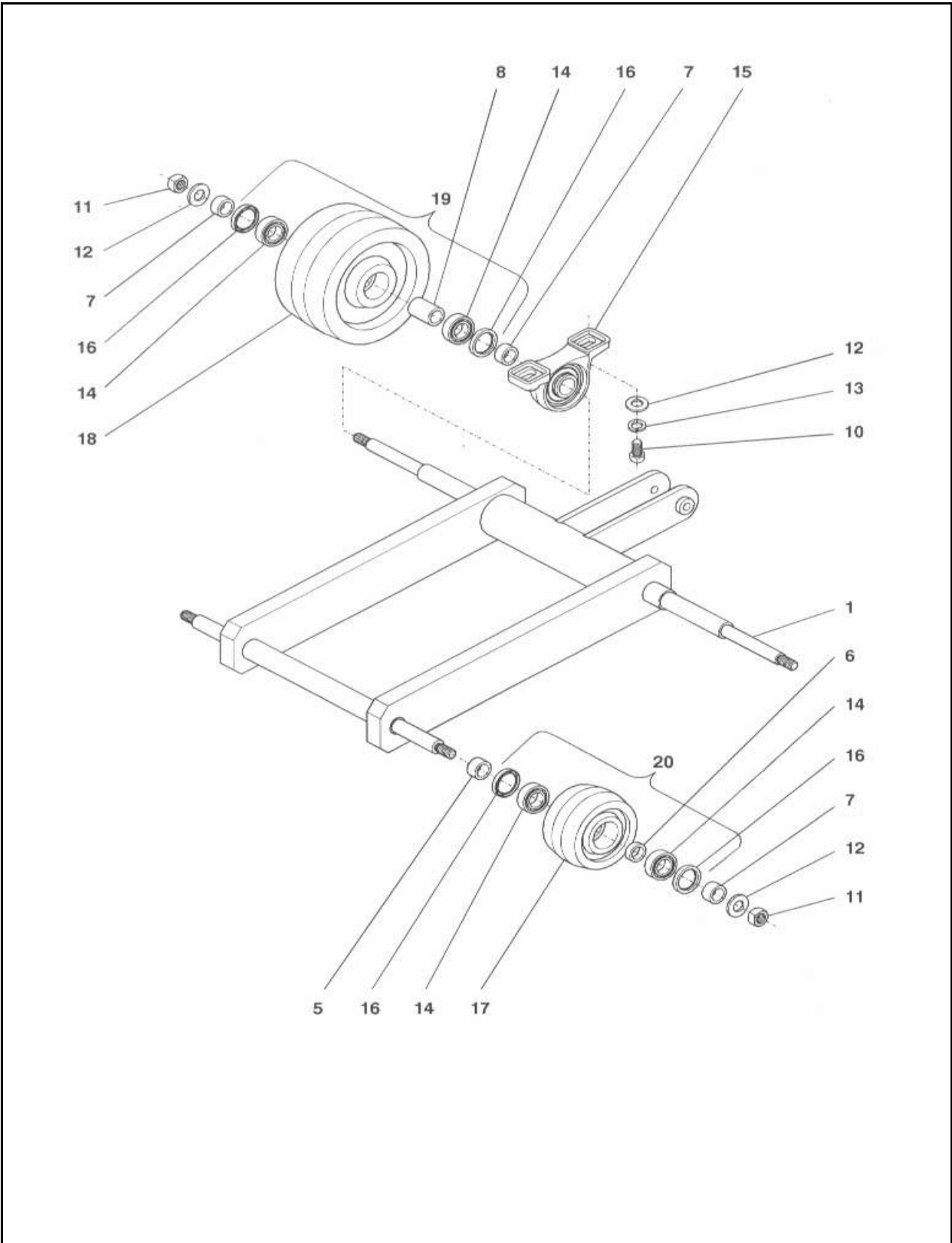


3. UNDERCARRIAGE

RZ 120

RZ 170

Position	Exact denomination of part	Pieces used	Sklad č.		
1	Frame	1	30074A		
5	Distance bush	2	40358A		
6	Distance bush	2	40359A		
7	Distance bush	6	40360A		
8	Distance bush	2	40361A		
10	Bolt M12x35	4			
11	Nut M12	4			
12	Washer 13	8			
13	Washer 12	4			
14	Bearing	8	3110006003		
15	Bearing	2	3110000204		
16	Oil seal	8	4102503507		
17	Wheel	2	3180180203		
18	Wheel	2	3180180204		
19	Wheel complete Ø170	2	30073B		
20	Wheel complete Ø100	2	30073C		
	M10x40	1	4260045210		
	maticí	1	40273A		

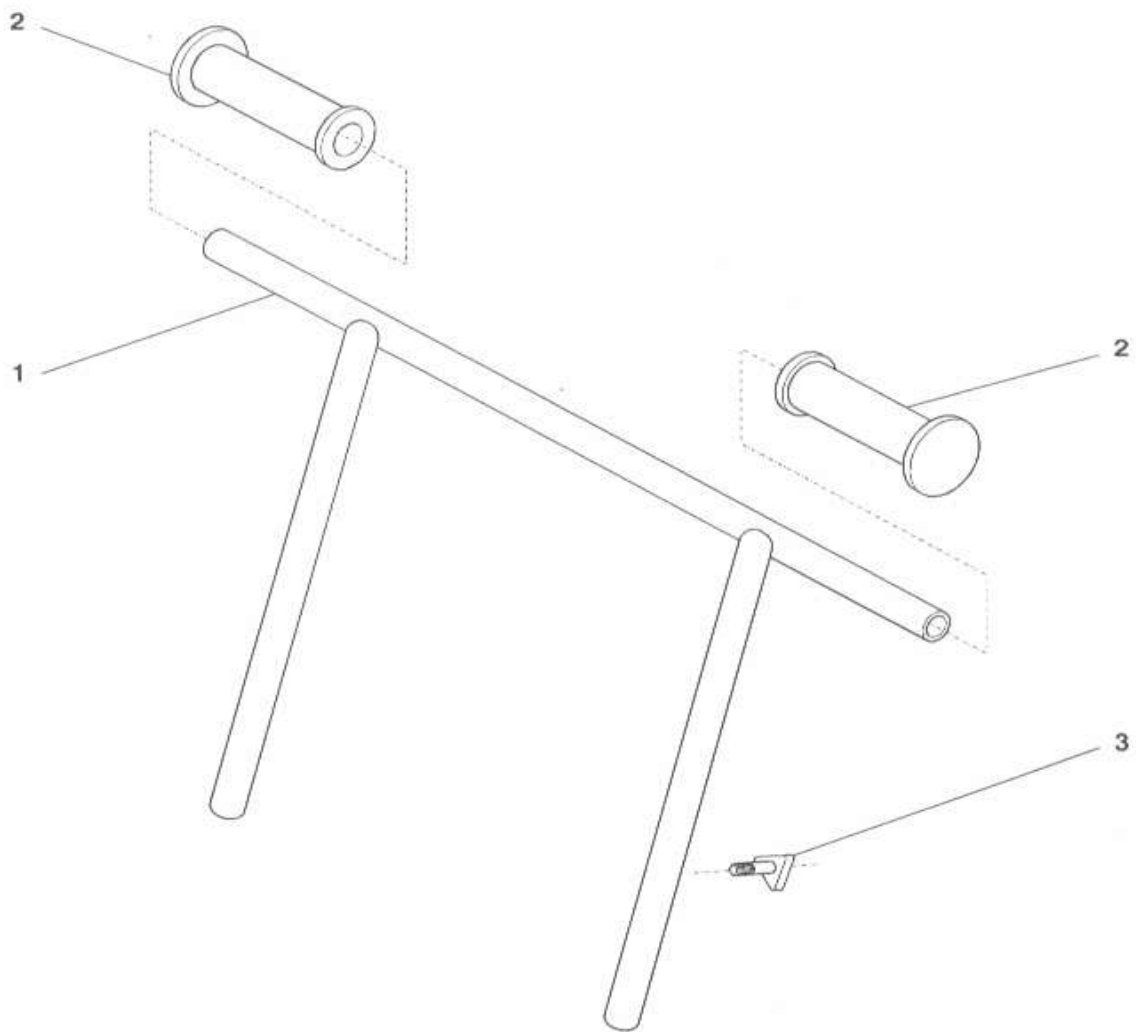


4. HANDLEBARS

RZ 120

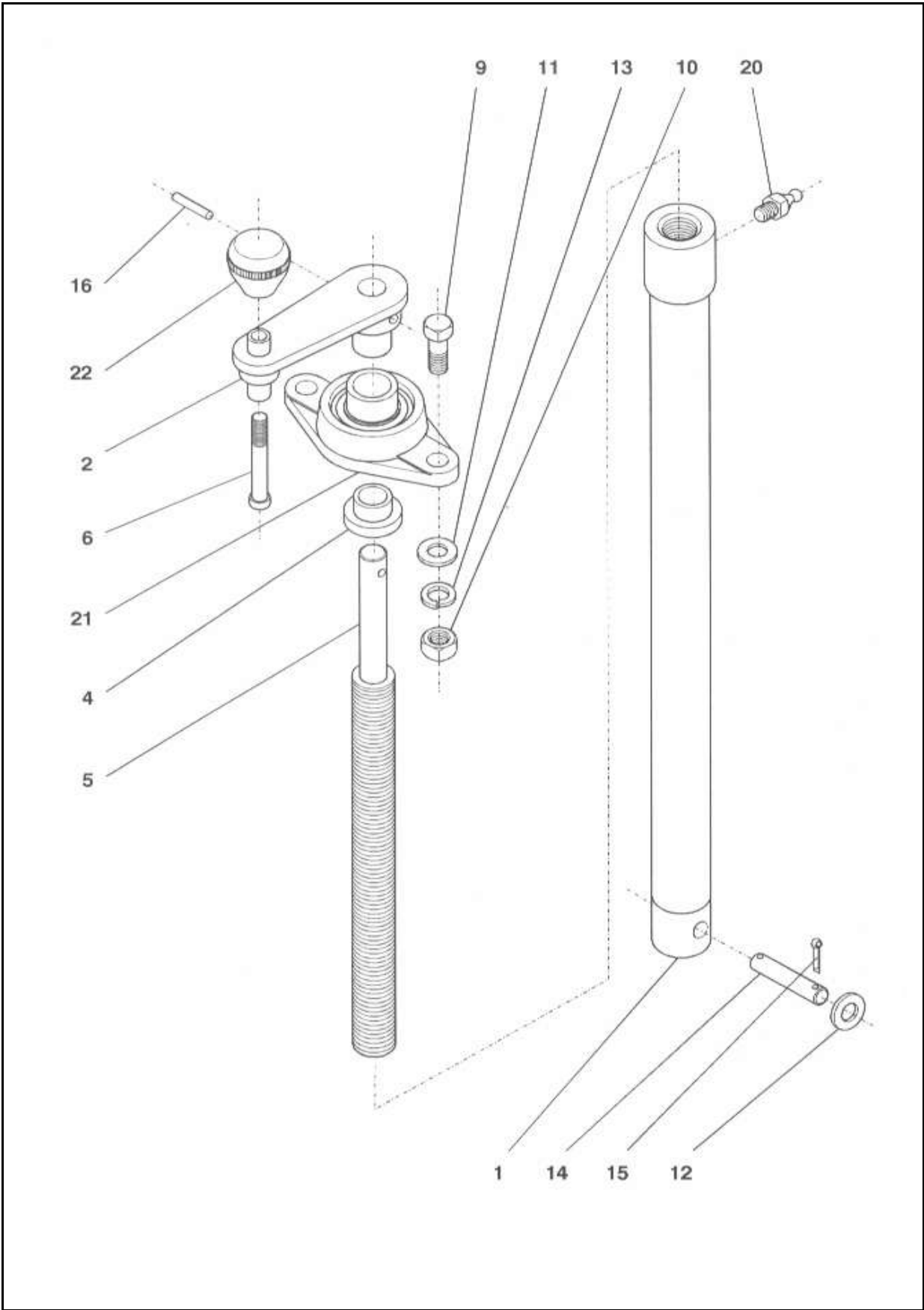
RZ 170

Position	Exact denomination of part	Pieces used			
1	Handlebars	1	30076A		
2	Handle	2	4014014013		
3	Bolt	2	4260000210		



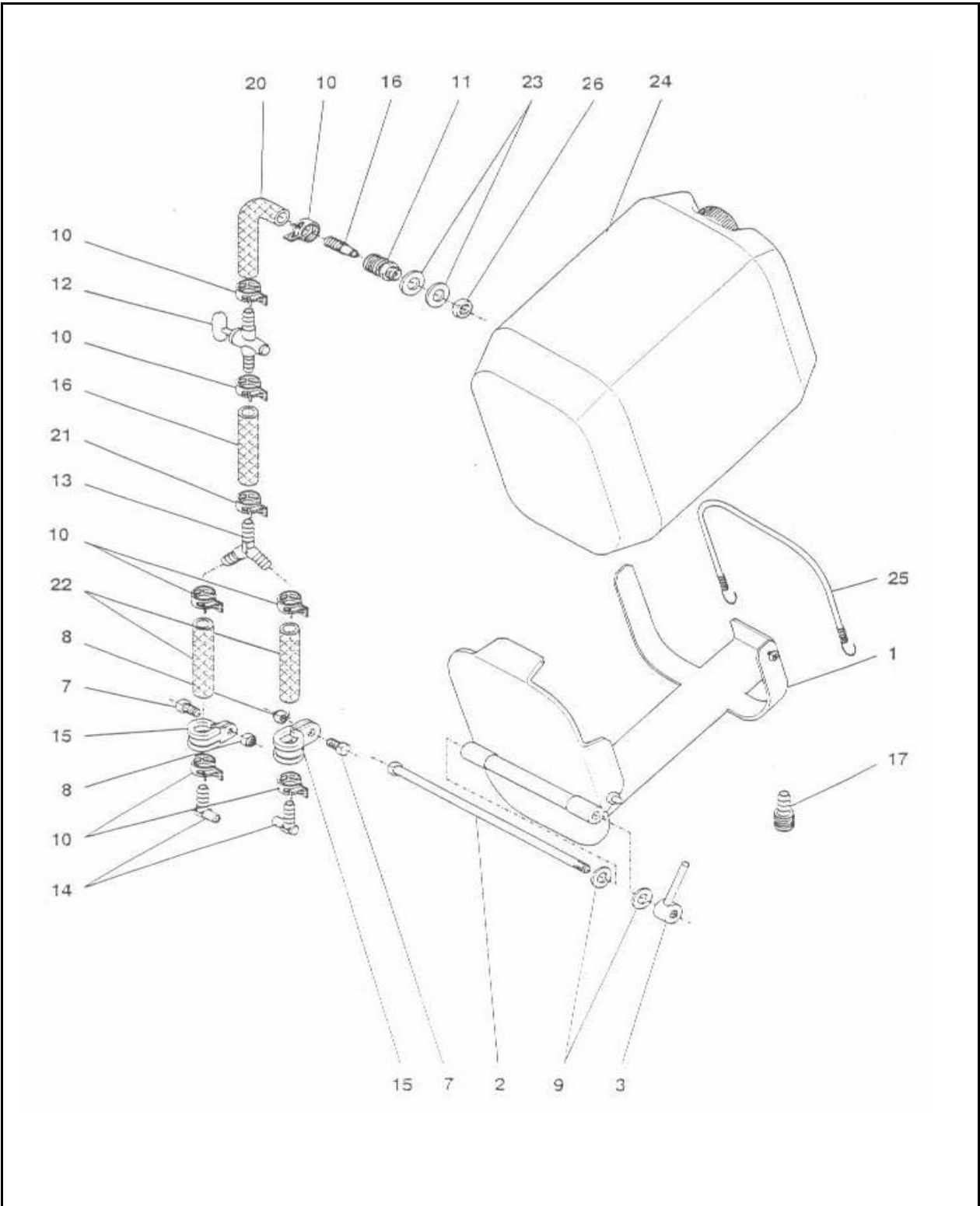
CONTROL**RZ 120****RZ 170**

Position	Exact denomination of part	Pieces used			
0	Cutting depth control	1	30077A		
1	Pipe	1	40183A 40183B	RZ 120 RZ 170	
2	Lever	1	40188A		
4	Bush	1	40354A		
5	Bolt	1	40192A		
6	Bolt M10x80	1			
9	Bolt M10x35	2			
	Bolt M10x40	2			
10	Nut M10	4			
11	Washer 10,5	6			
12	Washer 10,5	2			
13	Washer 10	2			
14	Pin	1	40982A		
15	Split pin 3,2x25	2			
16	Pin 6x30	1	2148106030		
20	Grease nipple M8x1	1	3742100801		
21	Bearing	1	3110000207		
22	Handle	1	4260004010		
	Control cable	1	40255AA		



6. COOLING**RZ 120****RZ 170**

Position	Exact denomination of part	Pieces used			
1	Canister holder	1	30079A		
2	Bolt	1	40199A		
3	Nut	1	40201A		
7	Bolt M6x12	1			
8	Nut M6	1			
9	Washer 12,5	1			
10	Sleeve (by July 2001)	8			
11	Fast coupling 1/2"	1	3815232003		
12	Cock 1/2"	1	4014435001		
13	Breeches piece YS 14	1	4014014011		
14	Elbow with nozzle	2	40213AA		
15	Tube clip	1	3651002015		
16	Connection piece 1/2"	1	3815232503		
17	Fast coupling 1/2"	1	3815232003		
20	Hose 1/2"- 270	1	4016001401		
21	Hose 1/2"- 170	1	4016001401		
22	Hose 1/2"- 300	2	4016001401		
23	Washer	2	600040412A		
24	Canister with fast coupling	1	30078B		
25	Fastening belt	1	30078D		
26	Nut 1/2"	1	40413A		
	(poz.7,8,9,11,12,13,14,15,16,20,21,22,26)	1	30118A		

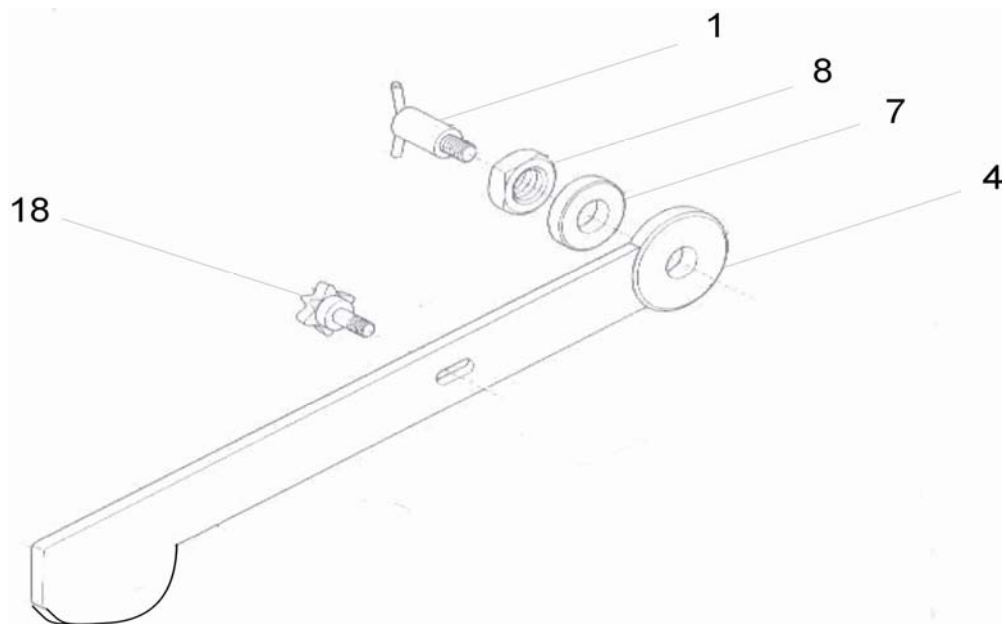


7. GUIDE

RZ 120

RZ 170

Position	Exact denomination of part	Pieces used			
1	Bolt	1	40206A		
	Washer 12	1			
4	Arm	1	40204A		
5	Roller (by October 2000)	1			
6	Washer I. (by October 2000)	2			
7	Washer II.	1	40211A		
8	Nut	1	40212A		
12	Bolt M10x80 (by October 2000)	1			
13	Nut M10 (by October 2000)	3			
14	Washer 10,5 (by October 2000)	3			
17	Spring (by October 2000)	1			
18	Bolt M8x20	1	4260000208		
	Washer 8	1			
	Washer 8,5	1			



9. ACCESSORY

RZ 120

RZ 170

Position	Exact denomination of part	Pieces used			
1	Spanner of flange	1	40275C		
2	Spanner	1	7640000036		
4	Spanner of sparking plug	1	40408A		
7	Connecting pipe	1	4014014018		
	Hose, length 0,5 m	1	4016001308		
8	Braided cord, length 1,5 m	1	4015000060		

